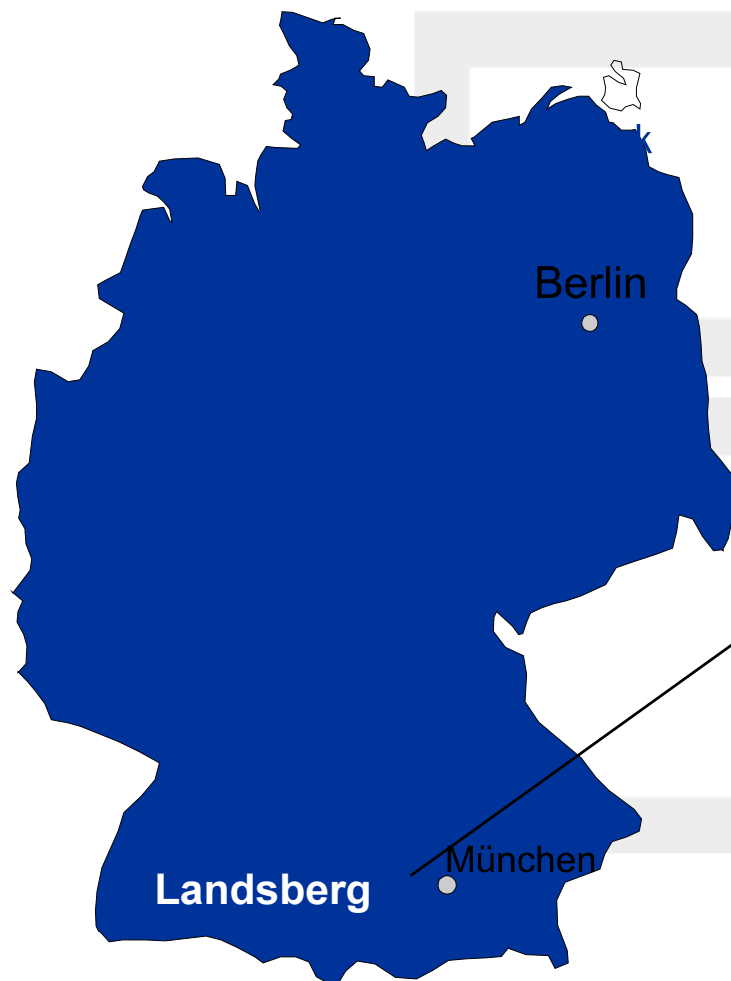




...Think along new lines



SCHÖNENBERGER
40 years experience and know-how
2500 systems worldwide

From Visions to Integral Performance

Designing your system..... together

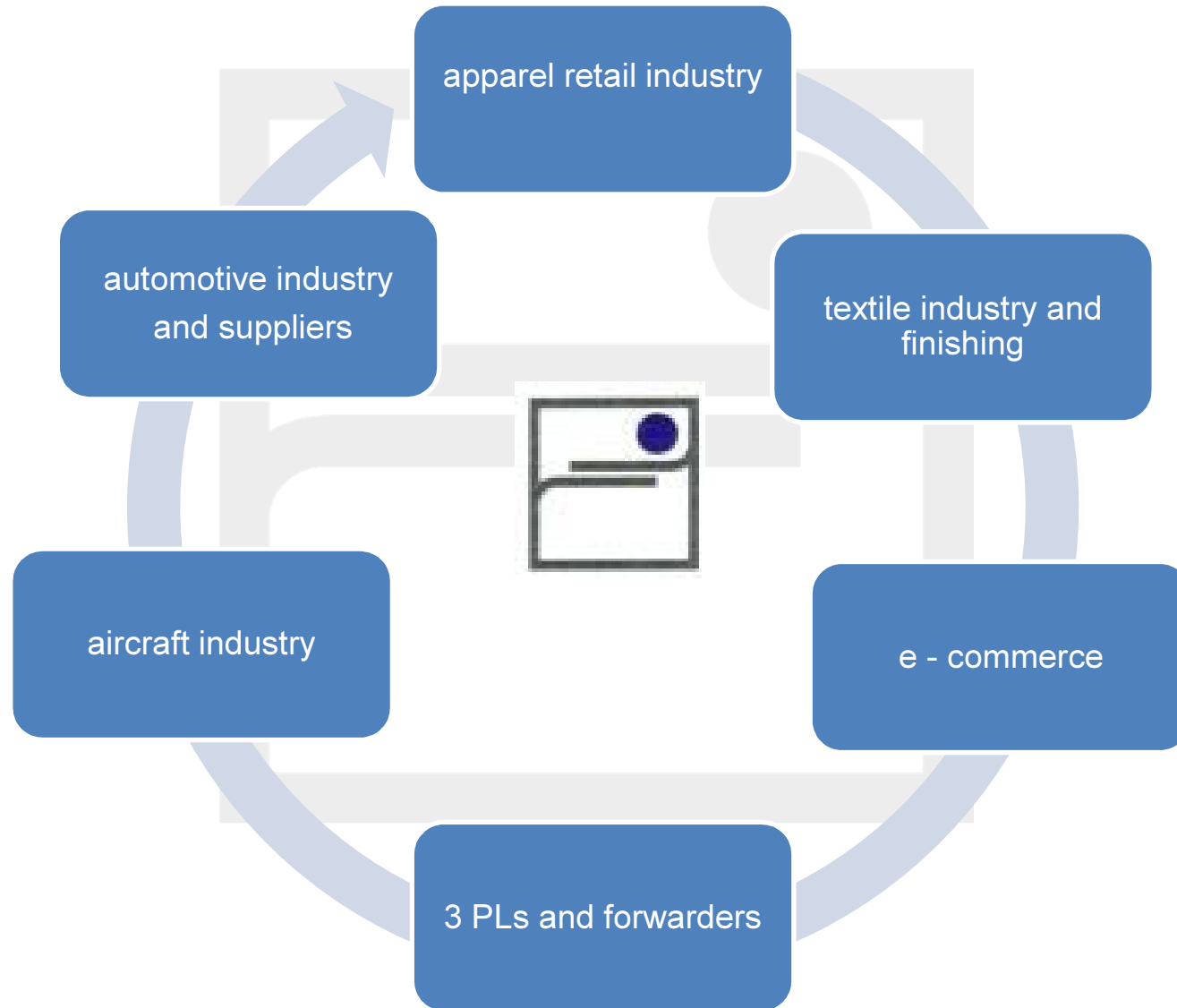
Together with you and the team appointed by you we analyse and discuss your logistic visions and with your success in mind we try to improve your existing organisation and thus help create your specific logistic and material flow system for tomorrow`s demands

Following a thorough evaluation of `your `best suited logistic solution we prepare an Offer based on a product range of longlasting components integrating successfully employed solutions including customized amendments.

The SCHÖNENBERGER System originated on the factory floor and was further developed in ambitious dynamic businesses. Over the years it has turned into a valued tool for many Companies struggling to battle the daily challenges of operational routines. Sometimes it was even called the „ artery“ within the company.

`Live Time Performance

'Live Time Performance!'



For every application the right solution

service



leads to
'life time performance'



contract logistic



dynamic storage of hanging
and flat goods:
easy access to all merchandise



e-commerce



makes individual single orders
of every customer happen



e-log



event driven **log**istics
mass distribution for the unit 1



SCHÖNENBERGER *OMNIFLO* Trolley System



The SCHÖNENBERGER *OMNIFLO* system is a centrally supported rail system (derailing is impossible). The advantage of the central support is an unlimited combination of tracks going “left” and “right”; even a “turning” of trolleys or trolley trains is possible.

For a high throughput, groups of goods could go together to their destination; for uniform goods SCHÖNENBERGER recommends to transport material in train formations.

A major advantage of the SCHÖNENBERGER *OMNIFLO* system is, that any modification and/or enlargement can be easily realised. Experiences in the daily use of the system reflect the necessity for automation much better than any theoretical planning.

Modular and economical modification/upgrade of any section is possible without any change in organisational structures or trolleys.
SCHÖNENBERGER conveyors are reversible and can run bi-directional.

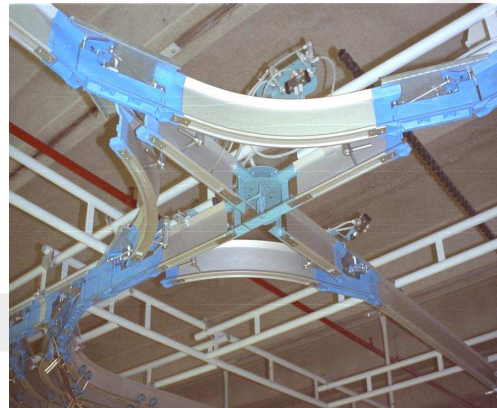
SCHÖNENBERGER OMNIFLO Trolley System centrally supported rail system



THE TROLLEY SYSTEM



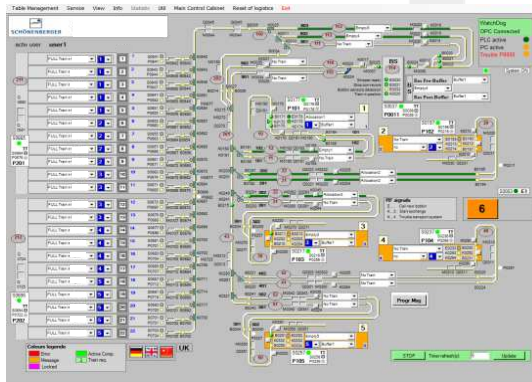
Aluminium-Rail-System



Switches – mechanic and automated



Trolley coupled to Trolley Trains



Automation / Controls



Chain Conveyor (up/down reversible)



TEF Conveyor with brushes

LTA50 Trolley for GOH

Load:

300 N (ca. 30 kg) total (incl. additional trapeze bar)
up to 35 pieces (depending on size of garments)

Accessories:

trapeze bar long: EBA 900
size tags
barcode or transponder as data carrier



Features:

- ✓ steel-reinforced, plastic, covered link bar
- ✓ manufactured of high-quality plastic
- ✓ rollers have ball bearings
- ✓ coupling mechanisms can be locked to stop accidental coupling
- ✓ Trolley bar can be used on either side simply by turning it round, i. e. smooth side for storage and ribbed side in pressing room to separate
- ✓ Trolley can be loaded automatically with SCHÖNENBERGER Loader-Robot
- ✓ Conveyable as single or coupled in train formation
- ✓ goods are held securely on slopes
- ✓ The trolleys with an approximate length of 540mm and a usable length of approx. 400mm

CTU Container Trolley for Flat Goods

Load:

1,000 N (ca. 100 kg) total

Accessories:

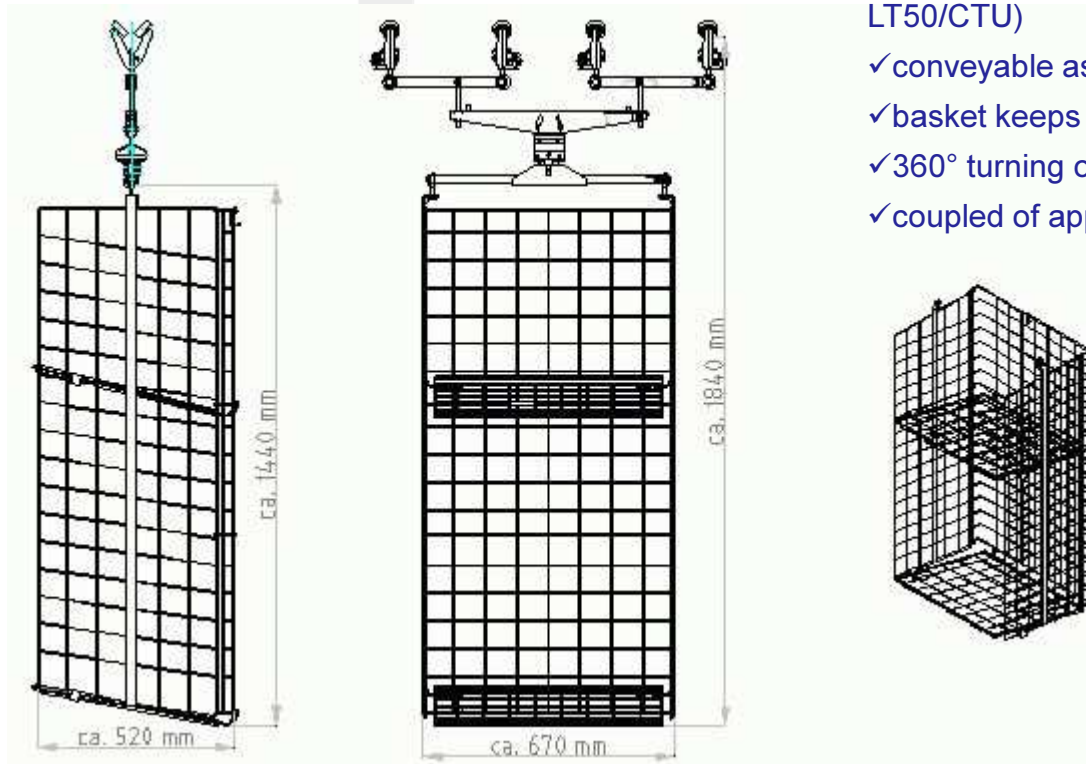
additional shelves

size tags

barcode or transponder as data carrier

Features:

- ✓ trolley V 30 / V60
- ✓ high quality manufacture
- ✓ rollers have ball bearings
- ✓ coupling mechanisms can be locked to stop accidental coupling
- ✓ coupling with trolley V30, V50, V60 (LTA 50, LT50/CTU)
- ✓ conveyable as single or coupled in train formation
- ✓ basket keeps level when conveyed along in-/decline
- ✓ 360° turning of basket in steps of 90°
- ✓ coupled of approx. 860mm



SCHÖNENBERGER System in Garment Production



Cutting and Fixing



Preparation Bundle / PO



Trousers Assembly



Assembly of Shirts



Jacket Assembly

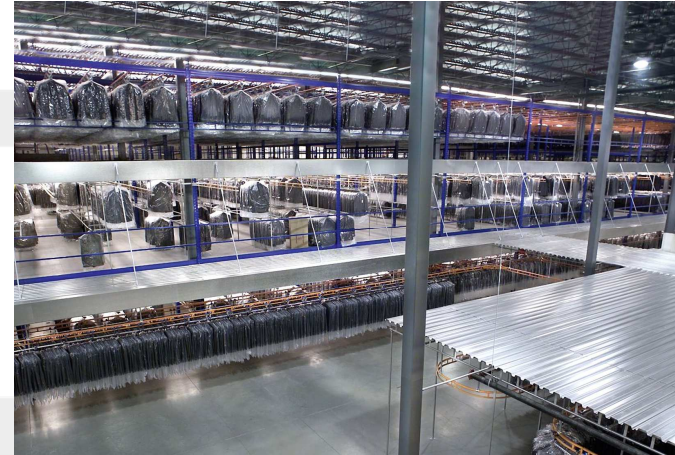


Finishing / Ironing In-Line

SCHÖNENBERGER Garments Warehouse Solutions



Multi level warehouses



for GOH



flat garments from racks



flat goods storage

SCHÖNENBERGER Industry Applications



retail order picking



seat covers



cockpits

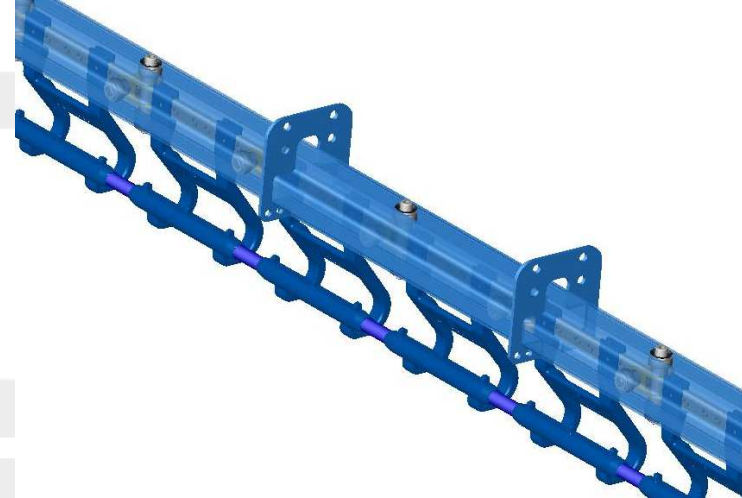


automotive suppliers



bumpers

SCHÖNENBERGER GOH conveyors and sorters



CDDC – continuous distribution and despatch conveyor



pin conveyor



clip conveyor



sorter

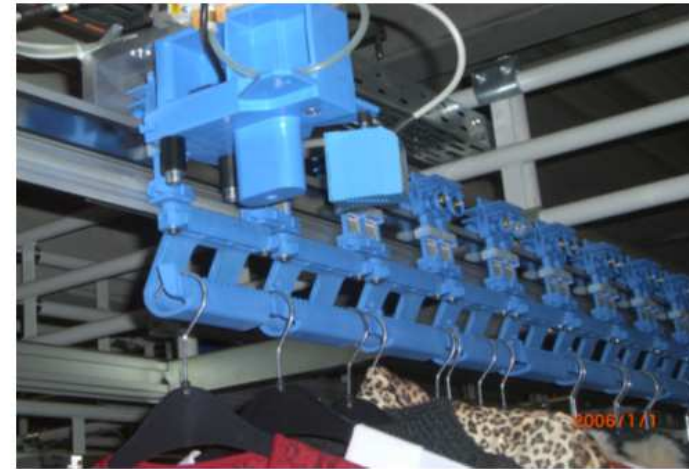
The new transporting system SCHÖNENBERGER System ILS 2100 can be used for many jobs and processes in internal material flow.

The main advantage of this system is to be found in regulation of procedures for the handling of specific applications, compact construction, optimal use of building volume, significant less manpower and ensured process stability.

The SCHÖNENBERGER Intra-Logistic-System *ILS 2100* guarantees quick and direct transport of hanging garments through the whole system. Packs or groups of garments can be transported and packed by Minitrolley (MT). Single garments are sorted on Single Carriers (SC).

The flexibility of the system also allows future changes in business requirements. Shifting proportions between quotas can be handled by either change of storage strategy or by change of carriers (long to short or contrary) with only few adjustments and modifications of the hardware.

SCHÖNENBERGER Intra-Logistic-System ILS 2100



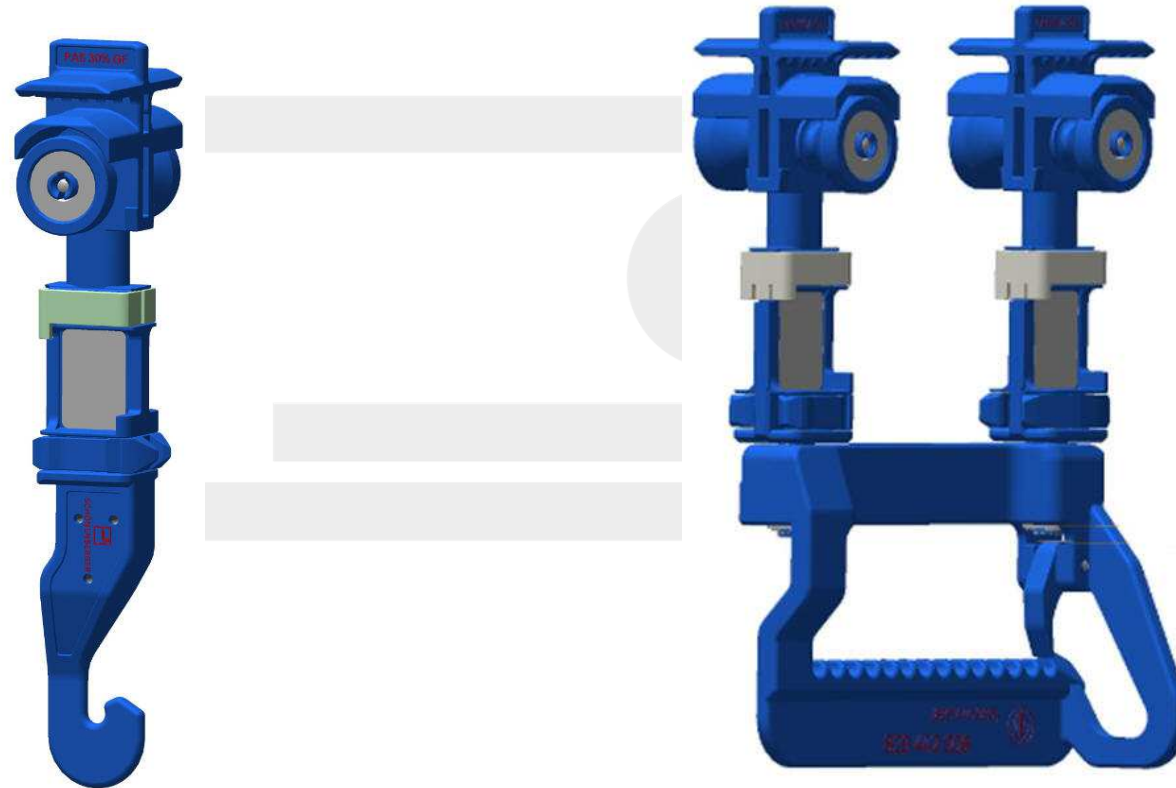
The Intra-Logistic-System SCHÖNENBERGER ILS 2100 has been developed to cover all functions within a distribution and logistic centre:

- receive and distribute new garments
- redistribute returned garments following 100% quality control
- process individual garments on Single Carriers (SC)
- create individual packs, load Minitrolleys (MT), bag and label for further processing
- retrieve from route storage in any wanted sequence: truck no., sequence of stops, packs sorted by departments, styles and shelves

ILS 2100 - Carriers



SCHÖNENBERGER



Single Carrier (SC)
for single hangers
transport of max. 7,200 SC / h

Minitrolley (MT)
for grouped goods (sets / units)
transport of max. 4,000 MT / h

ILS 2100 – Tray-Bag



loading

Tray-Bag
transport of max. 3,000 MT / h

unloading

Competence

We offer long-standing experience for a smooth planning, realisation and implementation of your challenging logistic projects.

Commitment

You will be received, helped and attended by our friendly, devoted and qualified team.

Quality

We deliver premium forward looking logistic system that will inspire you today and in the years to come.

Customers



Property Rights

Please accept that this document, all relating papers as well as sketches and layouts are mental property of SCHOENENBERGER Systeme GmbH - © 2015 by SCHOENENBERGER System GmbH.
Duplications, not authorised use or provision to 3rd parties are prohibited.