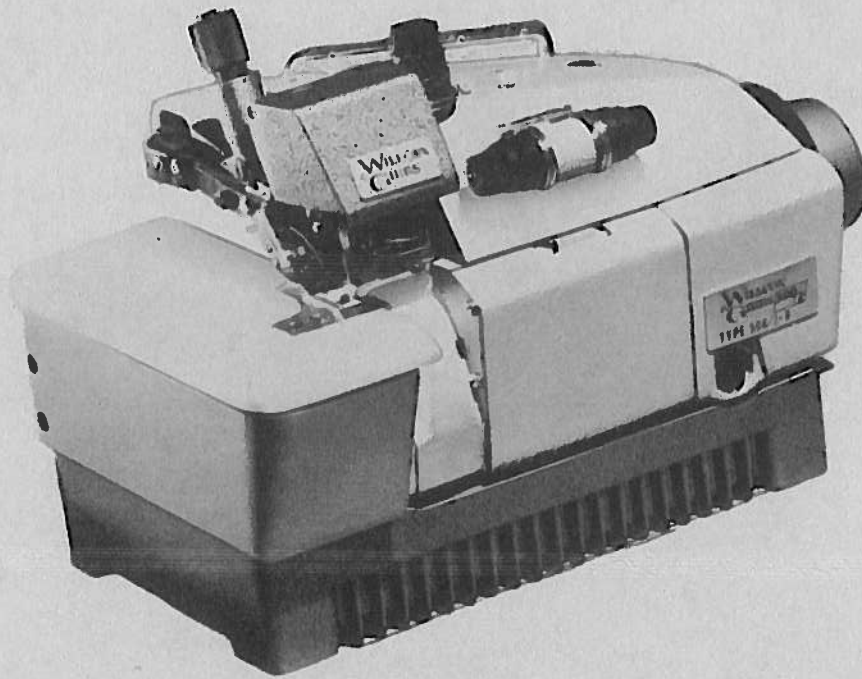




W&G SEWING EQUIPMENT CO. a division of **WILLCOX & GIBBS, INC.**
 1040 AVENUE OF THE AMERICAS, NEW YORK, NEW YORK 10018 (212) 585-7800



WILLCOX & GIBBS 500 MACHINE
PARTS LIST CATALOGUE

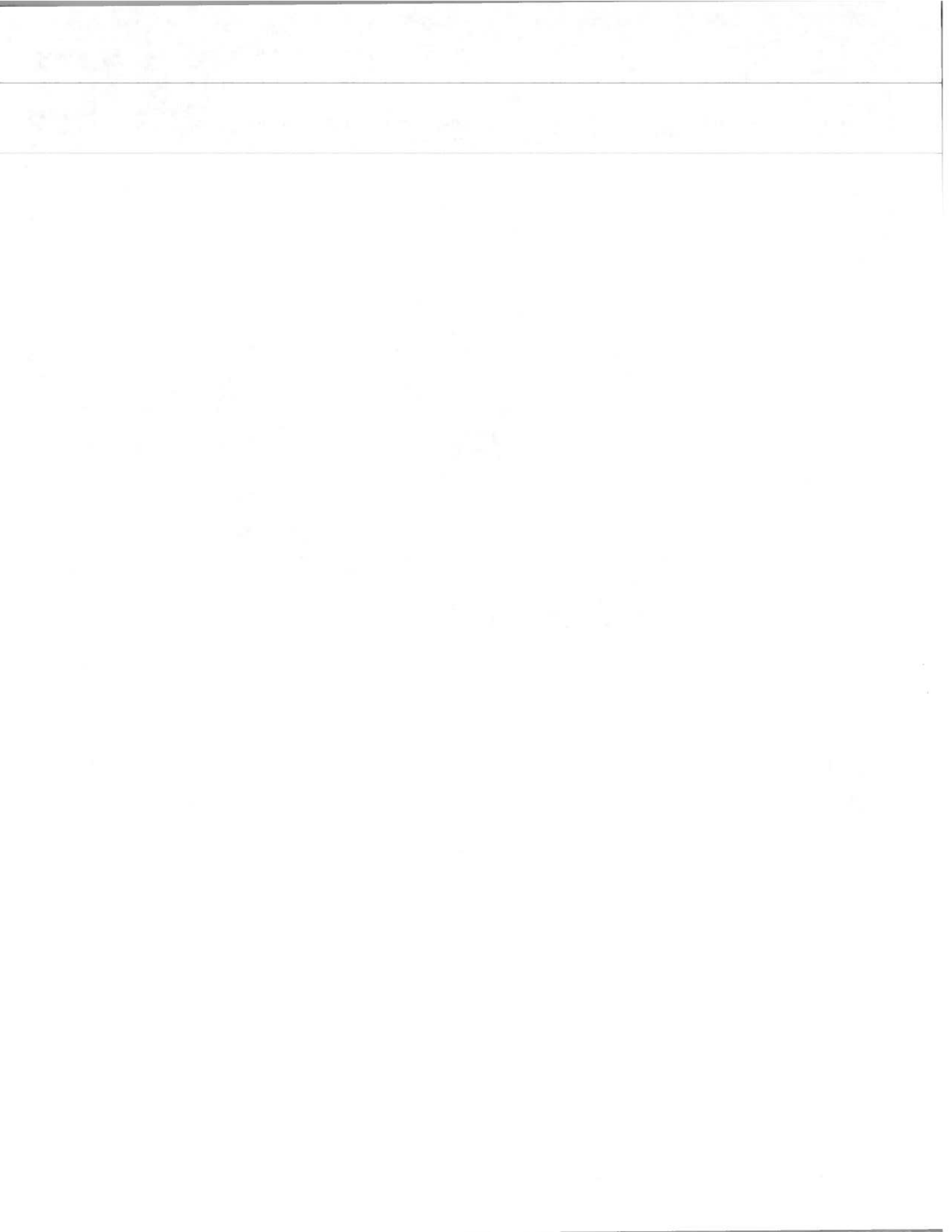
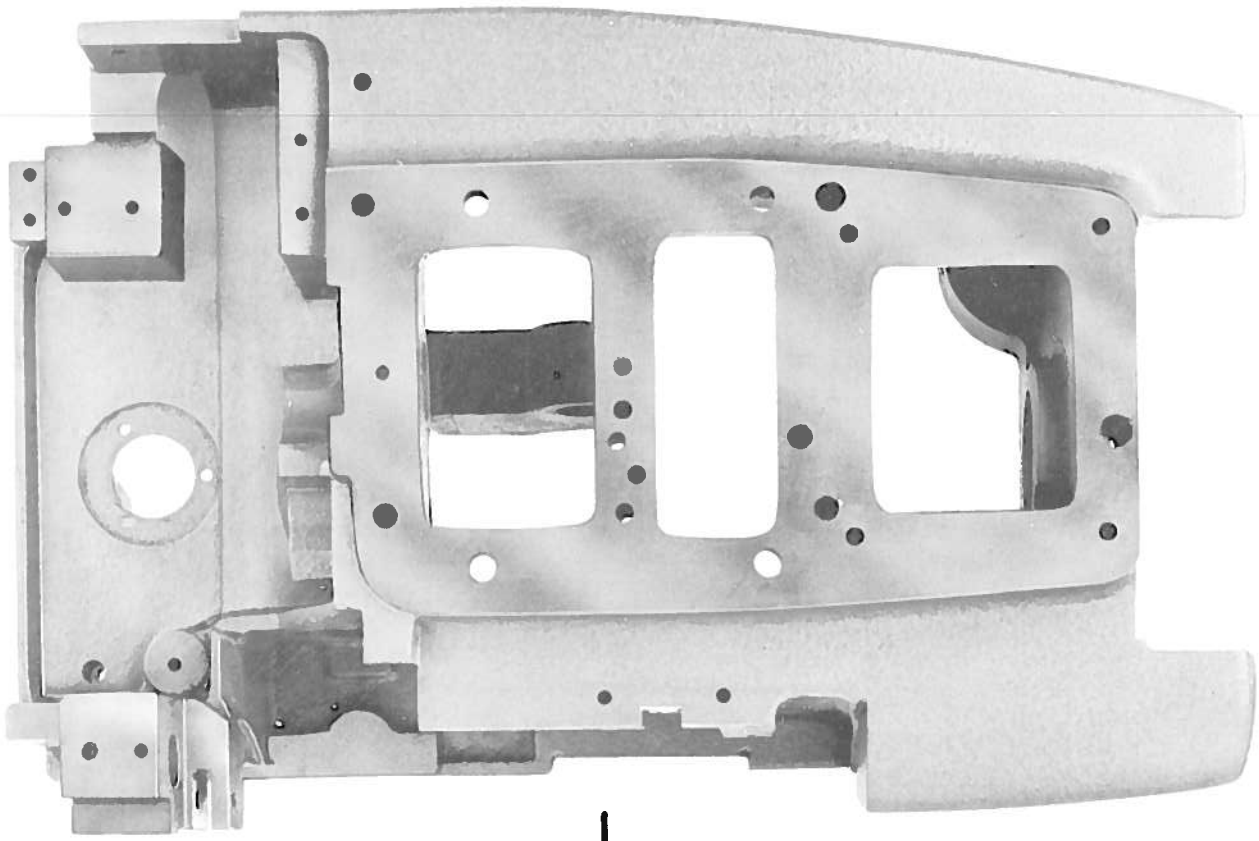
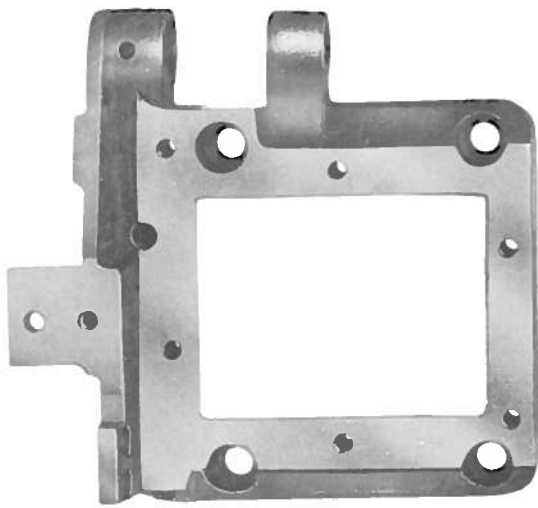


TABLE OF CONTENTS

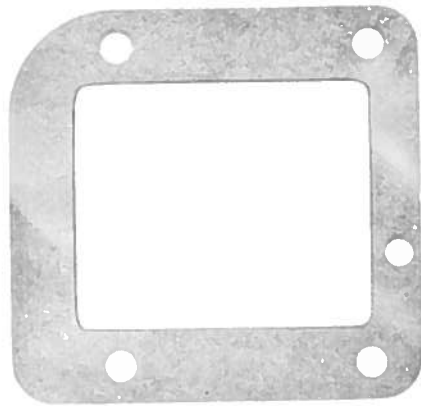
Machine Arm Bed.....	2-3
Crankshaft Mechanism.....	4-5
Needle Drive Mechanism.....	6-7
Right Looper Drive Mechanism.....	8-9
Left Looper Drive Mechanism.....	10-11
Main and Differential Feed Mechanism.....	12-13
Plain Feed Mechanism.....	14-15
Upper and Lower Knife Mechanism.....	16-17
Presser Foot and Lifting Mechanism.....	18-21
Pump Lubricating Mechanism.....	22-23
Pump Lubricating Mechanism (cont.).....	24-25
Main Frame and Miscellaneous Covers.....	26-27
Main Frame Covers.....	28-29
Presser Feet and Feeds.....	30-31
Supplementary Parts Including Needle Plates.....	32-33
Two Needle Machine Parts.....	34-35
Accessories.....	36-37
Mounting Accessories.....	38-39
Thread Stand.....	40-41
Organization Chart for Type 500/I Machines.....	42-43



1



2



3



4



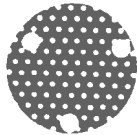
5



9



6



7



8



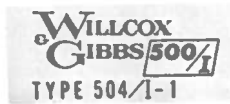
10



11



12



13

MACHINE ARM-BED

<u>REF. NO.</u>	<u>PART NO.</u>	<u>DESCRIPTION</u>
1	323-508-200	Machine Bed Frame
2	323-500-200	Machine Arm
3	323-663-200	Bottom Gasket-Arm
4	323-620-001	Machine Arm-Bed Hinge Pin (2 used)
5	323-600-001	Machine Arm-Frame Screw (4 used)
6	323-655-001	Oil Filter Screen
7	323-800-002	Oil Filter Screen Plate (2 used)
8	323-600-002	Oil Filter Screen Plate Screw (3 used)
9	323-882-001	Oil Sight Gauge
10	323-600-003	Cover Screw (2 used)
11	323-615-001	Cover Screw Washer (2 used)
12	323-620-002	Machine Bed Bottom Pin (4 used)
13	323-692-202	Type Plate (504/1-1)
	323-692-203	Type Plate (504/1-2)
	323-692-204	Type Plate (504/1-3)
	323-692-205	Type Plate (503/1-4)
	323-692-206	Type Plate (504/1-5)
	323-692-207	Type Plate (504/1-6)
	323-692-208	Type Plate (504/1-7)
	323-692-209	Type Plate (503/1-8)
	323-692-210	Type Plate (504/1-9)
	323-692-211	Type Plate (504/1-10)
	323-692-212	Type Plate (514/1-11)

19



21



20



9



10



14



11



15



13



12



16



17



2

4



5



7



8



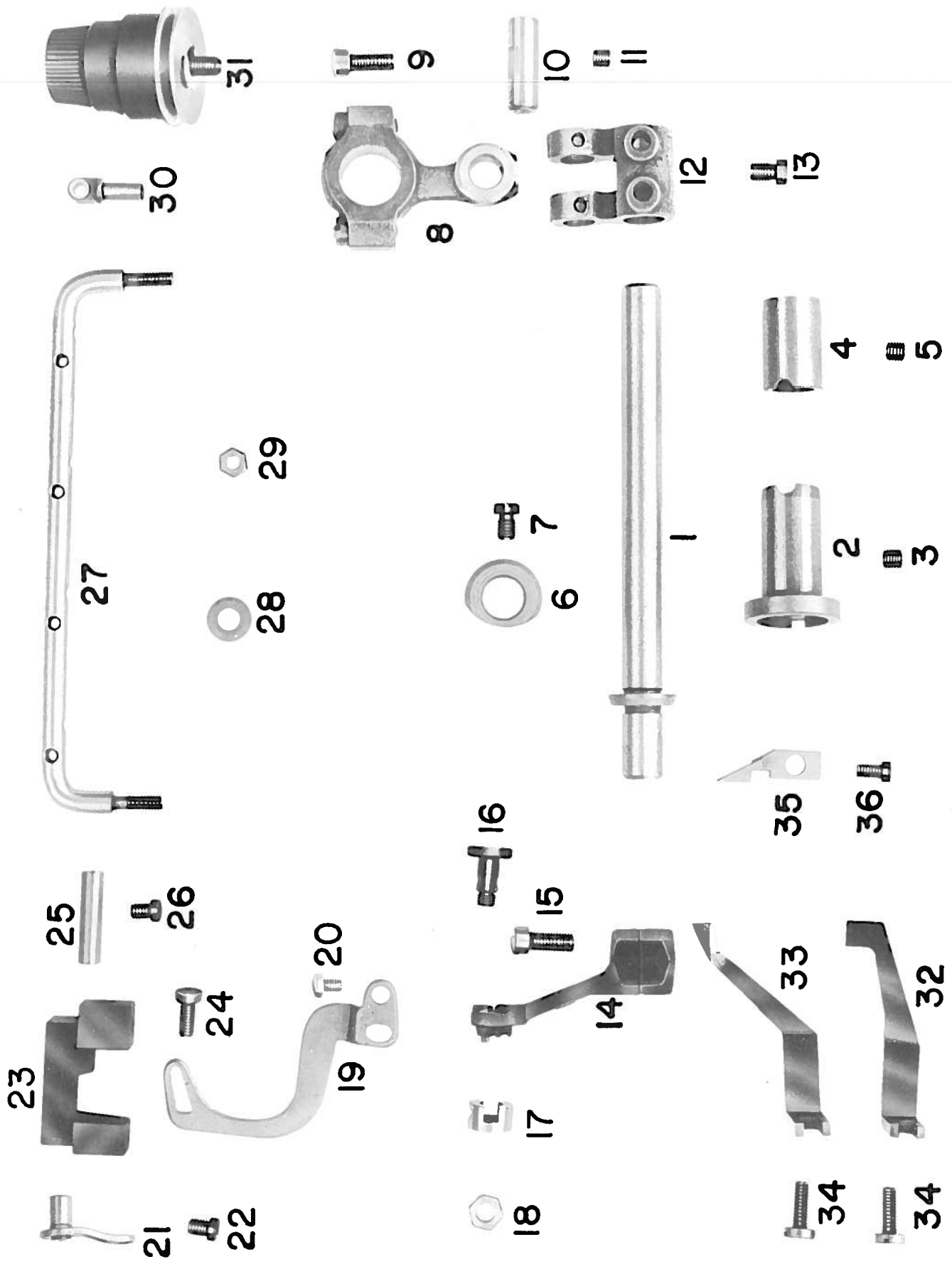
3



6

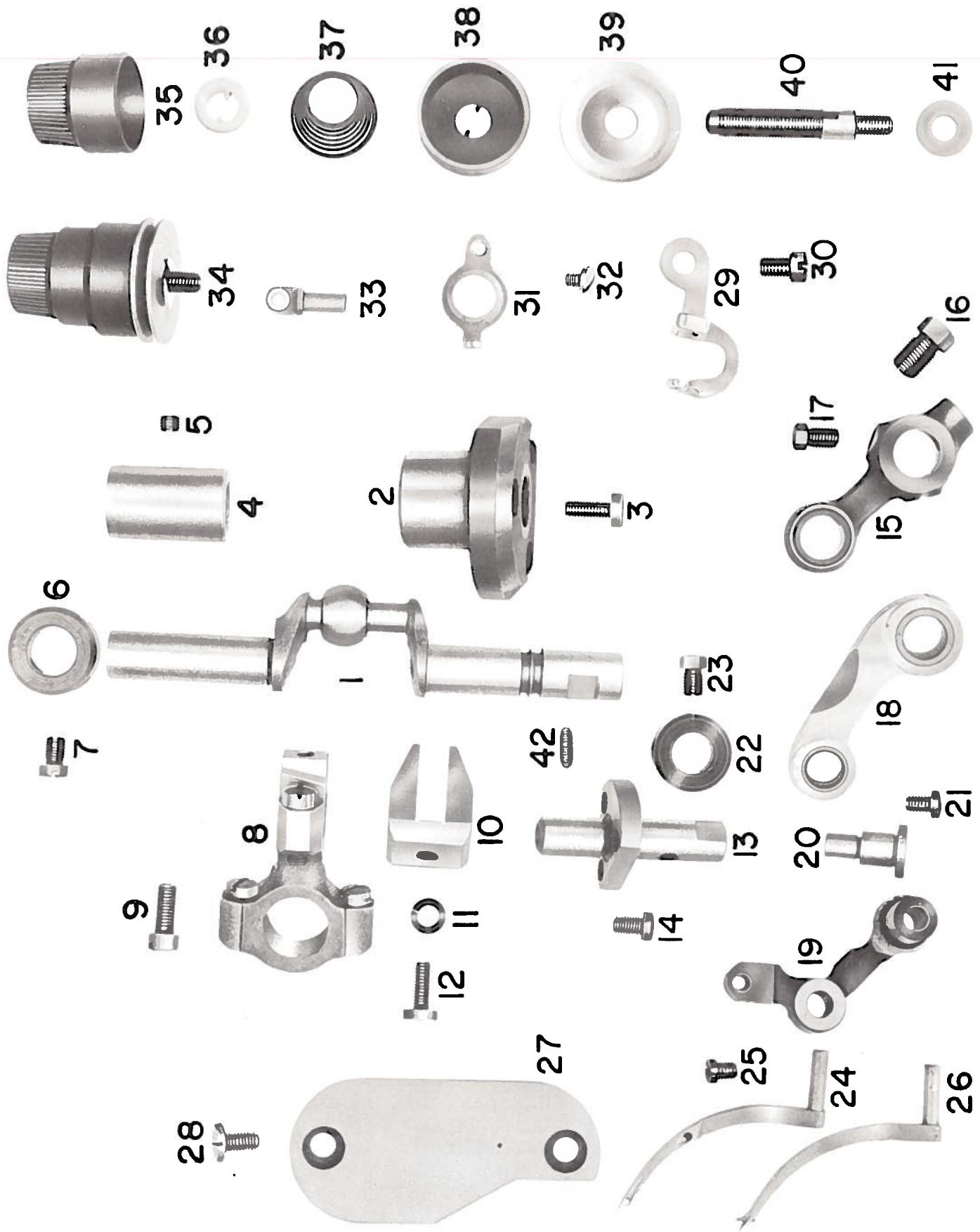
CRANKSHAFT MECHANISM

<u>REF. NO.</u>	<u>PART NO.</u>	<u>DESCRIPTION</u>
1	323-540-200 323-649-001	Crankshaft (Includes 323-649-001) Crankshaft Key
2	323-676-201 323-787-002	Crankshaft Flanged Bushing (Includes 323-787-002) Crankshaft Flanged Bushing Liner
3	323-653-002	Crankshaft Flanged Bushing Oil Wick
4	323-600-002	Crankshaft Flanged Bushing Screw (3 used)
5	323-676-003	Crankshaft Bushing (Center)
6	323-600-007	Crankshaft Bushing (Center) Screw
7	323-676-001 323-787-001	Crankshaft Bushing (Includes 323-787-001) Crankshaft Bushing Liner
8	323-600-005	Crankshaft Bushing Screw
9	323-618-001	Pulley Thrust Washer
10	323-632-001	Pulley "O" Ring (2 used)
11	323-546-001	Pulley
12	323-600-008	Pulley Position Screw
13	323-600-009	Pulley Screw
14	323-780-200	Pulley Cap
15	323-600-010	Pulley Cap Screw (3 used)
16	323-800-200	Pulley Cap Plate
17	323-600-209	Pulley Cap Plate Screw
18	323-579-001	Crankshaft Counterweight
19	323-600-004	Crankshaft Counterweight Screw (2 used)
20	323-850-207	Crankshaft Bushing Oil Wick Guide
21	323-600-006	Crankshaft Bushing Oil Wick Guide Screw (2 used)



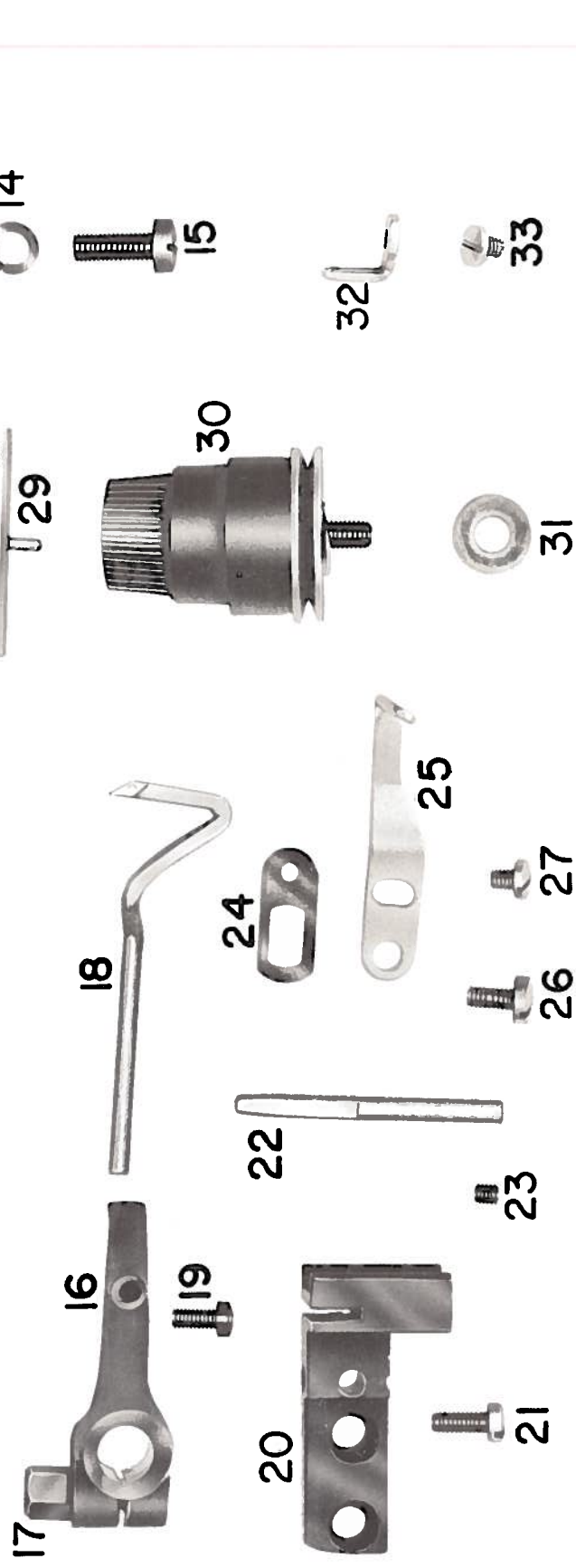
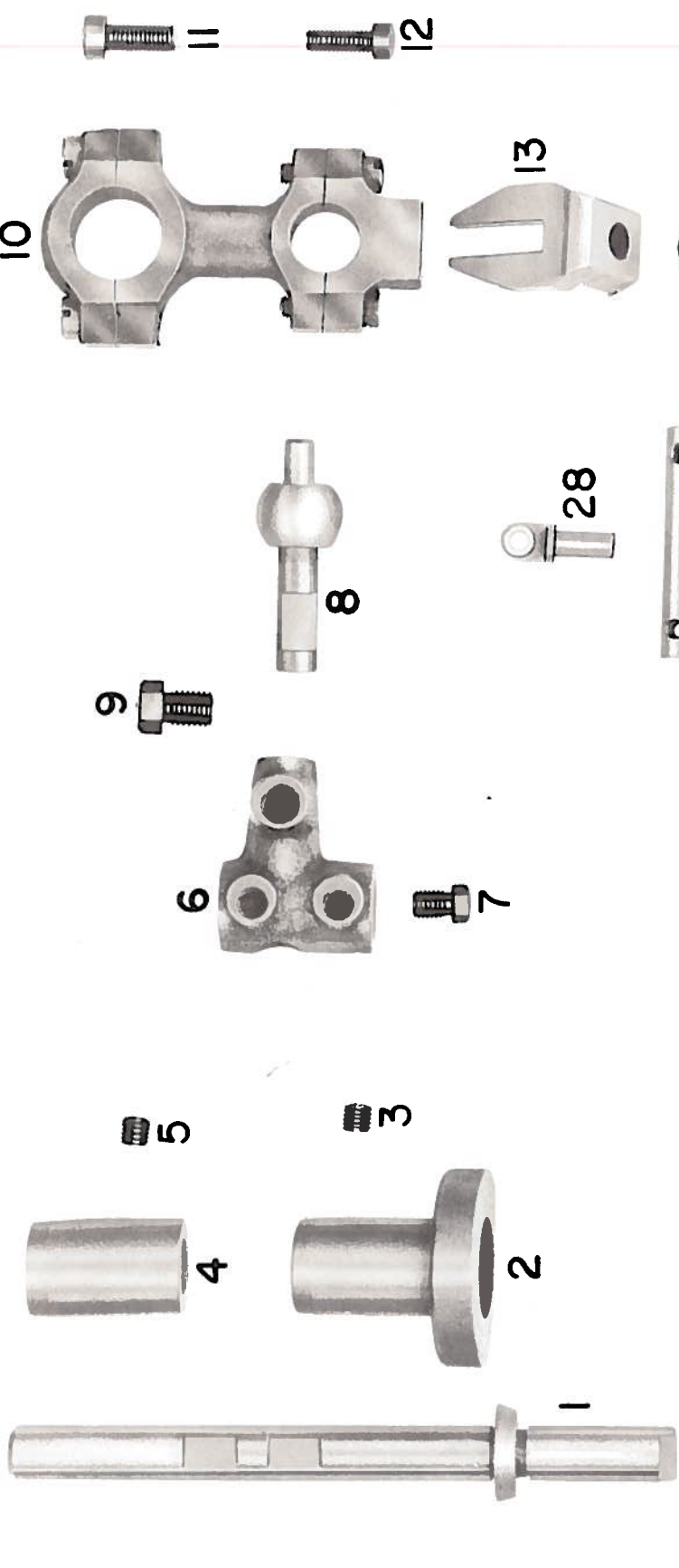
NEEDLE DRIVE MECHANISM

<u>REF. NO.</u>	<u>PART NO.</u>	<u>DESCRIPTION</u>
1	323-540-002	Needle Driving Shaft
2	323-676-004	Needle Driving Shaft Flanged Bushing
3	323-600-012	Needle Driving Shaft Flanged Bushing Screw
4	323-676-005	Needle Driving Shaft Bushing
5	323-600-012	Needle Driving Shaft Bushing Screw
6	323-618-002	Needle Driving Shaft Thrust Washer
7	323-600-013	Needle Driving Shaft Thrust Washer Screw (2 used)
8	323-525-001	Needle Driving Connection
9	323-600-011	Needle Driving Connection Screw (2 used)
10	323-620-003	Needle Driving Connection Hinge Pin
11	323-600-012	Needle Driving Connection Hinge Pin Screw
12	323-576-001	Needle Driving Crank
13	323-600-013	Needle Driving Crank Screw (2 used)
14	323-502-001	Needle Driving Arm (1 needle)
15	323-600-011	Needle Driving Arm Clamp Screw
16	323-604-001	Needle Clamp Screw Stud
17	323-683-001	Needle Clamp (1 needle)
18	323-630-001	Needle Clamp Screw Stud Nut
19	323-866-200	Needle Thread Take-up
20	323-600-016	Needle Thread Take-up Screw (2 used)
21	323-860-001	Thread Take-up Eyelet (needle) (Includes 323-860-002, 323-860-003)
	323-860-002	Thread Take-up Eyelet supplied only with 323-860-001
	323-860-003	Thread Take-up Eyelet supplied only with 323-860-001
22	323-600-017	Thread Take-up Eyelet Screw
23	323-740-001	Needle Thread Tube Bracket
24	323-600-002	Needle Thread Tube Bracket Screw (2 used)
25	323-639-001	Needle Thread Tube
26	323-600-017	Needle Thread Tube Screw
27	323-851-001	Thread Guide
28	323-615-002	Thread Guide Washer (2 used)
29	323-630-003	Thread Guide Nut (2 used)
30	323-860-200	Thread Eyelet
31	323-900-200	Needle Tension Complete [Includes 323-630-200 Tension Regulating Thumb Nut (3 used), 323-676-202 Tension Spring Bushing (3 used), 323-642-001 Tension Spring for Needle Thread, 323-780-002 Tension Spring Cap (3 used), 323-613-001 Tension Disc (6 used), 323-604-201 Tension Post (3 used), 323-615-017 Tension Post Washer (3 used)]
32	323-561-001	Needle Guard (Front) single needle
33	323-561-002	Needle Guard (Back) single needle
34	323-600-019	Needle Guard Screw (2 used)
35	323-649-002	Needle Plate Key
36	323-600-015	Needle Plate Key Screw



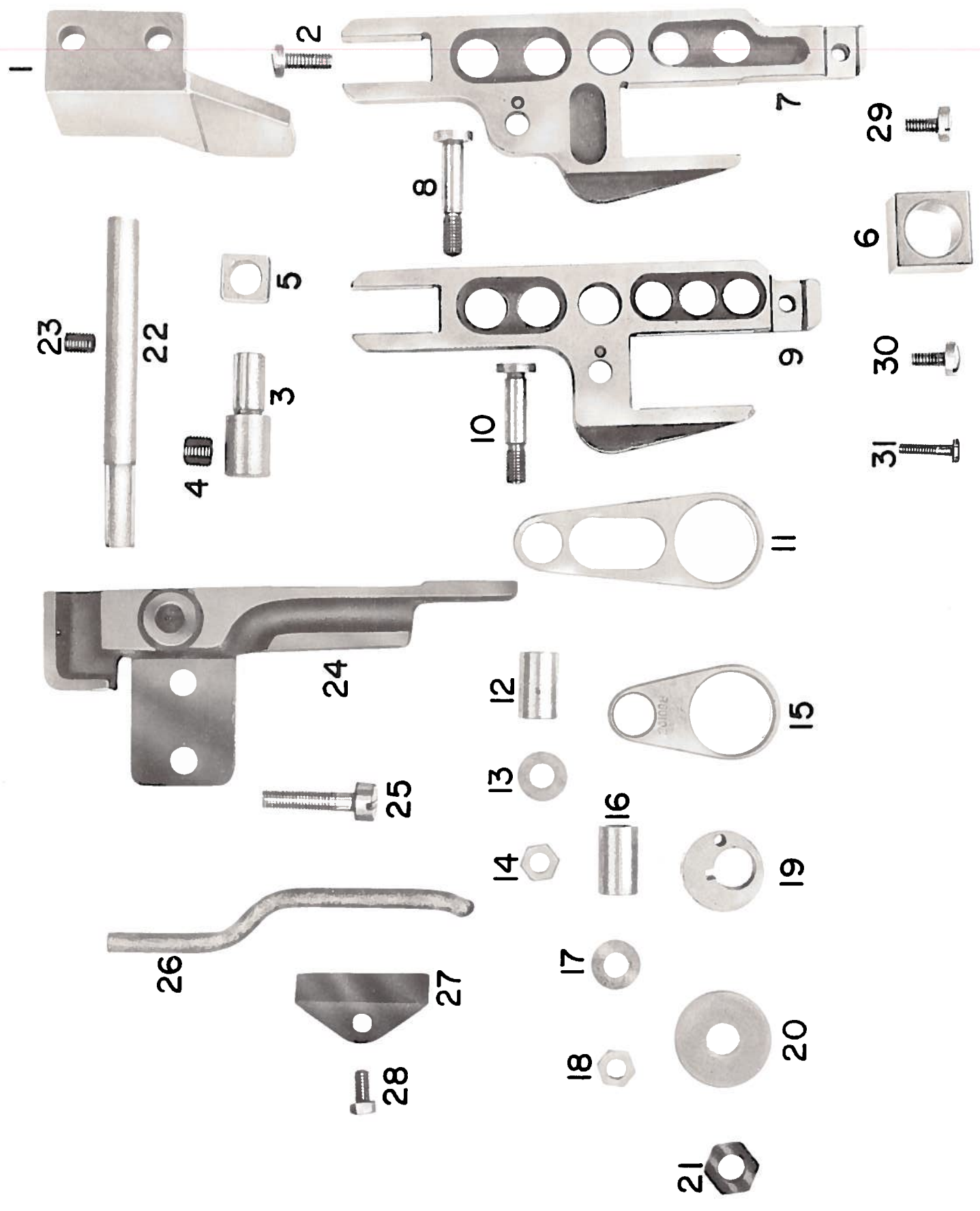
RIGHT LOOPER DRIVE MECHANISM

<u>REF. NO.</u>	<u>PART NO.</u>	<u>DESCRIPTION</u>
1	323-540-003	Right Looper Crankshaft
2	323-676-006	Right Looper Crankshaft Flanged Bushing (Includes 323-787-003)
	323-787-003	Right Looper Crankshaft Flanged Bushing Lining
3	323-600-019	Right Looper Crankshaft Flanged Bushing Screw (3 used)
4	323-676-007	Right Looper Crankshaft Bushing
5	323-600-012	Right Looper Crankshaft Bushing Screw
6	323-618-003	Right Looper Crankshaft Thrust Washer
7	323-600-013	Right Looper Crankshaft Thrust Washer Screw
8	323-525-002	Right Looper Connection Rod (Includes 323-600-011) (4 used)
9	323-600-011	Right Looper Connection Rod Screw (4 used)
10	323-850-002	Right Looper Connection Rod Guide
11	323-615-003	Right Looper Connection Guide Screw Washer
12	323-600-019	Right Looper Connecting Rod Guide Screw
13	323-604-003	Right Looper Lever Link Hinge Stud
14	323-600-024	Right Looper Lever Link Hinge Stud Screw (3 used)
15	323-525-003	Right Looper Lever Connection (Includes 323-676-008)
	323-676-008	Right Looper Lever Connection Bushing
16	323-600-022	Right Looper Lever Connection Clamp Screw
17	323-600-023	Right Looper Lever Connection Adjusting Screw (2 used)
18	323-730-001	Right Looper Lever Link (Includes 323-676-009, 323-676-010)
	323-676-009	Right Looper Lever Link Front Bushing
	323-676-010	Right Looper Lever Link Rear Bushing
19	323-530-001	Right Looper Lever
20	323-620-200	Right Looper Lever Hinge Pin
21	323-600-021	Right Looper Lever Hinge Pin Screw
22	323-618-005	Right Looper Lever Link Thrust Washer
23	323-600-013	Right Looper Lever Link Thrust Washer Screw(2 used)
24	323-810-001	Right Looper Styles 504, 514
25	315-600-003	Right Looper Clamp Screw (Met. 144)
26	323-810-003	Right Looper 503 Styles
27	323-800-004	Right Looper Lever Guide Plate
28	323-600-014	Right Looper Lever Guide Plate Screw (2 used)
29	323-866-002	Thread Take-up (Right Looper)
30	323-600-025	Thread Take-up Screw (Right Looper)
31	323-860-005	Thread Take-up Eyelet (Right Looper)
32	323-600-026	Thread Take-up Eyelet Screw (2 used)
33	323-860-200	Thread Eyelet (4 used)
34	323-900-201	Right Looper Tension Complete (Includes 323-630-200, 323-676-202, 323-642-002, 323-780-002, 323-613-001 (2), 323-604-201, 323-615-017)
35	323-630-200	Right Looper Regulating Thumb Nut (3 used)
36	323-676-202	Right Looper Spring Bushing (3 used)
37	323-642-002	Right Looper Tension Spring
38	323-780-002	Right Looper Tension Spring Cap (3 used)
39	323-613-001	Right Looper Tension Disc (6 used)
40	323-604-201	Right Looper Tension Post (3 used)
41	323-615-017	Right Looper Tension Post Washer (3 used)
42	323-653-003	Right Looper Lever Connection Oil Wick(not shown)



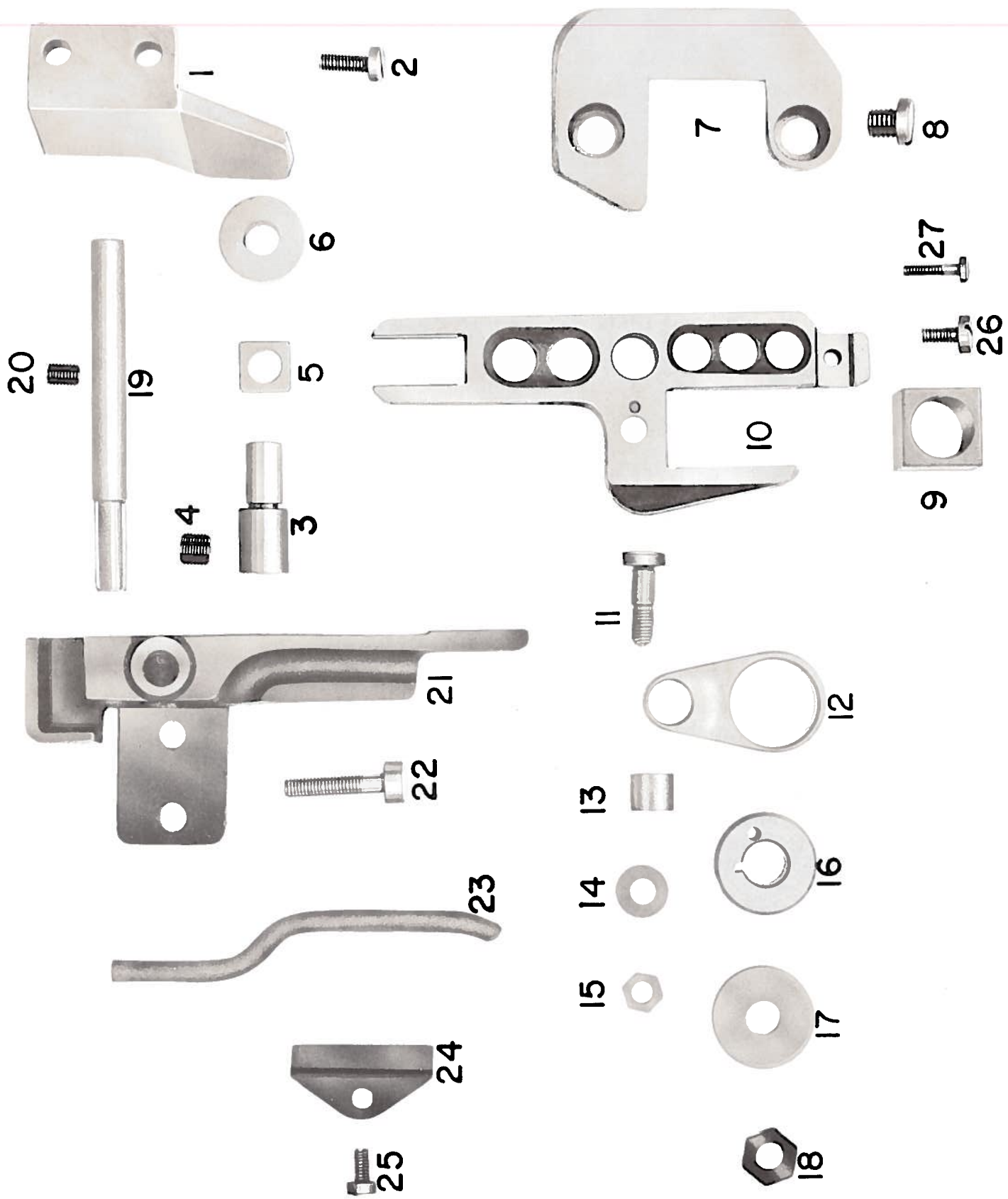
LEFT LOOPER DRIVE MECHANISM

<u>REF. NO.</u>	<u>PART NO.</u>	<u>DESCRIPTION</u>
1	323-540-004	Left Looper Lever Shaft
2	323-676-011	Left Looper Lever Shaft Flanged Bushing
3	323-600-012	Left Looper Lever Shaft Flanged Bushing Screw
4	323-676-012	Left Looper Lever Shaft Bushing
5	323-600-012	Left Looper Lever Shaft Bushing Screw
6	323-576-002	Left Looper Lever Connection Crank
7	323-600-013	Left Looper Lever Connection Crank Screw(2 used)
8	323-604-004	Left Looper Connection Ball Stud
9	323-600-028	Left Looper Connection Ball Stud Screw
10	323-525-200	Left Looper Connection Rod (Includes 323-600-011(2), 323-600-020 (2))
11	323-600-011	Left Looper Connection Rod Screw (2 used)
12	323-600-020	Left Looper Connection Rod Screw
13	323-850-200	Left Looper Connection Rod Guide
14	323-617-200	Left Looper Connection Guide Screw Lock Washer
15	323-600-200	Left Looper Connection Guide Screw
16	323-530-002	Left Looper Lever
17	323-600-030	Left Looper Lever Clamp Screw
18	323-810-002	Left Looper (all styles)
19	323-600-031	Left Looper Clamp Screw
20	323-740-003	Left Looper Thread Tube Bracket
21	323-600-002	Needle Thread Tube Bracket Screw (2 used)
22	323-639-002	Left Looper Thread Tube
23	323-600-033	Left Looper Thread Tube Screw
24	323-740-002	Left Looper Thread Take-up Bracket
25	323-866-003	Left Looper Thread Take-up
26	323-600-032	Left Looper Thread Take-up Bracket Screw
27	323-600-026	Left Looper Thread Take-up Screw
28	323-860-200	Left Looper Thread Eyelet (4 used)
29	323-851-002	Left Looper Thread Guide
30	323-900-202	Left Looper Tension Complete[Includes
	323-630-200	Tension Regulating Thumb Nut (3 used)
	323-676-202	Tension Spring Bushing,
	323-642-003	Tension Spring for Left Looper,
	323-780-002	Tension Spring Cap (3 used),
	323-613-001	Tension Disc (6 used),
	323-604-201	Tension Post]
31	323-615-017	Left Looper Tension Post (3 used)
32	323-860-006	Left Looper Thread Take-up Eyelet
33	323-600-026	Left Looper Thread Take-up Eyelet Screw (2 used)



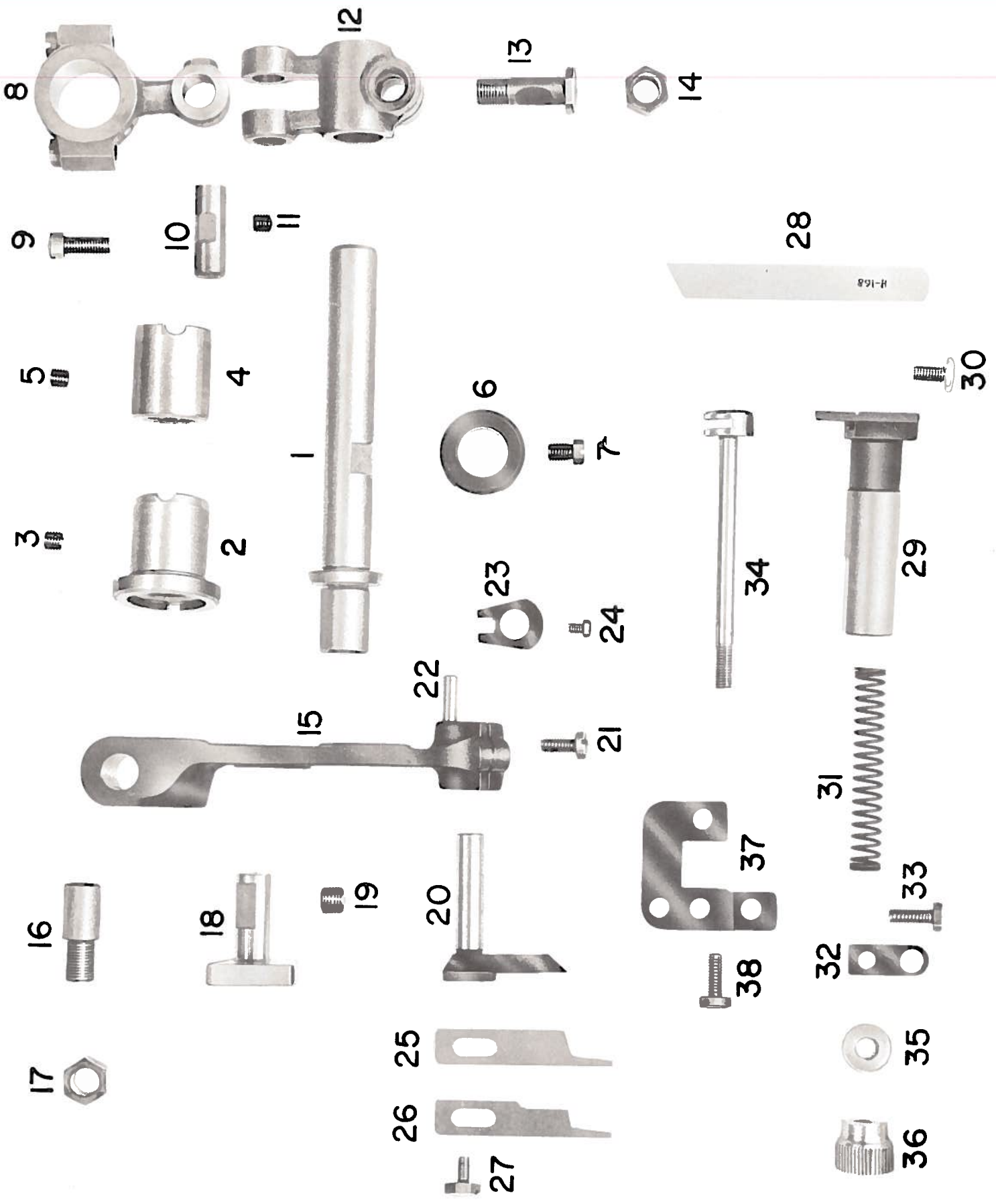
MAIN AND DIFFERENTIAL FEED MECHANISM

<u>REF. NO.</u>	<u>PART NO.</u>	<u>DESCRIPTION</u>
1	323-850-005	Feed Bar Guide (Back)
2	323-600-019	Feed Bar Guide Screw (2 used)
3	323-620-201	Feed Bar Connecting Hinge Pin
4	323-600-043	Feed Bar Connecting Hinge Pin Screw
5	323-750-002	Feed Bar Guide Block
6	323-750-001	Feed Bar Lift Block
7	323-593-002	Differential Feed Bar
8	323-600-036	Differential Feed Connection Link Bushing Screw
9	323-593-001	Main Feed Bar
10	323-600-036	Main Feed Bar Connecting Link Bushing Screw
11	323-730-003	Differential Feed Connecting Link
12	323-676-013	Differential Feed Connecting Link Bushing
13	323-615-002	Differential Feed Connecting Link Bushing Washer Nut
14	323-630-001	Differential Feed Connecting Link Bushing Nut
15	323-730-002	Main Feed Connecting Link
16	323-676-013	Main Feed Connecting Link Bushing
17	323-615-002	Main Feed Bar Connecting Link Bushing Washer (Differential)(1 used)
18	323-630-001	Main Feed Bar Connecting Link Bushing Screw Nut
19	323-580-004	thru 323-580-080 - see organization list for requirements and special sheet for other sizes available (Pages 43)
20	323-615-006	Feed Eccentric Lock Nut Washer
21	323-630-004	Feed Eccentric Lock Nut
22	323-639-003	Main Feed Bar Guide Oil Tube
23	323-600-037	Main Feed Bar Guide Oil Tube Screw
24	323-850-201	Feed Bar Guide
25	323-600-038	Feed Bar Guide Screw (2 used)
26	323-639-201	Feed Eccentric Oil Tube Holder
28	323-600-029	Feed Eccentric Oil Tube Holder Screw
29	323-600-032	Differential Feed Dog Screw
30	323-600-032	Main Feed Dog Screw
31	323-600-035	Auxiliary Feed Dog Screw



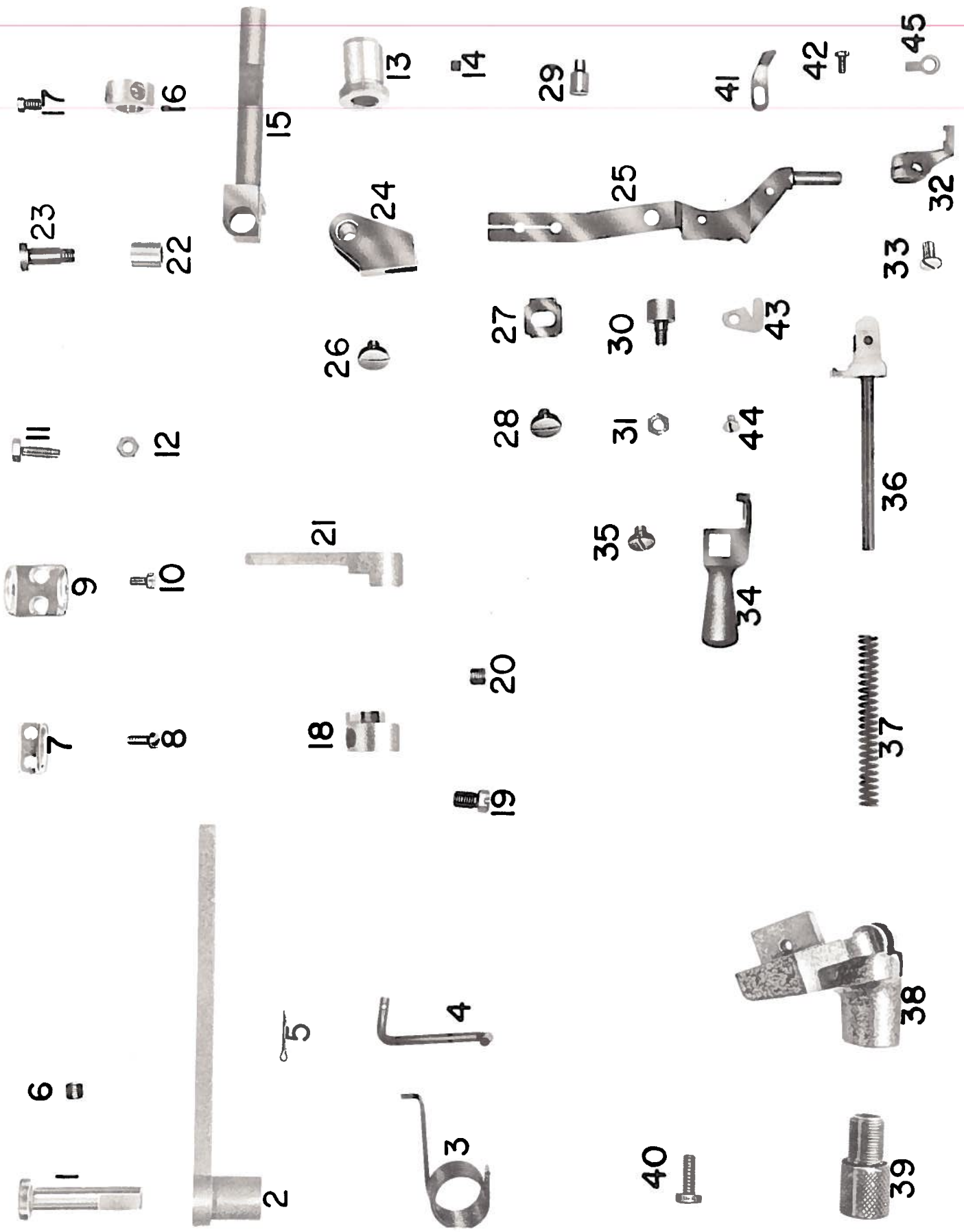
PLAIN FEED MECHANISM

<u>REF. NO.</u>	<u>PART NO.</u>	<u>DESCRIPTION</u>
1	323-850-005	Feed Bar Guide (back)
2	323-600-019	Feed Bar Guide Screw (2 used)
3	323-620-201	Feed Bar Connecting Hinge Pin
4	323-600-043	Feed Bar Connecting Hinge Screw
5	323-750-002	Feed Bar Guide Block
6	323-850-204	Plain Feed Bar Inside Back Guide
7	323-850-203	Plain Feed Bar Inside Front Guide
8	323-600-207	Plain Feed Bar Inside Front Guide Screw (2 used)
9	323-750-001	Feed Bar Lift Block
10	323-593-001	Main Feed Bar
11	323-600-205	Plain Feed Dog Bar Connecting Link Bushing Screw
12	323-730-002	Main Feed Connecting Link
13	323-676-200	Plain Feed Bar Connecting Link Bushing
14	323-615-002	Main Feed Bar Connecting Link Bushing Washer
15	323-630-001	Main Feed Bar Connecting Link Bushing Screw Nut
16	323-680-200	Plain Feed Bar Connecting Link Collar
17	323-615-006	Feed Eccentric Lock Nut Washer
18	323-630-004	Feed Eccentric Lock Nut
19	323-639-003	Main Feed Bar Guide Oil Tube
20	323-600-037	Main Feed Bar Guide Oil Tube Screw
21	323-850-201	Feed Bar Guide
22	323-600-038	Feed Bar Guide Screw (2 used)
23	323-639-201	Feed Eccentric Oil Tube
24	323-685-200	Feed Eccentric Oil Tube Holder
25	323-600-029	Feed Eccentric Oil Tube Holder Screw
26	323-600-032	Main Feed Dog Screw
27	323-600-035	Auxiliary Feed Dog Screw



UPPER AND LOWER KNIFE MECHANISM

<u>REF. NO.</u>	<u>PART NO.</u>	<u>DESCRIPTION</u>
1	323-540-005	Upper Knife Lever Shaft
2	323-676-014	Upper Knife Lever Shaft Flanged Bushing
3	323-600-041	Upper Knife Lever Shaft Flanged Bushing Screw
4	323-676-015	Upper Knife Lever Shaft Bushing
5	323-600-041	Upper Knife Lever Shaft Bushing Screw
6	323-618-006	Upper Knife Lever Shaft Thrust Washer
7	323-600-013	Upper Knife Lever Shaft Thrust Washer Screw(2 used)
8	323-525-201	Upper Knife Connection Rod (Includes 323-600-011) (2 used)
9	323-600-011	Upper Knife Connection Rod Screw (2 used)
10	323-620-003	Upper Knife Connection Rod Hinge Pin
11	323-600-012	Upper Knife Connection Rod Hinge Pin Screw
12	323-576-200	Upper Knife Lever Shaft Crank
13	323-600-040	Upper Knife Lever Shaft Crank Clamp Screw
14	323-630-005	Upper Knife Lever Shaft Crank Clamp Screw Nut
15	323-530-202	Upper Knife Lever (Includes 323-620-006)
16	323-600-042	Upper Knife Lever Cotter Screw
17	323-630-005	Upper Knife Lever Cotter Screw Nut
18	323-850-205	Upper Knife Lever Guide
19	323-600-043	Upper Knife Lever Guide Screw
20	323-685-203	Upper Knife Holder
21	323-600-002	Upper Knife Holder Clamp Screw
22	323-620-006	Upper Knife Holder Guide Pin
23	323-850-206	Upper Knife Lever Guide
24	323-600-045	Upper Knife Holder Guide Screw
25	323-870-200	Upper Knife (Wide Blade) all styles except 504/I-1, 504/I-9, 504/I-2
26	323-870-201	Upper Knife (Narrow Blade) 504/I-1, 504/I-2, 504/I-9
27	323-600-044	Upper Knife Screw
28	323-870-202	Lower Knife (Thick Blade) all 5/32" gauges and 514/I-11
	323-870-203	Lower Knife (Thin Blade) all 1/16", 1/8" and 3/32" gauge machines styles 1 thru 9
29	323-685-002	Lower Knife Holder
30	323-600-014	Lower Knife Holder Adjusting Screw
31	323-640-001	Lower Knife Holder Spring
32	323-686-001	Lower Knife Holder Spring Retainer
33	323-600-019	Lower Knife Holder Spring Retainer Screw
34	323-604-200	Lower Knife Clamp Stud
35	323-615-007	Lower Knife Clamp Stud Washer
36	323-630-007	Lower Knife Clamp Stud Nut
37	323-850-008	Lower Knife Holder Guide
38	323-600-019	Lower Knife Holder Guide Screw (2 used)



PRESSER FOOT AND LIFTING MECHANISM

<u>REF. NO.</u>	<u>PART NO.</u>	<u>DESCRIPTION</u>
1	323-604-008	Foot Lifting Lever Hinge Stud
2	323-530-006	Foot Lifting Lever
3	323-643-002	Foot Lifting Lever Spring
4	323-730-004	Foot Lifting Lever Connecting Link
5	323-622-001	Foot Lifting Lever Connecting Link Cotter Pin(2 used)
6	323-600-043	Foot Lifting Lever Stud Screw
7	323-850-010	Foot Lifting Lever Bracket Guide
8	323-600-019	Foot Lifting Lever Bracket Guide Screw (2 used)
9	323-740-005	Foot Lifting Lever Bracket
10	323-600-054	Foot Lifting Lever Bracket Screw (2 used)
11	323-600-055	Foot Lifting Lever Regulating Screw (2 used)
12	323-630-001	Foot Lifting Lever Regulating Screw Nut (2 used)
13	323-676-016	Foot Lifting Lever Shaft Bushing
14	323-600-012	Foot Lifting Lever Shaft Bushing Screw
15	323-540-201	Foot Lifting Lever Shaft
16	323-680-001	Foot Lifting Lever Shaft Collar
17	323-600-013	Foot Lifting Lever Shaft Collar Screw
18	323-680-003	Foot Lifting Lever Collar
19	323-600-022	Foot Lifting Lever Collar Screw (long)
20	323-600-043	Foot Lifting Lever Collar Screw
21	323-530-007	Foot Lifting Intermediate Lever
22	323-680-002	Presser Arm Stud Screw Collar
23	323-600-047	Presser Foot Arm Swing Out Hinge Screw Stud
24	323-525-202	Presser Foot Arm Swing Out Connection
25	323-502-201	Presser Foot Arm
26	323-600-206	Presser Foot Arm Screw



6



7



9



11



23



17



2



16



22



12



10



5



15



18



21



26



24



13



4



3



19



20



28



27



29



14



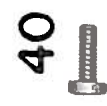
35



31



30



40



34



44



43



41



36



37



38



39



25



33



32



45



42

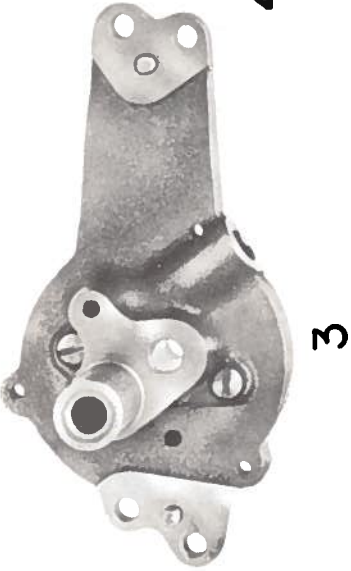
PRESSER FOOT AND LIFTING MECHANISM

<u>REF. NO.</u>	<u>PART NO.</u>	<u>DESCRIPTION</u>
27	323-683-201	Presser Foot Arm Adjusting Clamp
28	323-600-206	Presser Foot Arm Adjusting Clamp Screw
29	323-600-212	Presser Foot Arm Stop Screw
30	323-600-213	Presser Foot Arm Regulating Stop Screw
31	323-630-202	Presser Arm Regulator Stop Screw Nut
32	323-685-202	Presser Foot Holder
33	323-600-014	Presser Foot Holder Clamp Screw
34	323-530-201	Presser Foot Lifting Lever (Hand)
35	323-600-211	Presser Foot Lifting Lever (Hand) Screw
36	323-850-202	Presser Foot Arm Locking Guide
37	323-640-002	Pressure Regulating Spring
38	323-740-200	Presser Foot Pressure Bar Bracket
39	323-600-204	Presser Foot Pressure Regulating
40	323-600-216	Presser Foot Pressure Bar Bracket Screw (2 used)
41	323-716-200	Presser Foot Tilting Regulator
42	323-600-050	Presser Foot Tilting Regulator Screw
43	323-873-200	Chaincutter
44	323-600-026	Chaincutter Screw
45	323-643-001	Presser Foot Hinge Spring

Following not shown:

New Parts starting with machine serial #8011011

323-540-203	Foot Lifting Lever Shaft (replaces #202506)
323-740-201	Presser Foot Swing Out Arm Connection Bracket
323-600-217	Presser Foot Swing Out Arm Connection Bracket Clamp Screw
323-615-201	Foot Lifting Lever Shaft Space Washer
323-615-201	Foot Lifting Lever Shaft Snap-on Stop Washer



3



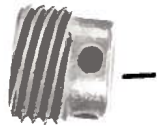
4



12



13



1



7



5



6



2



8



9



11



26



27



28



18



14



15



16



19



20



21



22



29



30



31



32



17



23



24



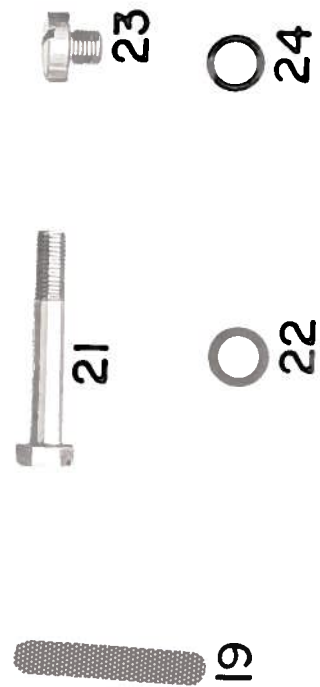
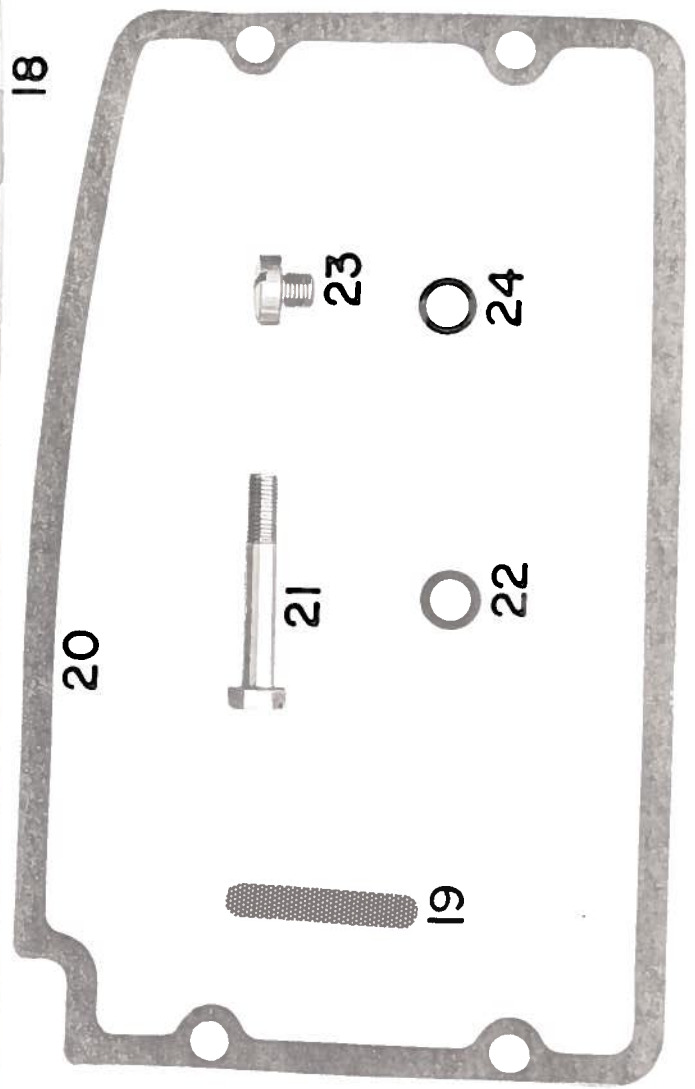
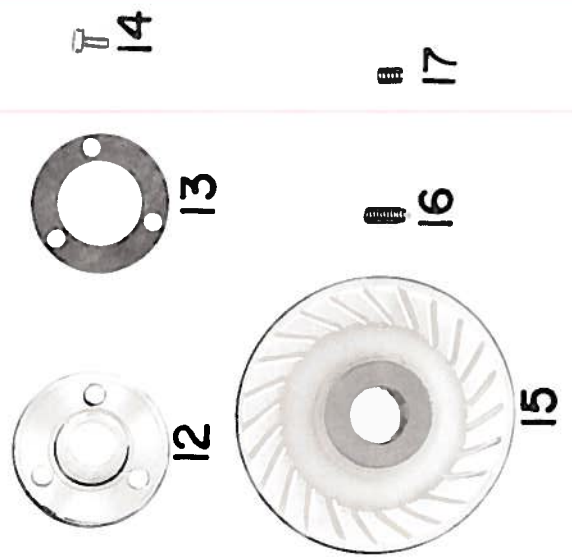
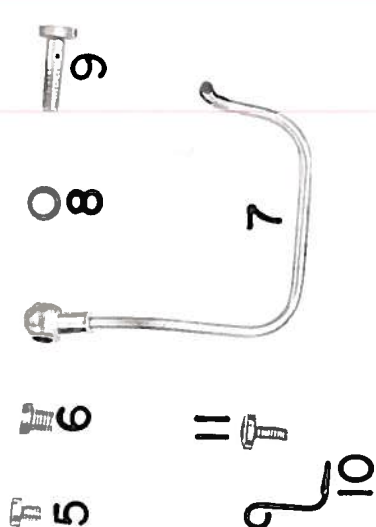
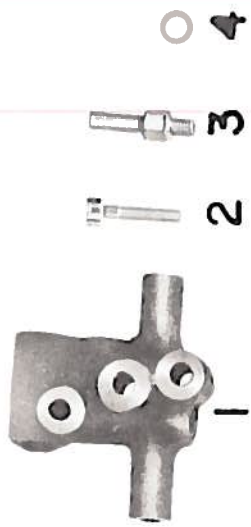
25

PUMP LUBRICATING MECHANISM

<u>REF. NO.</u>	<u>PART NO.</u>	<u>DESCRIPTION</u>
1	323-765-001	Worm Wheel (for Main Shaft)
2	323-600-043	Worm Wheel Screw (2 used)
3	323-900-001	Pump Housing Complete (Includes
	323-505-001	Pump Base
	323-515-001	Gear Casing Housing,
	323-600-056	Gear Housing Screw (2 used),
	323-622-002	Gear Casing Cotter Pin,
	323-622-003	Gear Casing Cotter Pin (B)]
4	323-600-056	Pump Casing Complete Screw (4 used)
5	323-540-007	Gear Shaft(A) (Includes 323-649-001)
	323-649-001	Crankshaft Key
6	323-764-001	Pump Gear (A) for 323-540-007
7	323-570-001	Worm Wheel for 323-540-007
8	323-600-004	Worm Wheel Screw (2 used)
9	323-540-008	Gear Shaft (B)
10	323-600-037	Gear Shaft (B) Screw
11	323-764-002	Pump Gear (B) for 323-570-001
12	323-800-006	Pump Casing Plate
13	323-600-057	Pump Casing Plate Screw (4 used)
14	323-655-002	Oil Screen Filter (Includes 323-655-003, 323-655-004)
	323-655-003	Oil Screen Filter External
	323-655-004	Oil Screen Filter Internal
15	323-663-001	Oil Screen Filter Gasket
16	323-508-002	Oil Screen Filter Frame
17	323-600-002	Oil Screen Filter Screw
18	323-900-002	Oil Cooler Assembly [Includes 323-639-005 (3), 323-800-007, 323-636-002 (2)]
19	323-683-004	Oil Cooling Tube Plate Clamp
20	323-600-059	Oil Cooling Tube Plate Clamp Screw
21	323-663-002	Oil Cooler Plate Gasket
22	323-800-008	Oil Cooler Plate
23	323-600-060	Oil Cooler Plate Gasket Screw (short)
24	323-600-061	Oil Cooler Plate Gasket Screw (long)
25	323-615-009	Oil Cooler Plate Gasket Screw Washer (2 used)
26	323-639-009	Oil Distributing Tube
27	323-683-003	Oil Distributing Tube Spring Cover
28	323-639-200	Oil Distributing Tube
29	323-636-001	Oil Distributing Tube Connector (2 used)
30	323-600-058	Oil Distributing Tube Connector Screw (2 used)
31	323-615-008	Oil Distributing Tube Connector Screw Washer(2 used)
32	323-683-002	Oil Distributing Tube Clamp (4 used)

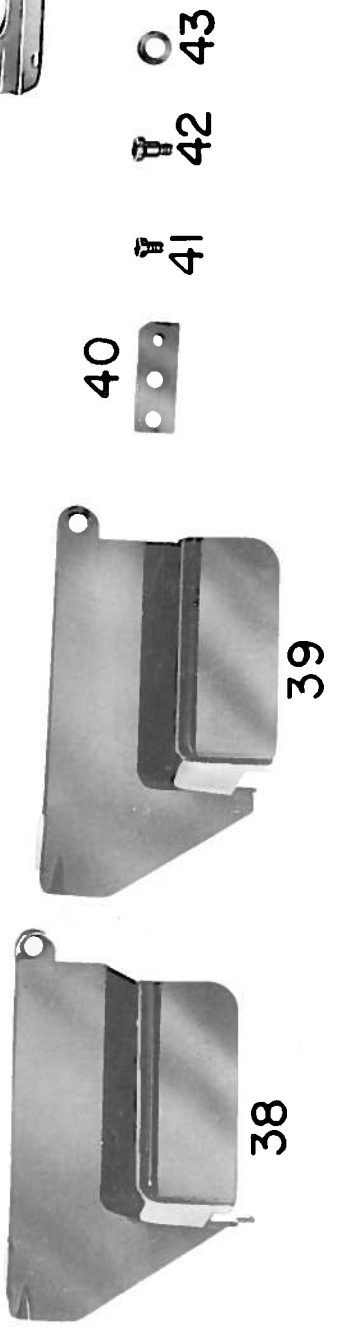
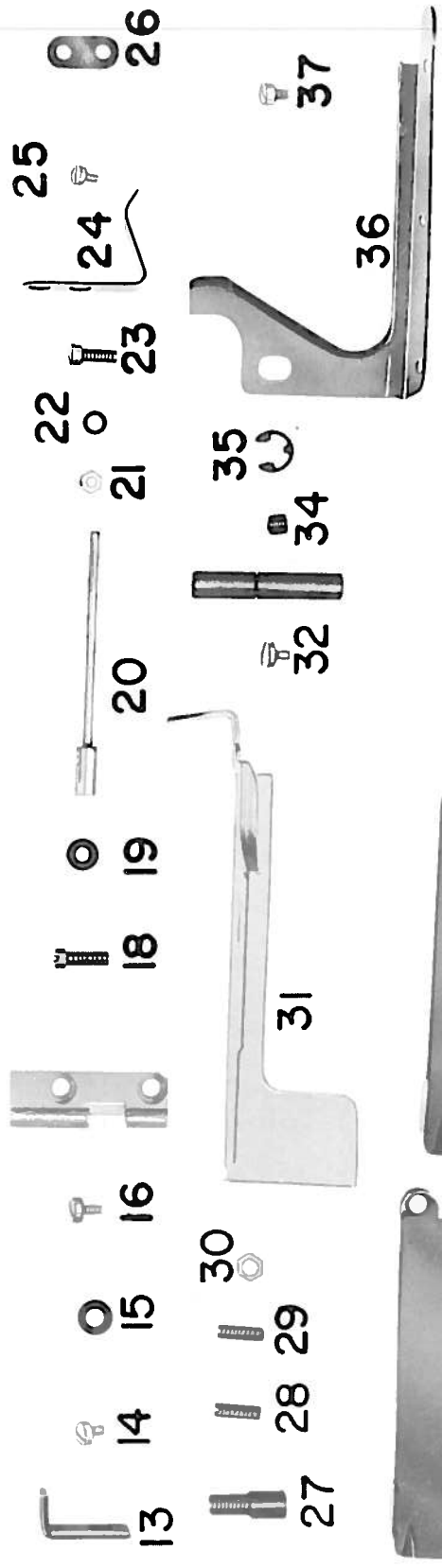
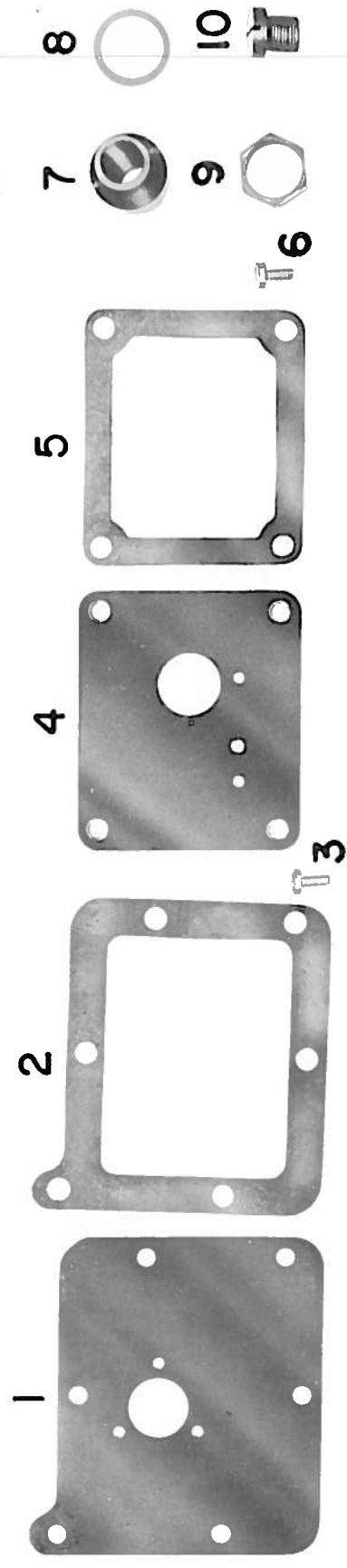
Not Shown

323-620-007 Pump Casing Hinge Pin



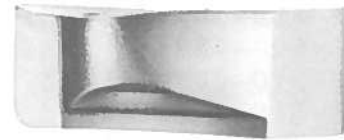
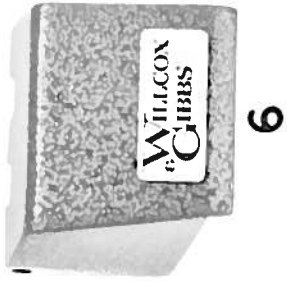
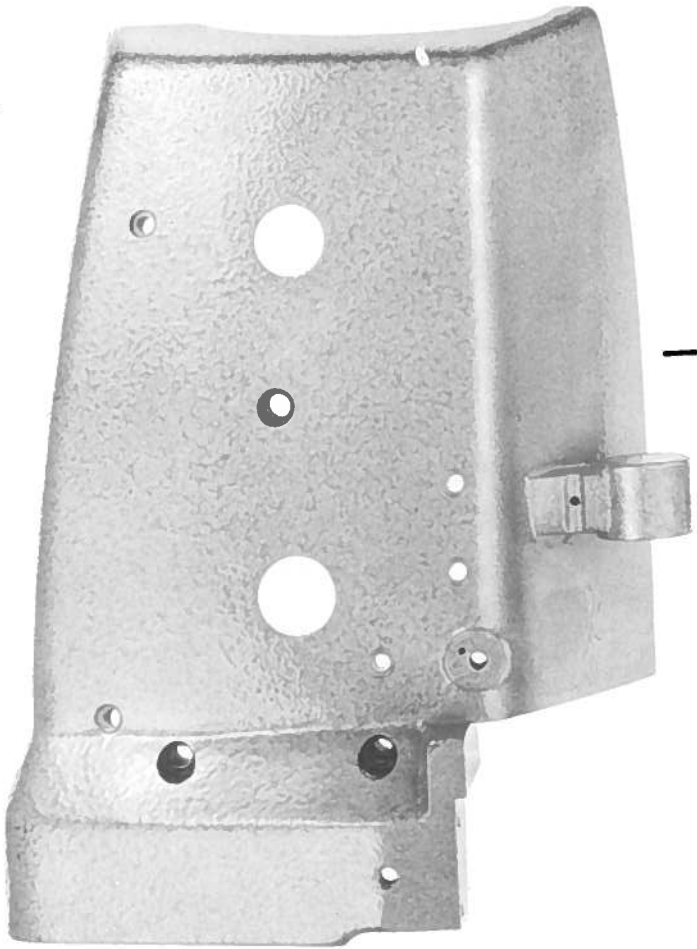
PUMP LUBRICATING MECHANISM (cont.)

<u>REF. NO.</u>	<u>PART NO.</u>	<u>DESCRIPTION</u>
1	323-635-001	Oil Distributor
2	323-600-038	Oil Distributor Screw
3	323-636-003	Oil Splash Pipe Connector
4	323-615-010	Oil Splash Pipe Connector Washer
5	323-600-062	Oil Splash Pipe Connector Screw (2 used)
6	323-600-063	Oil Splash Pipe Connector Screw
7	323-639-006 323-636-004	Worm Gear Oil Tube (Includes 323-636-004) Worm Gear Tube Connector
8	323-615-010	Worm Gear Oil Tube Connector Washer (2 used)
9	323-600-064	Worm Gear Oil Tube Connector Screw
10	323-685-201	Worm Gear Oil Tube Holder
11	323-600-057	Worm Gear Oil Tube Holder Screw
12	323-656-001	Oil Sight Window
13	323-663-003	Oil Sight Window Gasket
14	323-600-054	Oil Sight Window Screw (3 used)
15	323-568-001 323-568-002	Oil Cooling Fan (Includes 323-568-002) Oil Cooling Fan Body
16	323-600-066	Oil Cooling Fan Position Screw
17	323-600-037	Oil Cooling Fan Screw
18	323-713-001	Oil Pan (Includes 323-800-009)
19	323-800-009	Oil Filter Plate (2 used)
20	323-663-004	Oil Pan Gasket
21	323-605-001	Oil Pan Bolt (4 used)
22	323-615-008	Oil Pan Bolt Washer (4 used)
23	323-600-065	Oil Drain Cap Screw
24	323-615-202	Oil Drain Cap Screw Washer



MAIN FRAME AND MISCELLANEOUS COVERS

<u>REF. NO.</u>	<u>PART NO.</u>	<u>DESCRIPTION</u>
1	323-510-002	Machine Arm Cover
2	323-663-006	Machine Arm Cover Gasket
3	323-600-057	Machine Arm Cover Screw (3 used)
4	323-510-204	Machine Bed Cover
5	323-663-005	Machine Bed Cover Gasket
6	323-600-057	Machine Bed Cover Screw (4 used)
7	323-600-203	Oil Filler Screw
8	323-615-001	Oil Filler Screw Washer
9	323-630-201	Oil Filler Screw Nut
10	323-600-208	Oil Filler Cap Screw
	323-900-003	Cloth Plate Assembly [Includes 323-802-001, 323-630-008 (4), 323-758-001, 323-600-068, 323-600-032 (4), 323-740-006 (4), 323-615-012 (4)]
11	323-802-001	Cloth Plate
	323-630-008	Cloth Plate Nut (4 used)(not shown)
12	323-758-001	Cloth Plate Frame
13	323-740-006	Cloth Plate Frame Bracket (4 used)
14	323-600-068	Cloth Plate Frame Bracket Upper Screw (4 used)
15	323-615-012	Cloth Plate Frame Bracket Lower Screw Washer(4 used)
16	323-600-032	Cloth Plate Frame Bracket Screw (4 used)
17	323-728-001	Cloth Plate Hinge
18	323-600-056	Cloth Plate Hinge Screw (2 used)
19	323-618-007	Cloth Plate Hinge Thrust Washer
20	323-620-008	Cloth Plate Hinge Pin
21	323-630-009	Cloth Plate Hinge Pin Nut
22	323-615-013	Cloth Plate Hinge Pin Washer
23	323-600-215	Cloth Plate Hinge Pin Screw
24	323-643-003	Cloth Plate Lock Spring
25	323-600-068	Cloth Plate Lock Spring Screw
26	323-615-014	Cloth Plate Lock Spring Screw Washer
27	323-734-001	Cloth Plate Lock Spring Latch
28	323-600-069	Cloth Plate Lock Spring Latch Screw
29	323-600-069	Cloth Plate Stop Screw
30	323-630-001	Cloth Plate Stop Screw Nut
31	323-560-200	Cloth Plate Fabric Guard
32	323-600-068	Cloth Plate Fabric Guard Screw (2 used)
33	323-620-203	Fabric Guard Attaching Pin
34	323-600-043	Fabric Guard Attaching Pin Screw
35	323-634-200	Fabric Guard Attaching Pin Stop Ring
36	323-560-004	Machine Bed Oil Shield (Guard)
37	323-600-068	Machine Bed Oil Shield Screw (4 used)
38	323-510-003	Feed Eccentric Cover (Differential)
39	323-510-203	Feed Eccentric Cover (Plain)
40	323-740-007	Feed Eccentric Cover Bracket
41	323-600-021	Feed Eccentric Cover Bracket Screw (2 used)
42	323-600-210	Feed Eccentric Cover Hinge Screw
43	323-615-015	Feed Eccentric Cover Bracket Hinge Screw Washer (2 used)



14



16



17



18



19



20



21



22



24



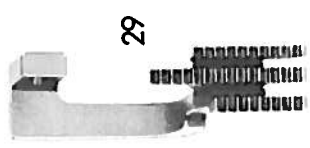
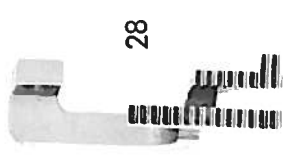
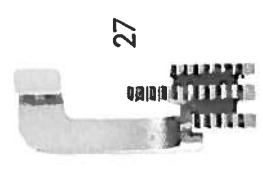
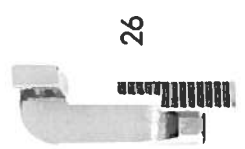
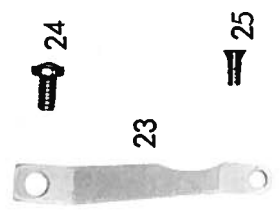
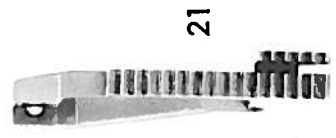
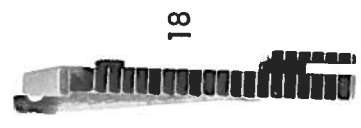
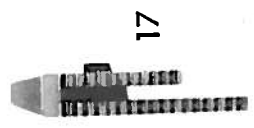
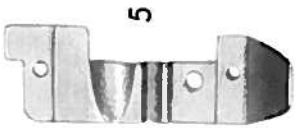
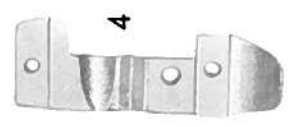
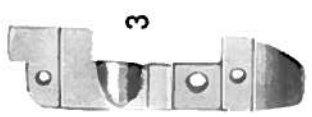
25



23

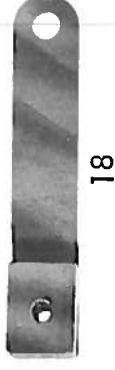
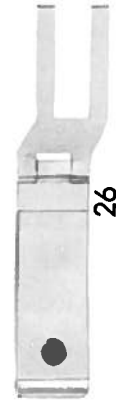
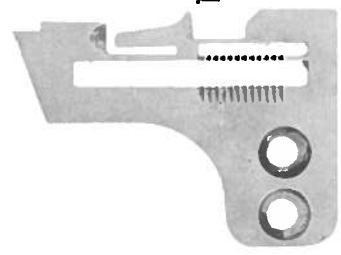
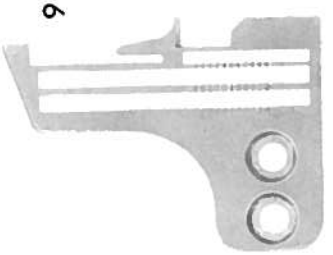
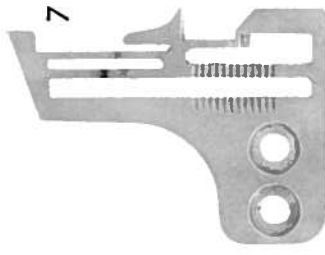
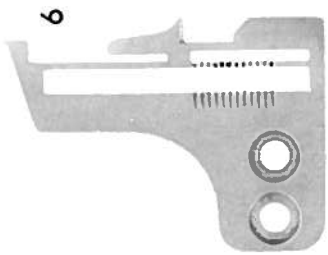
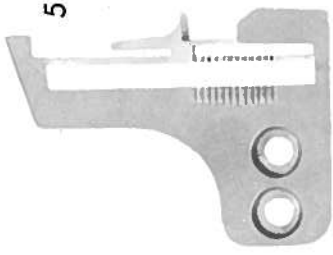
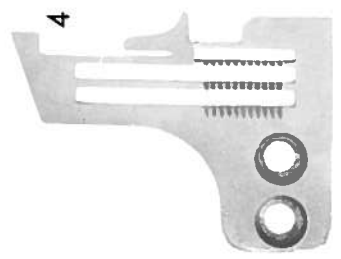
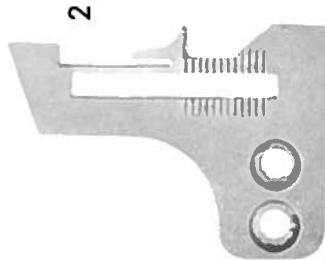
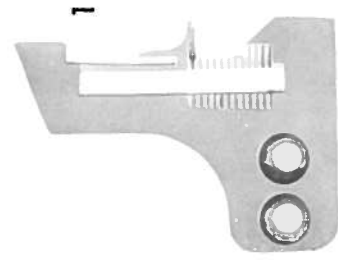
MAIN FRAME COVERS

<u>REF. NO.</u>	<u>PART NO.</u>	<u>DESCRIPTION</u>
1	323-510-200	Machine Top Cover (single needle)
2	323-600-072	Machine Top Cover Long Screw (2 used)
3	323-600-038	Machine Top Cover Short Screw
4	323-728-200	Upper Knife Cover Hinge
5	323-600-073	Upper Knife Cover Hinge Screw (2 used)
6	323-510-201	Upper Knife Cover (Includes 323-692-200)
	323-692-200	Willcox & Gibbs Name Plate
7	323-620-204	Upper Knife Cover Hinge Pin (2 used)
8	323-641-200	Upper Knife Cover Lock Spring
9	323-600-057	Upper Knife Cover Lock Spring Screw
10	323-560-202	Adjustable Waste Guard
11	323-560-203	Waste Guard (left) (Includes 323-639-007)
	323-639-007	Left Looper Thread Tube
12	323-600-074	Waste Guard Left Lower Screw
13	323-600-068	Waste Guard Left Upper Screw
14	323-560-201	Waste Guard (Right)
15	323-600-026	Waste Guard (Right) Screw (2 used)
16	323-510-006	Front Cover
17	323-620-011	Front Cover Hinge Pin
18	323-728-003	Front Cover Hinge
19	323-600-068	Front Cover Hinge Pin Screw (2 used)
20	323-643-005	Front Cover Lock Spring
21	323-600-068	Front Cover Lock Spring Screw
22	323-800-010	Looper Thread Plate Complete [Includes 323-758-002, 323-628-001(2), 323-615-016, 323-639-008]
	323-758-002	Looper Thread Plate Extension
	323-628-001	Looper Thread Plate Extension Rivet (2 used)
	323-615-016	Looper Thread Plate Extension Rivet Washer
	323-630-008	Thread Tube (Right Looper)
23	323-600-068	Looper Thread Plate Complete Screw (3 used)
24	323-510-007	Oil Cooler Cover
25	323-600-072	Oil Cooler Cover Screw (3 used)



PRESSER FEET AND FEEDS

<u>REF. NO.</u>	<u>PART NO.</u>	<u>DESCRIPTION</u>
1	323-820-005	Presser Foot
2	323-820-006	Presser Foot
3	323-820-007	Presser Foot
4	323-820-008	Presser Foot
5	323-820-009	Presser Foot
6	323-820-010	Presser Foot
7	323-863-006	Presser Foot Finger
8	323-863-007	Presser Foot Finger
9	323-863-008	Presser Foot Finger
10	323-863-201	Presser Foot Finger
11	323-600-050	Presser Foot Finger Screw
	323-643-001	Presser Foot Hinge Spring
12	323-854-001	Presser Foot Uncurler
13	323-600-048	Presser Foot Uncurler Screw
14	323-560-002	Presser Foot Fabric Guard
15	323-600-202	Presser Foot Fabric Guard Screw
16	323-830-200	Main Feed Dog
17	323-830-014	Main Feed Dog
18	323-830-017	Main Feed Dog (Includes 323-756-001, 323-600-016, 323-600-214)
19	323-830-001	Main Feed Dog
20	323-830-020	Main Feed Dog
21	323-830-022	Main Feed Dog (Includes 323-756-001, 323-600-016, 323-600-214)
22	323-830-023	Main Feed Dog (Includes 323-756-001, 323-600-016, 323-600-214)
23	323-756-001	Feed Support
24	323-600-016	Feed Support Back Screw
25	323-600-214	Feed Support Front Screw
26	323-830-201	Differential Feed Dog
27	323-830-015	Differential Feed Dog
28	323-830-019	Differential Feed Dog
29	323-830-021	Differential Feed Dog
30	323-830-010	Auxiliary Feed Dog
31	323-830-016	Auxiliary Feed Dog
32	323-830-018	Auxiliary Feed Dog
	323-830-012	Main Feed Dog (not shown)
	323-830-013	Differential Feed Dog (not shown)



NEEDLE PLATES

<u>REF. NO.</u>	<u>PART NO.</u>	<u>DESCRIPTION</u>
1	323-801-012	Needle Plate 1/16" gauge
2	323-801-012	Needle Plate 3/32" gauge
3	323-801-014	Needle Plate 1/8 " gauge
4	323-801-015	Needle Plate 5/32" gauge
5	323-801-016	Needle Plate 1/8 " gauge
6	323-801-017	Needle Plate 5/32" gauge
7	323-801-018	Needle Plate 3/32" gauge
8	323-801-019	Needle Plate 5/32" gauge
9	323-801-020	Needle Plate 1/8 " gauge
10	323-801-021	Needle Plate 5/32" gauge
11	323-801-022	Needle Plate 1/8 " gauge
12	323-801-023	Needle Plate 5/32" gauge
13	323-801-024	Needle Plate 3/32" gauge
14	323-801-025	Needle Plate 5/64" x 5/32" gauge
15	323-600-014	Needle Plate Screw (2 used)

SUPPLEMENTARY PARTS AVAILABLE

16	323-600-032	Edge Guide Screw
17	323-740-011	Edge Guide Bracket
18	323-740-012	Edge Guide Arm Bracket
19	323-600-079	Edge Guide Arm Stud Screw
20	323-615-015	Edge Guide Arm Stud Spring Washer
21	323-630-010	Edge Guide Arm Stud Screw Nut
22	323-850-013	Edge Guide
23	323-600-032	Edge Guide Screw
24	323-615-018	Edge Guide Screw Washer
	323-850-012	Swing Out Edge Guide Complete (Includes 323-740-011, 323-600-032(3), 323-740-012, 323-600-079, 323-615-015, 323-630-010, 323-850-013, 323-615-018(not shown))
25	323-505-002	Hemming Attachment Base Complete
26	323-400-001	Hem Guide Folder
27	323-600-074	Hem Guide Folder Screw
28	323-615-017	Hem Guide Folder Screw Washer



13



10



11



12



5



6



7



8



9



1



2



3



4

TWO NEEDLE MACHINE PARTS

<u>REF. NO.</u>	<u>PART NO.</u>	<u>DESCRIPTION</u>
1	323-502-200	Needle Driving Arm
2	323-683-200	Needle Clamp
3	323-600-201	Needle Clamp Screw
4	323-615-200	Needle Separator
	323-630-001	Needle Clamp Screw Stud Nut
5	323-860-008	Needle Thread Eyelet
6	323-740-010	Needle Tension Bracket
7	323-600-075	Needle Tension Bracket Screw
8	323-900-200	Needle Tension Complete (Includes 323-630-200, 323-780-002, 323-642-001, 323-780-002, 323-613-001(2), 323-604-201, 323-615-017)
	323-642-001	Tension Spring for Needle Thread
9	323-630-001	Tension Stud Nut
10	323-561-007	Needle Guard (front)
11	323-561-008	Needle Guard (back)
12	323-530-008	Right Looper Lever
13	323-510-202	Machine Top Cover



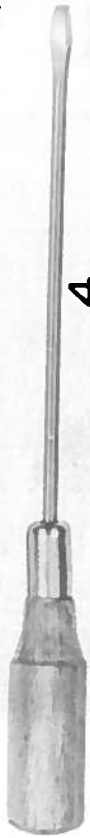
1



2



3



4



5



8



9



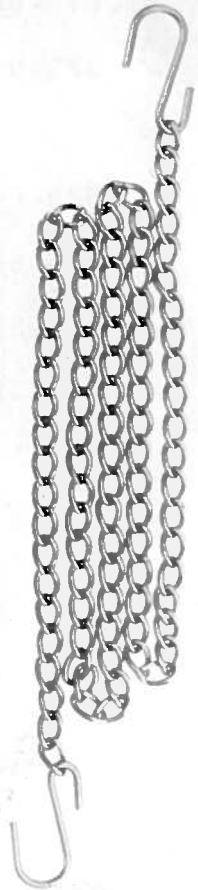
10



11



6



7



14



13



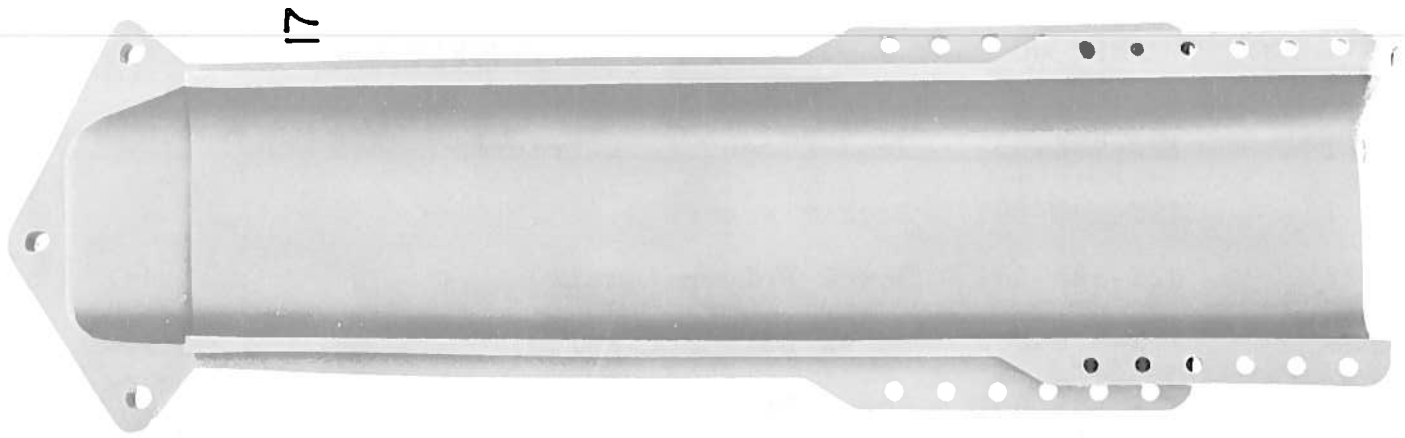
12



15

ACCESSORIES

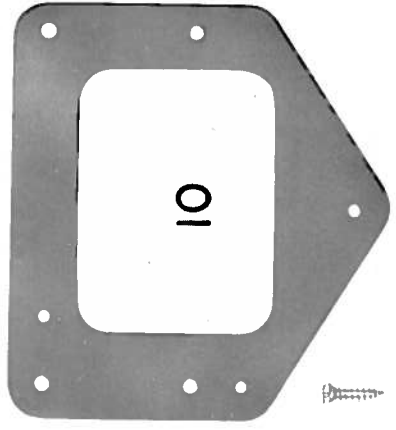
<u>REF. NO.</u>	<u>PART NO.</u>	<u>DESCRIPTION</u>
1	323-945-001	Feed Eccentric Extractor
2	323-880-001	Socket Wrench
3	323-885-003	Screw Driver (small)
4	323-885-002	Screw Driver (medium)
5	323-885-001	Screw Driver (large)
6	323-533-001	Treadle
7	323-732-001	Treadle Chain
8	323-880-002	Wrench #1
9	323-880-003	Wrench #3
10	323-880-004	Wrench #4
11	323-886-001	Tweezers
12	323-660-200	Threading Wire
13	323-945-003	Oil Funnel
14	323-659-200	Oil Bottle
15	323-945-002	Can of Oil
	323-900-203	Tool Kit (includes 323-880-200, 323-880-201, 323-880-202, 323-880-203, 323-880-204, 323-882-800)
	323-880-200	Wrench, 5mm. Double End
	323-880-201	Wrench, 7mm. Double End
	323-880-202	Wrench, 9.5mm, Double End, Closed
	323-880-203	T-Wrench, 7mm.
	323-880-204	T-Wrench, 10mm.
	323-882-800	Timing Gauge



12



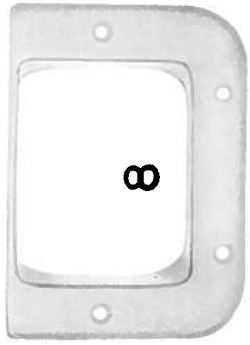
15



10



11



8



9



7



3



6



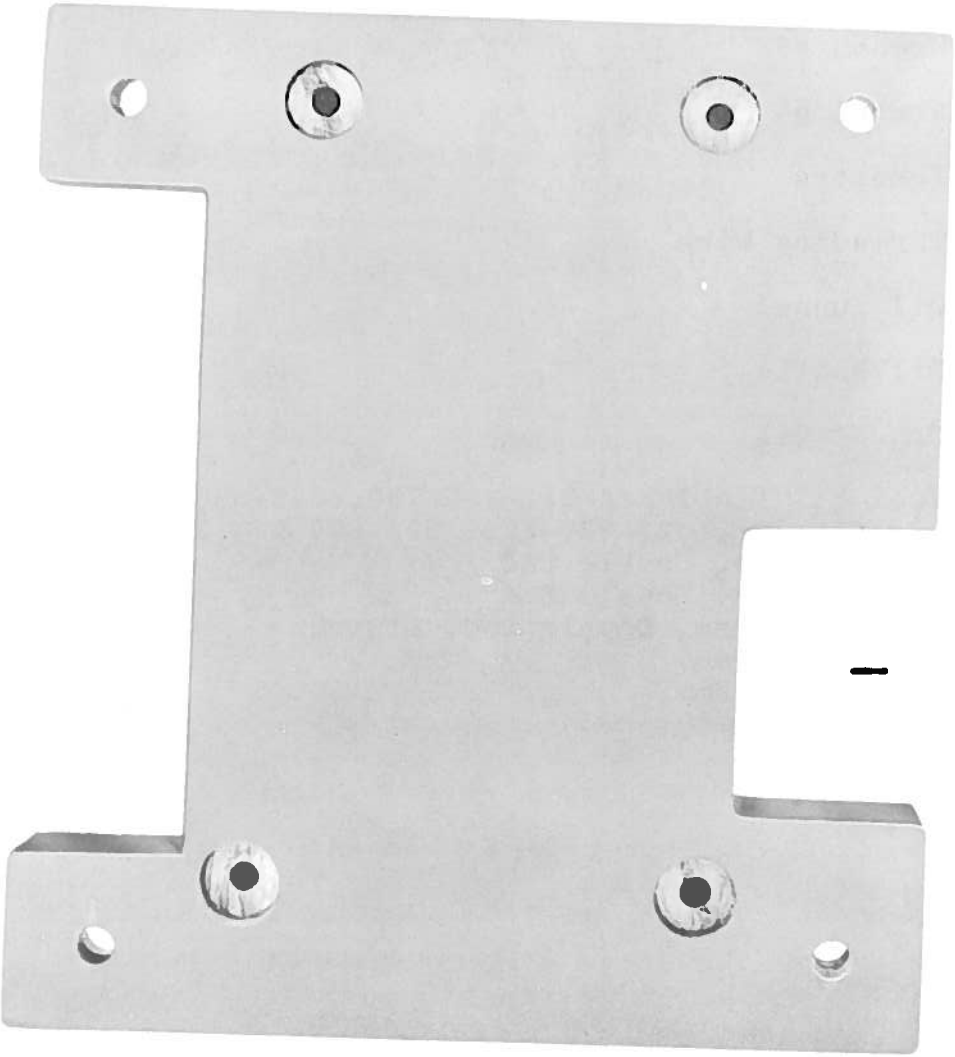
5



4



2

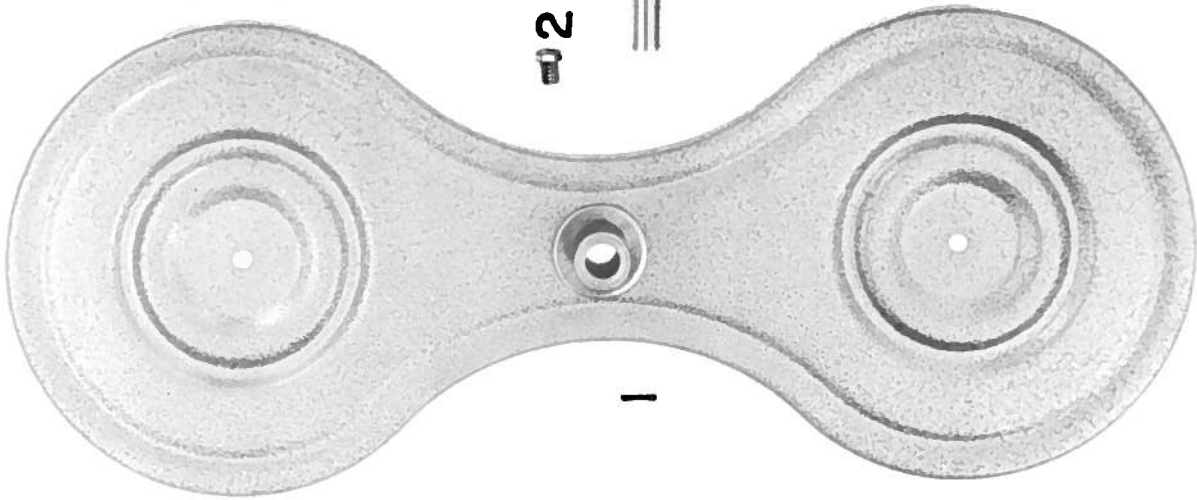


1

12 13 14 15 16

MOUNTING ACCESSORIES

<u>REF. NO.</u>	<u>PART NO.</u>	<u>DESCRIPTION</u>
1	323-945-200	Wood Base
2		
2	323-605-200	Wood Base Bolt (4 used)
3	323-945-201	Rubber Base Mount for Wood Base (8 used)
4	323-617-201	Wood Base Bolt Lock Washer (4 used)
5	323-615-203	Wood Base Bolt Washer (4 used)
6	323-630-204	Wood Base Bolt Nut (4 used)
7	323-945-202	Rubber Machine Mount (4 used)
8	323-740-013	Waste Chute Top
9	323-600-076	Waste Chute Top Wood Screw (4 used)
10	323-740-202	Waste Chute Bracket
11	323-600-080	Waste Chute Bracket Wood Screw (4 used)
12	323-600-057	Waste Chute Attaching Screw (3 used)
13	323-615-002	Waste Chute Attaching Screw Washer (3 used)
14	323-600-060	Waste Chute Joining Screw (4 used)
15	323-630-001	Waste Chute Joining Screw Nut (4 used)
16	323-615-002	Waste Chute Joining Screw Washer (8 used)
17	323-774-001	Waste Chute Top (Upper) (Depressed Mount)
18	323-774-200	Waste Chute Bottom (Lower) (Depressed Mount)



1



3



4



5



6



7



2



8



9



10



11



12



13



14



15



16



17



18



19



20

THREAD STAND

<u>REF. NO.</u>	<u>PART NO.</u>	<u>DESCRIPTION</u>
1	323-685-204	Cone Holder for two thread
2	323-600-218	Cone Holder Screw
3	323-685-205	Cone Holder for one thread
4	323-600-218	Cone Holder Screw (2 used)
5	323-505-200	Thread Stand Base
6	323-600-219	Thread Stand Base Wood Screw (3 used)
7	323-535-200	Thread Stand Top Rod
8	323-535-201	Thread Stand Bottom Rod
9	323-630-205	Thread Stand Thumb Nut
10	323-617-202	Thread Stand Lock Washer
11	323-945-203	Thread Eyelet Separator
12	323-945-204	Separator Positioner
13	323-630-206	Thread Stand Top Rod Nut
14	323-630-207	Thread Stand Bottom Rod Nut
15	323-860-201	Thread Eyelet (3 or 4 used)
16	323-643-200	Spool Pin Eyelet Spring (3 or 4 used)
17	323-620-205	Spool Pin (3 or 4 used)
18	323-615-204	Spool Pin Washer (3 or 4 used)
19	323-617-203	Spool Pin Lock Washer (3 or 4 used)
20	323-630-208	Spool Pin Nut (3 or 4 used)
	323-940-002	Thread Stand Complete - four thread
	323-940-001	Thread Stand Complete - three thread

ORGANIZATION CHART FOR TYPE 500/I MACHINES

STYLE	GAUGE	NEEDLE PLATE	PRESSER FOOT	CHAINING FINGER	FABRIC GUARD	MAIN FEED	DIFF. FEED	AUX. FEED
504/I-1	1/16" 3/32"	323-801-012 323-801-013	323-820-005	323-863-006	---	323-830-200	323-830-013	323-830-010
504/I-2	1/16" 3/32"	323-801-012 323-801-013	323-820-005	323-863-006	---	323-830-200	323-830-013	323-830-010
504/I-3	1/8" 5/32"	323-801-014 323-801-015	323-820-006	323-863-007	323-854-001	323-830-014	323-830-015	323-830-016
503/I-4	1/8" 5/32"	323-801-016 323-801-017	323-820-007	323-863-007	323-854-001	323-830-017	---	323-830-018
504/I-5	3/32" 5/32"	323-801-018 323-801-019	323-820-008	323-863-007	323-854-001	323-830-001	323-830-019	323-830-016
504/I-6	3/32" 5/32"	323-801-018 323-801-019	323-820-008	323-863-007	323-854-001	323-830-001	323-830-019	323-830-016
504/I-7	1/8" 5/32"	323-801-020 323-801-021	323-820-009	323-863-007	323-854-001	323-830-020	323-830-021	323-830-016
503/I-8	1/8" 5/32"	323-801-022 323-801-023	323-820-010	323-863-007	323-854-001	323-830-022	---	---
504/I-9	3/32"	323-801-024	323-820-005	323-863-008	---	323-830-023	---	323-830-010
504/I-10	1/8" 5/32"							---
514/I-11	1/16" x 5/32"	323-801-025	323-820-009	323-863-201	323-854-001	323-830-020	323-830-021	323-830-016

STYLE	UPPER KNIFE	LOWER KNIFE	RIGHT LOOPER	LEFT LOOPER	STITCH CAM MAIN FEED	STITCH CAM DIFF. FEED	EXTRA CAMS	ATTACHMENT
504/I-1	323-870-201	323-870-203	323-810-001	323-810-002	323-580-012	323-580-012	323-580-010 323-580-014	
504/I-2	323-870-201	323-870-203	323-810-001	323-810-002	323-580-010	323-580-014	323-580-012 323-580-016	
504/I-3	323-870-200	323-870-202	323-810-001	323-810-002	323-580-010	323-580-010	323-580-008 323-580-012	
503/I-4	323-870-200	323-870-203	323-810-003	323-810-002	323-580-006	---	323-580-005	323-850-012
504/I-5	323-870-200	323-870-202	323-810-001	323-810-002	323-580-010	323-580-010	323-580-008 323-580-012	
504/I-6	323-870-200	323-870-203	323-810-001	323-810-002	323-580-008	323-580-012	323-580-010 323-580-014	
504/I-7	323-870-200	323-870-202	323-810-001	323-810-002	323-580-010	323-580-010	323-580-008 323-580-012	
503/I-8	323-870-200	323-870-203	323-810-003	323-810-002	323-580-006	---	323-580-005	323-850-012
504/I-9	323-870-201	323-870-203	323-810-001	323-810-002	323-580-010	---	323-580-008	
504/I-10	323-870-201	323-870-202	323-810-001	323-810-002	323-580-008	323-580-008		
514/I-11	323-870-200	323-870-202	323-810-001	323-810-002	323-580-010	323-580-010	323-580-008 323-580-012	

STITCH CAM # 323-580-004

Stitch Cam or Feed Eccentric can be supplied in the following sizes:

- 4, 5, 6, 7, 8, 9, 10, 12, 13, 14, 16, 18, 20, 22, 24, 26, 28, 30, 35, 40, 50, 65, 70, 80.

