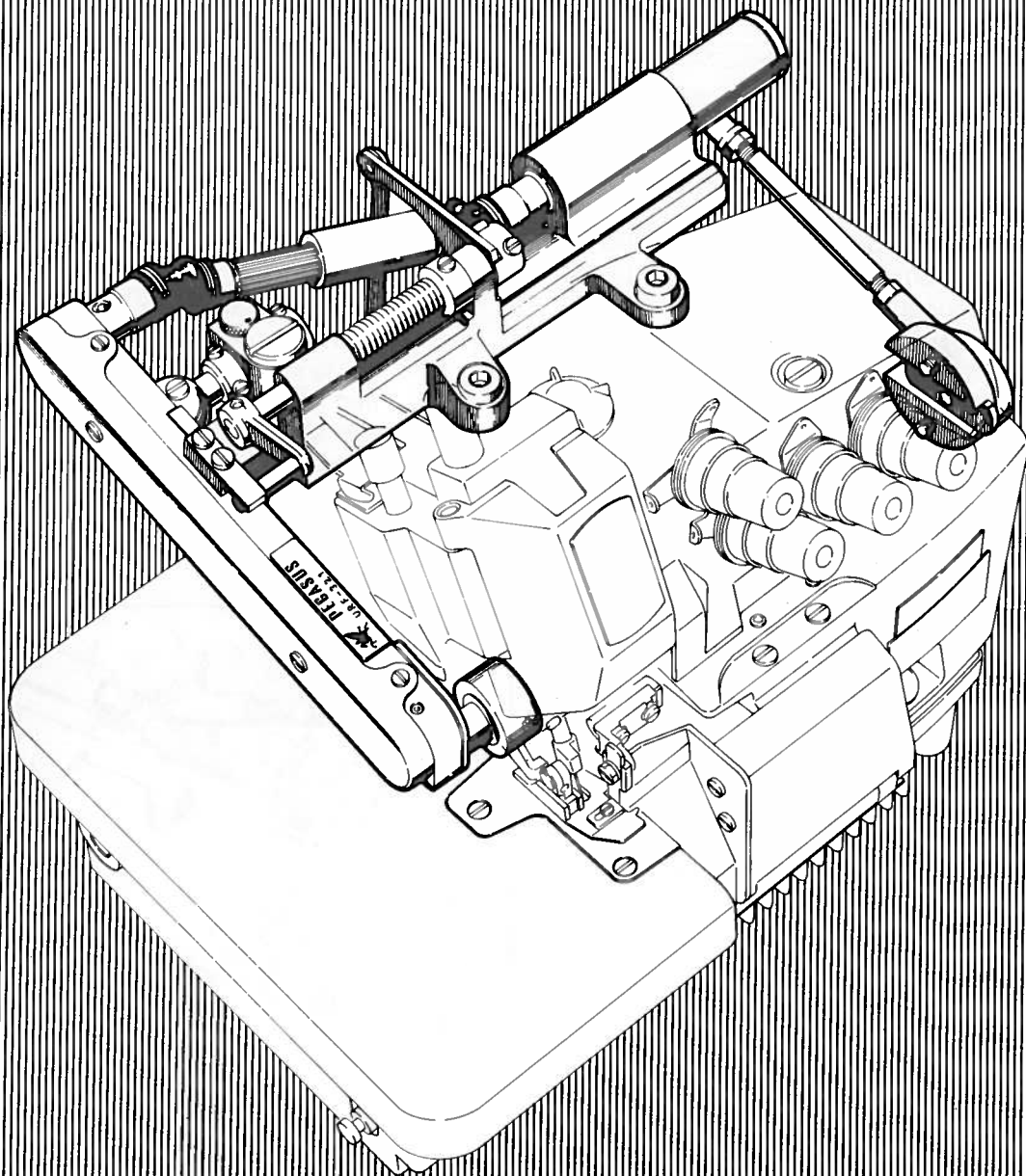


Cat.No.8240 (023-410-039)

SYNCHRONIZED TOP FEED PULLER

URF DEVICE

FOR THE NEW WILLCOX & GIBBS -4 SERIES



WILLCOX & GIBBS, inc.

TABLE OF CONTENTS	PAGE
In ordering	1
Features	1
Recommended operations	1
Installation	2
Adjusting the feed amount of roller	2
For rough adjustment	2
For fine adjustment	2
Lubrication	2
Adjusting the position of feed roller	3
Sidewise setting	3
Front to rear setting	3
Adjusting the pressure of feed roller	4
Position of Roller Feed Frame when it is raised	4
PARTS LIST	5-10
(1) URF-321	5-6
(2) URF-321	7-8
Specific parts/KSL-321	9-10
Numerical index of parts	11-12

FEATURES

The feed mechanism of the URF-device is driven by the machine pulley and its movement is synchronized with that of the feed dogs. In addition, the Feed Roller ① can keep the same feed amount with the feed dogs when finely adjusted.

As the feed dogs feed the material, Feed Roller ① also feeds at the same time and in the same feed amount of the feed dogs. When the feed dogs are idle under Needle Plate, Feed Roller ① is also in a stop. URF-321 repeats this movement as the machine runs.

This feature can bring the result that there would occur no ply shift and no seam puckering when sewing two plies. Because the machine equipped with URF-321 can feed the upper and lower plies in the same timing and in the same amount.

IN ORDERING

URF-321, the Synchronized Top Feed Puller, is supplied with machine only. In ordering, please specify the required machine type number as well as the URF device, e.g., 515-4-26/URF. Note: The lift of Roller ① is 5.5mm at maximum.

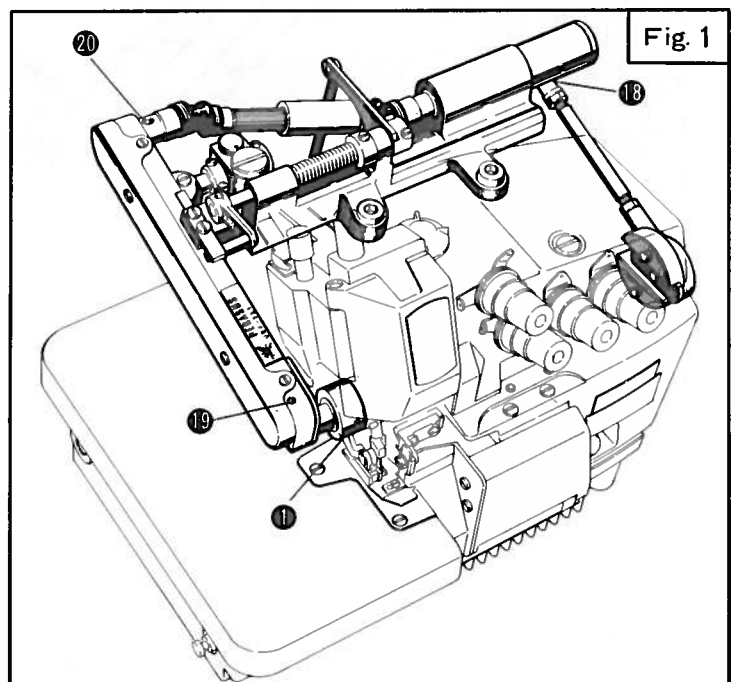
RECOMMENDED OPERATIONS

- 1) Side seaming on Men's dress shirts, Ladies' blouses, etc.
- 2) Attaching Yoke on Men's dress shirts, etc.
- 3) Seaming on other fabrics which have a tendency to cause ply shift and seam puckering.
- 4) Available as an auxiliary top feeder on piping operation for knit and woven materials.

LUBRICATION

Before morning start, lubricate Ball Joint ⑬ and Oil Holes ⑭ ⑮. Caution! Lack of lubrication may cause accidental seizure of parts.

Fig. 1



INSTALLATION

Fig. 2, 3, 4, 5

The URF-device was tuned up with the machine at the factory. Then they were separated, packed in each carton and delivered in the same shipment. So install the URF device on the machine as follows.

1. Mount Base ② on the machine with Screws ④ and Washers ③ so that the front edge 'A' of Feed Roller ⑰ is vertical to the feed slots 'B' of Needle Plate.
2. Make sure the followings are correct.
 - * Roller ⑰ does not interfere Presser Foot.
 - * Frame Cover ⑱ is parallel and approximately 4mm apart from Machine Arm (Left).
 - * Roller ⑰ can be lifted 5.5mm up or more.
 - * Roller ⑰ is even and flat on Cloth Plate.
 If necessary, move the URF device a little and adjust the above.
3. Tighten Screws ④ securely.
4. Set Nut ⑦ and Washer ⑥ at the center of the long groove of Lever ⑧.
5. Put the drive belt in Machine Pulley.
6. Set Washer ⑩ and Screw ⑨ in the groove end of Eccentric ⑫ (Fig. 4). See ADJUSTING THE FEED AMOUNT OF ROLLER ⑰ below.
7. Set Lever ⑮ with Screws ⑬ for Foot Lift Lever ⑭.
8. Install the machine in the sewing position.

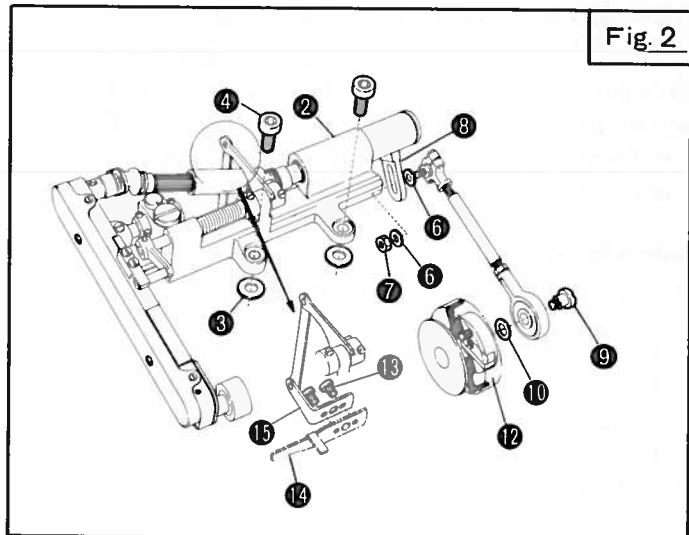


Fig. 2

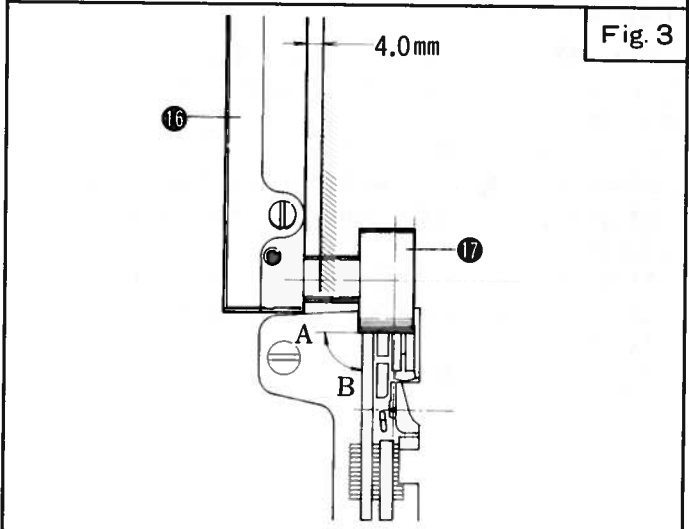


Fig. 3

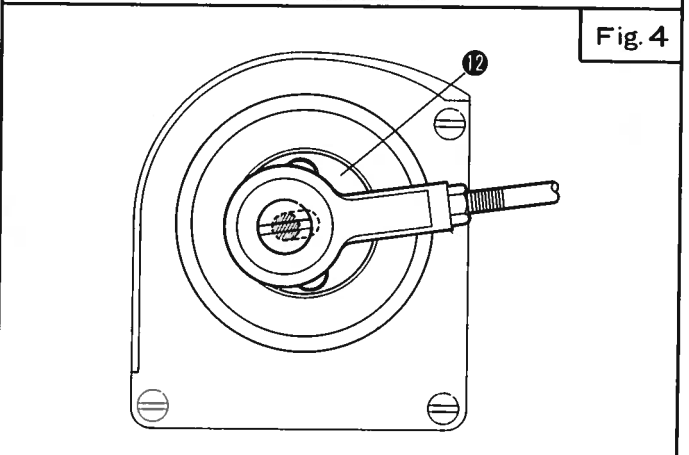


Fig. 4

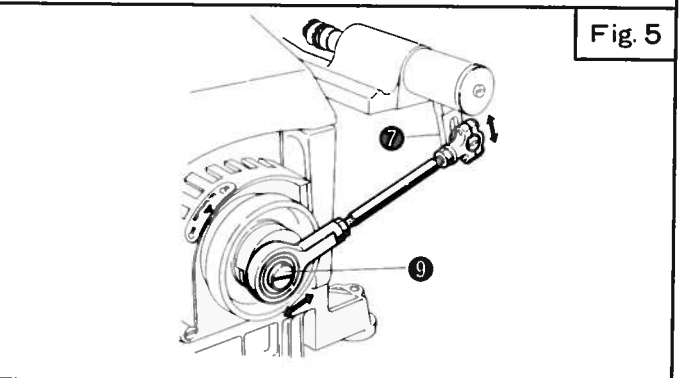


Fig. 5

ADJUSTING THE FEED AMOUNT OF ROLLER ⑰

Fig. 5

Sew the material and adjust the feed amount of Roller ⑰.

The feed amount of Roller ⑰ should be the same as that of the feed dogs so that the upper and lower plies of the material can be fed in the same amount. This adjustment can be made; roughly by shifting the position of Screw ⑨ and finely by shifting the position of Nut ⑦.

For rough adjustment

1. Set Nut ⑦ at the center of the long groove of Lever ⑧.
2. Loosen Screw ⑨. Move it inward for less feed amount of Roller ⑰, and outward for more feed amount.
3. Tighten Screw ⑨ when Roller ⑰ is approximately in the same feed amount with the feed dogs.

For fine adjustment

1. Loosen Nut ⑦. Raise it for more feed amount of Roller ⑰ and lower it for less feed amount.
2. After the feed amount is finely adjusted, tighten Nut ⑦.

ADJUSTING THE POSITION OF FEED ROLLER

Fig. 6, 7, 8

This setting is correct at the factory and requires no further adjustment unless Feed Roller ④ has been moved from its original position for any reason.

Sidewise setting

Roller ④ should align with Presser Foot.

1. Loosen Screw ① .
2. Move Base ③ as required.

Make sure Base ③ is parallel and approximately 4.0mm apart from Machine Arm (Left).

3. Tighten Screw ① .

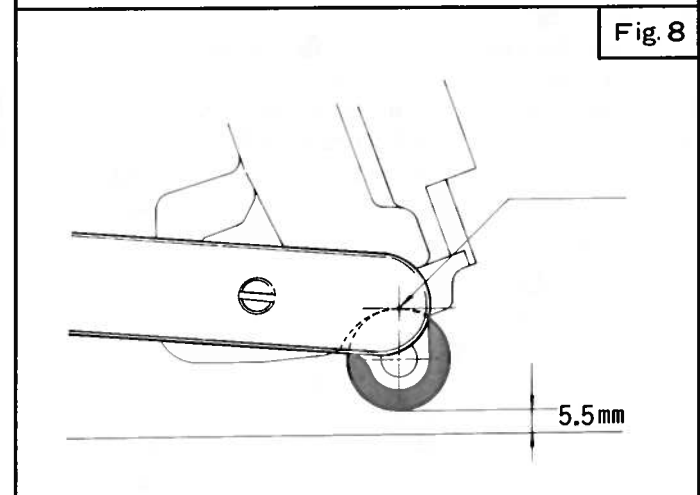
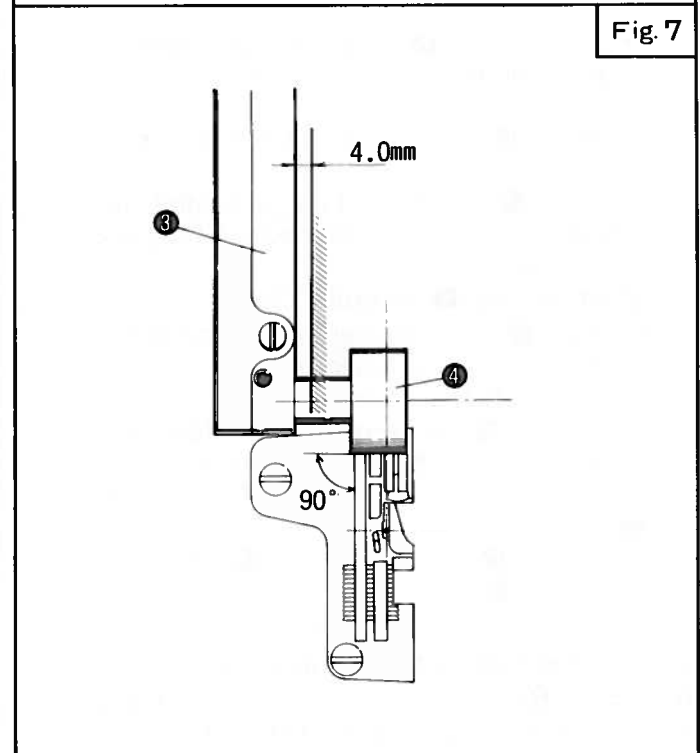
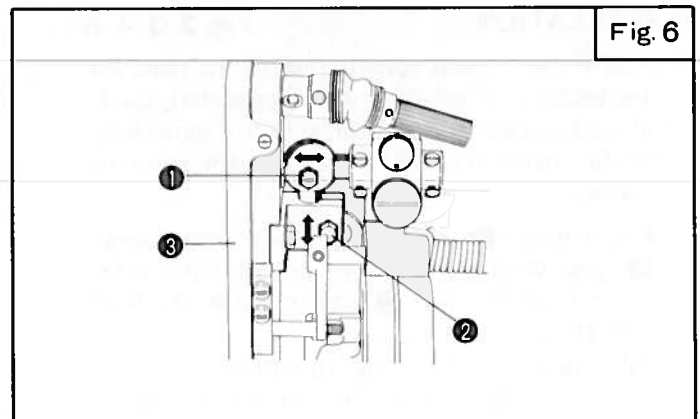
Front to rear setting

Roller ④ should be even and flat on Cloth Plate, and a lift of 5.5mm should also be obtained when it is lifted up.

1. Loosen Screw ② .
2. Move Base ③ so that Roller is in the middle of the round cut portion of Machine Arm (Left).

Make sure Roller ④ is even and flat on Cloth Plate and does not interfere with Presser Foot.

3. Tighten Screw ② .



ADJUSTING THE PRESSURE OF FEED ROLLER

Fig. 9, 10

The pressure of Feed Roller on the material should be just enough to feed material and obtain proper stitch formation.

1. Pull Pin 7 up and swing Base 3 to the left.
2. Loosen Screws 12 and Screws 13
3. With Spring 'a' hooked on the Hinge Frame, set Pin 14 so that a proper pressure is obtained. Tighten Screws 13
4. Placing Pin 14 on Base 3, turn Collar 15 and tighten Screws 12. When tightening Screws 12, eliminate the sidewise play of Lever 16.
5. Replace Base 3 and Pin 7 in position.

POSITION OF BASE 3 WHEN IT IS RAISED UP.

Fig. 9, 11

Rubber 'C' is filled with grease. When Base 3 is raised up, Rubber 'C' should not rub on Hinge 9. This is to keep Rubber 'C' from wear by rubbing. Screw 6 for Collar 10 acts as a stopper of Base 3 from raising up. If necessary, reset Collar 10 so that Rubber 'C' will not rub on Hinge 9.

1. Release Pin 7 and swing Base 3 to the left.
2. Loosen Screws 5 and 6.
3. With Base 3 high, making sure Rubber 'C' not touching Hinge 9, turn Collar 10 until Screw 6 is stopped by Pin 11.
4. Tighten Screws 5 and 6. When tightening these screws, avoid any excess sidewise play but assure no binding when Base 3 is moved up and down.

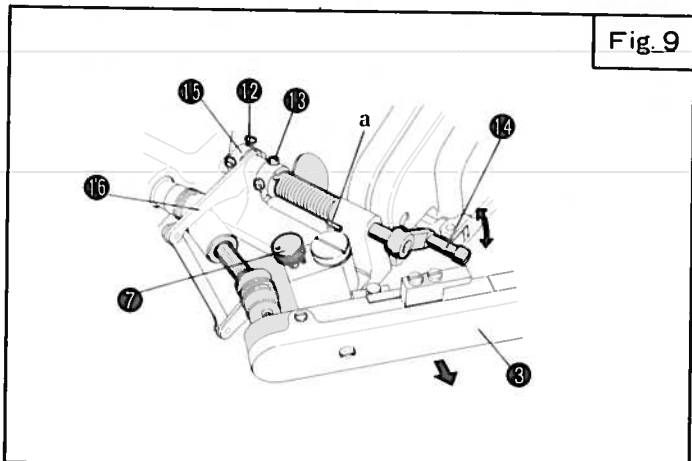


Fig. 9

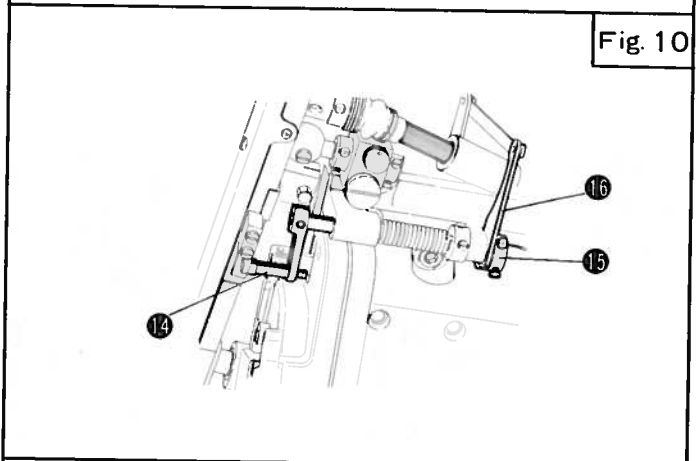


Fig. 10

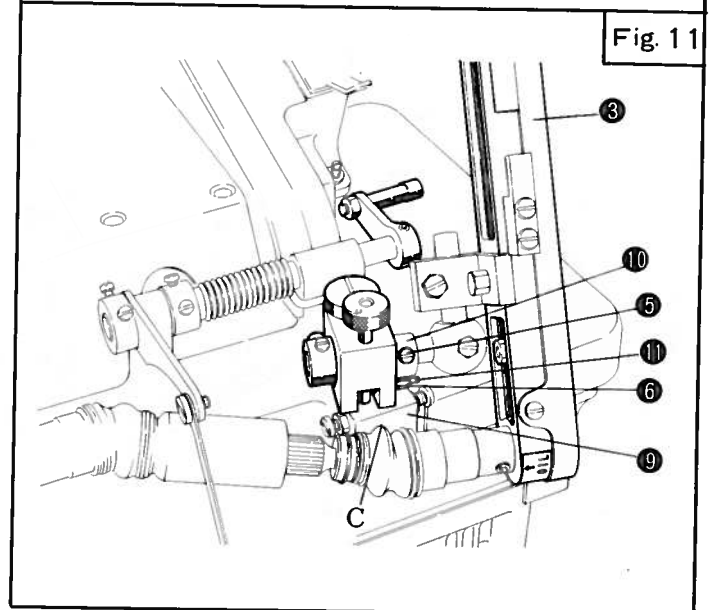
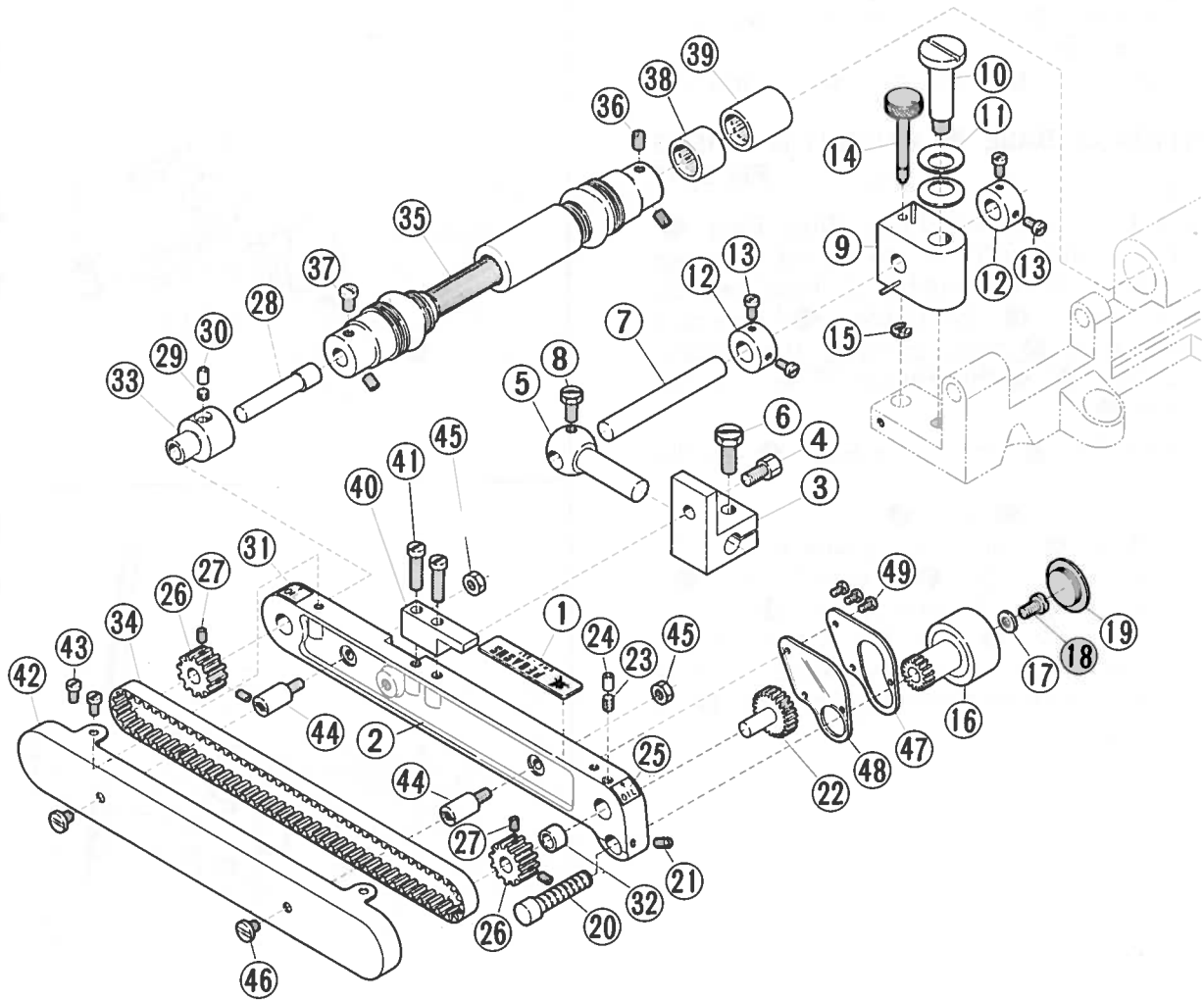
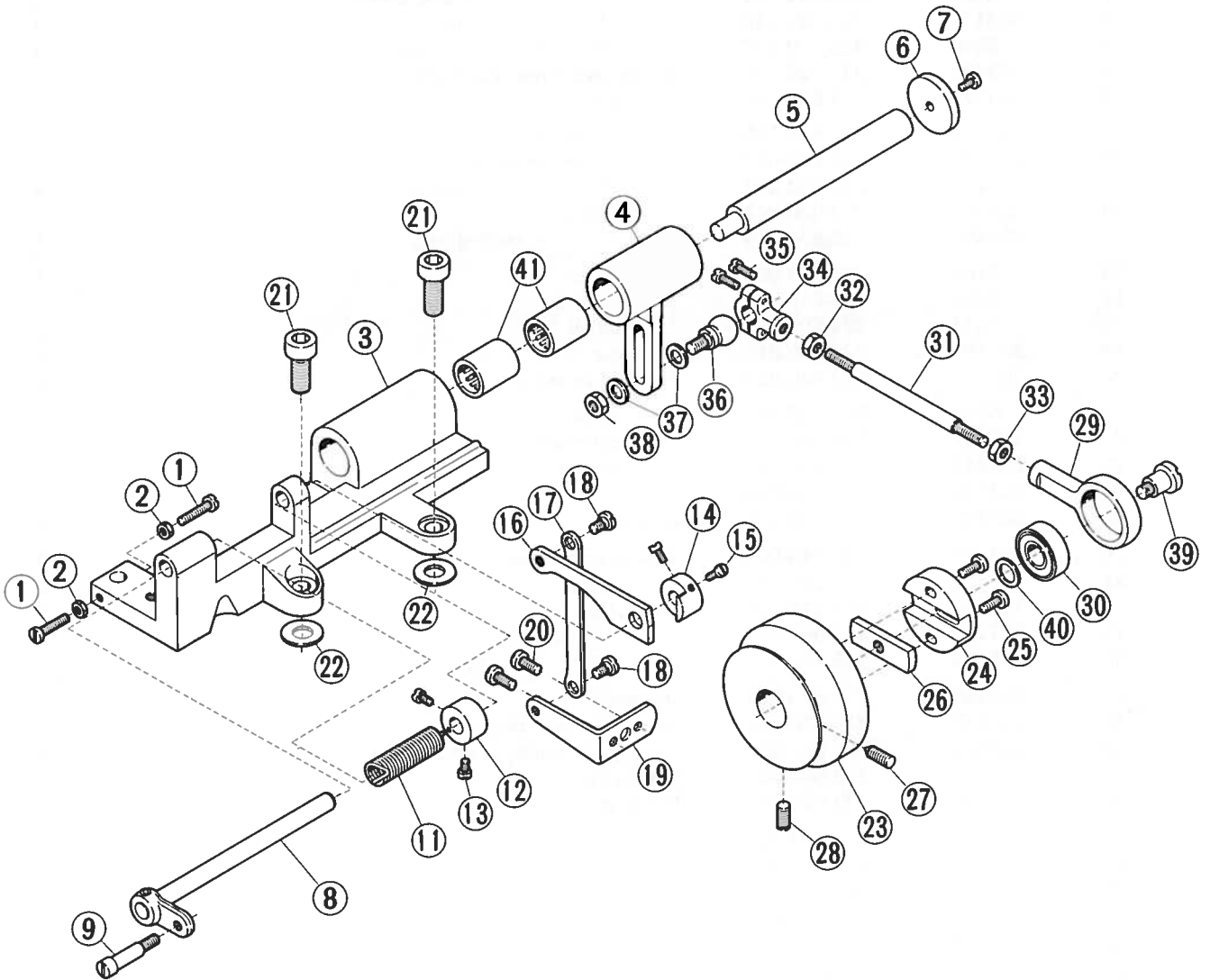


Fig. 11



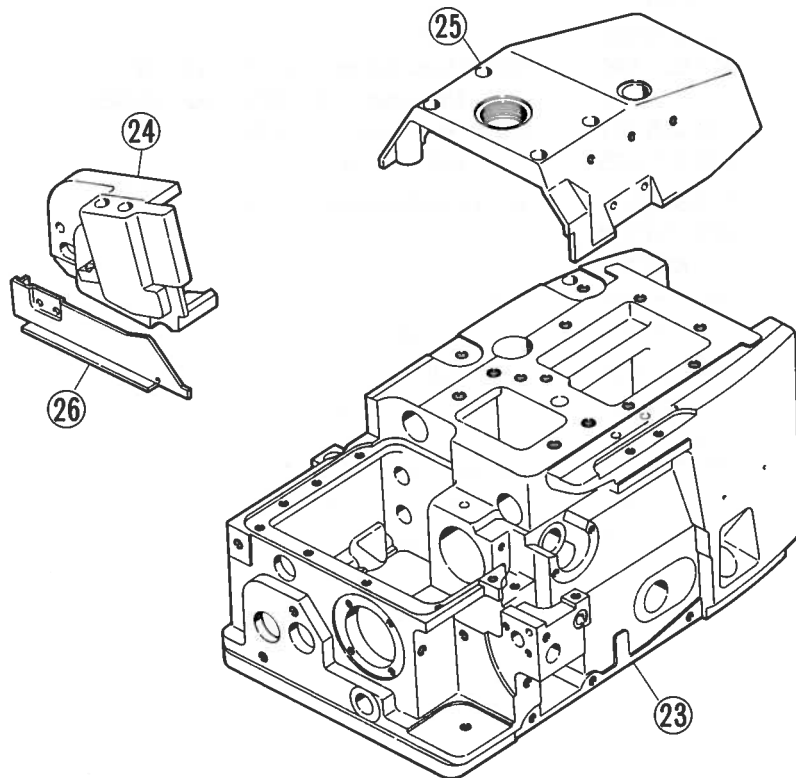
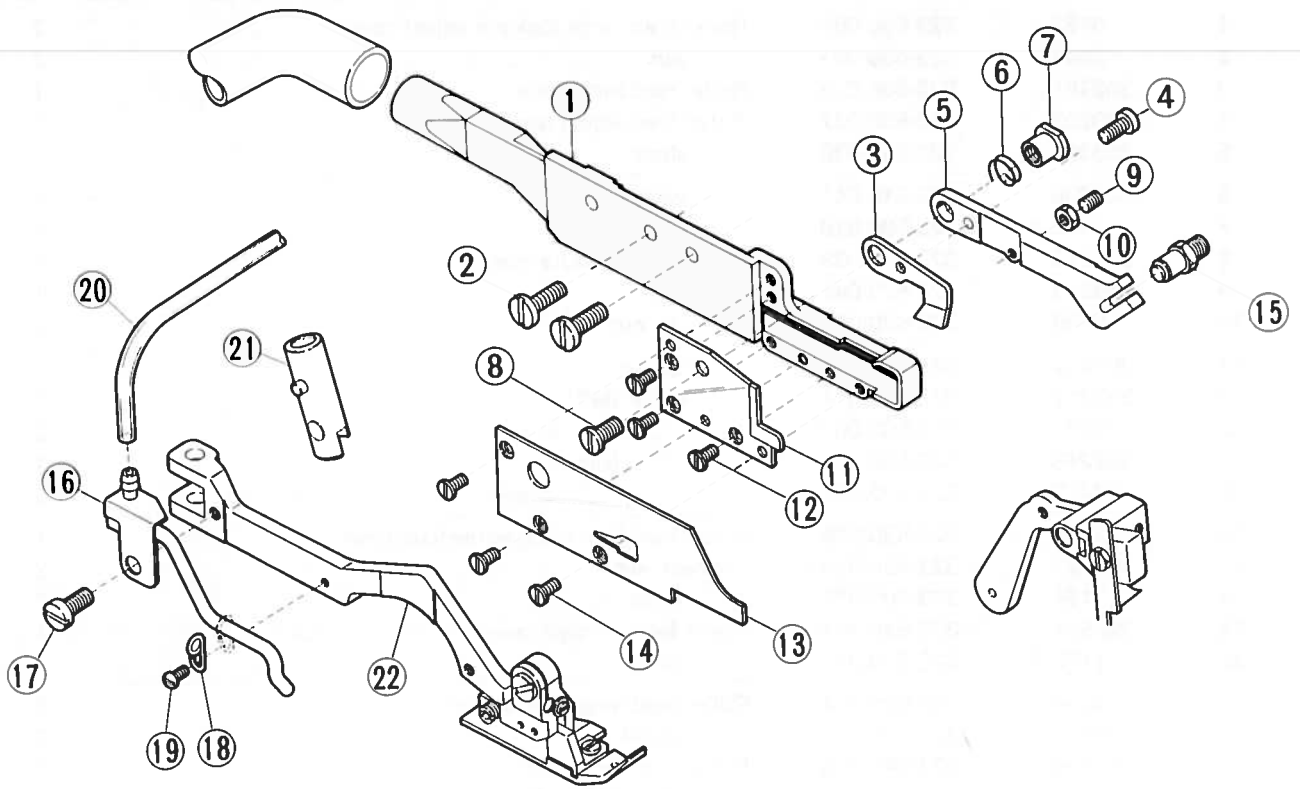
(1) URF-320

REF. NO.	PART NO.	NEW PRODUCT CODE NO.	DESCRIPTION	QT.
	303480	323-900-065	URF-321 head complete	1
	303481	323-895-001	Feed roller drive mechanism (Includes parts of Ref. Nos. 1-48)	1
1	303473	323-692-042	Name plate	1
2	303521	323-508-021	Roller feed frame	1
3	303522	323-728-015	hinge	1
4	5274	323-600-263	" screw	1
5	303175	323-608-001	" ball stud	1
6	5266	323-600-265	" " " clamp screw	1
7	303176	323-620-045	" " " pin	1
8	5048	323-600-028	" " " screw	1
9	303493	323-728-016	Roller feed hinge, complete	1
10	303178	323-620-046	pin	1
11	303179	323-640-032	" spring	2
12	201029	323-618-002	" thrust collar	2
13	2237	323-600-067	" " " screw	4
14	303492	323-620-047	lock pin	1
15	200555	323-634-004	" " retaining ring	1
16	303182	323-720-002	Feed roller	1
17	205097	323-615-026	washer	1
18	5317	323-600-355	screw	1
19	303185	323-780-015	cap	1
20	303186	323-540-037	Feed roller shaft	1
21	5292	323-600-341	screw	1
22	303187	323-764-005	Feed roller gear	1
23	202047	323-653-205	oil felt	1
24	303485	323-780-016	" " cap	1
25	303486	323-690-001	Oil mark	1
26	303191	323-546-005	Timing belt pulley	2
27	5408	323-600-129	screw	4
28	303192	323-540-038	shaft	1
29	303487	323-653-021	" oil felt	1
30	303485	323-780-016	" " " cap	1
31	303486	323-690-001	Oil mark	1
32	303193	323-676-056	Feed roller gear bushing	1
33	303523	323-676-057	Timing belt pulley shaft bushing	1
34	303195	323-550-005	Timing belt	1
35	303509	323-636-021	Universal joint	1
36	5234	323-600-297	screw	3
37	5116	324-600-207	"	1
38	303202	323-676-058	Roller clutch bushing	1
39	303204	323-760-001	Roller clutch	1
40	303221	323-750-012	Feed roller pressure lever seat	1
41	5152	323-600-061	screw	2
42	303223	323-510-100	Roller feed frame cover	1
43	1216	323-600-068	screw	2
44	5430	323-620-048	fixing pin	2
45	5137	323-630-202	" " nut	2
46	2905	323-600-074	screw	2
47	303224	323-510-099	Feed roller gear cover	1
48	303225	323-663-034	gasket	1
49	2922	323-600-229	screw	3



(2) URF-321

REF. NO.	PART NO.	NEW PRODUCT CODE NO.	DESCRIPTION	QT.
1	5152	323-600-061	Roller feed hinge lock pin adjust screw	2
2	3044	323-630-001	nut	2
3	303181	323-505-018	Roller feed hinge base	1
4	303203	323-530-037	Roller feed adjust lever	1
5	303205	323-540-039	shaft	1
6	303206	323-615-041	washer	1
7	1175-3	323-600-019	" screw	1
8	303213	323-530-038	Feed roller pressure lever	1
9	303215	323-620-049	pin	1
10	5426	323-630-035	" nut	1
11	303216	323-640-033	spring	1
12	303217	323-680-014	collar (left)	1
13	2237	323-600-067	" " screw	2
14	303218	323-680-015	" (right)	1
15	2213	323-600-237	" " screw	2
16	303525	323-530-039	Roller feed foot lift intermediate lever	1
17	303222	323-530-040	Connect lever	2
18	5184	323-600-079	screw	2
19	303524	323-530-041	Roller feed foot lift lever	1
20	1175-3	323-600-019	screw	2
21	4504	323-600-374	Roller feed hinge base screw	2
22	202576	323-615-201	spacer	2
	303496	323-546-006	Pulley, complete with parts of Ref. Nos. 23-26	1
23	303207	323-546-007	Pulley	1
24	303208	323-580-085	Roller feed eccentric	1
25	5118	323-600-060	screw	2
26	303279	323-800-074	plate	1
27	5080	323-600-008	Pulley position screw	1
28	5081	323-600-009	screw	1
	303245	323-535-006	Roller feed connecting rod, complete (Includes parts of Ref. Nos. 29-38)	1
29	303209	325-535-001	Roller feed drive connection	1
30	303210	325-671-005	ball bearing	1
31	303212	323-535-007	Roller feed connecting rod	1
32	28-1	325-630-207	nut (rear)	1
33	89-1	325-630-210	" (front)	1
34	201579	323-525-015	Roller feed ball joint	1
35	1170-1	323-600-020	cap screw	2
36	201580	323-604-020	ball stud	1
37	202433	323-615-027	" " washer	2
38	3144	323-630-220	" " nut	1
39	303211	323-600-375	Ball bearing screw	1
40	204520	323-615-233	thrust washer	1
41	303204	323-760-001	Roller clutch	2



KSL-321/SPECIFIC PARTS

REF. NO.	PART NO.	NEW PRODUCT CODE NO.	DESCRIPTION	QT.
	303371	323-900-066	KSL-321 head complete	1
			(Includes parts of Ref. Nos. 1-20)	
	303497	323-900-067	Chain cutter frame, complete	1
			(Includes parts of Ref. Nos. 1-14)	
1	303227	323-508-022	Chain cutter frame	1
2	4009-1	323-600-014	screw	2
	303298	323-900-068	Movable blade, complete	1
			(Includes parts of Ref. Nos. 3-11)	
3	303293	323-873-011	Movable blade	1
4	5346	323-600-366	screw	1
5	303230	323-530-036	drive lever	1
6	303278	323-643-011	" " spring	1
7	303295	323-630-028	" " screw nut	1
8	4009-1	323-600-014	" " screw	1
9	5408	323-600-129	adjust screw	1
10	5409	323-630-027	" " lock nut	1
11	303074	323-873-003	Stationary blade	1
12	5022	323-600-251	screw	3
13	303229	323-560-059	fabric guard	1
14	5022	323-600-251	" " screw	3
15	300135A	323-620-031	Movable blade drive lever pin	1
16	303482	323-639-037	Air blower	1
17	1216	323-600-068	screw	1
18	303472	323-683-022	clamp	1
19	1333	323-600-048	" screw	1
20	303086	323-639-022	tube	1
			Other relating parts for URF-321	
21	303477	323-592-002	Presser bar, complete	1
22	303478	323-502-013	Presser arm	1
23	303474	323-508-023	Machine frame	1
24	303475	323-500-024	Machine arm (left)	1
25	303476	323-510-101	Machine top cover	1
26	303479	323-560-060	Cloth plate fabric guard	1

CROSS NUMBER INDEX

NEW PRODUCT				NEW PRODUCT				NEW PRODUCT			
CODE NO.	PART NO.	PAGE	REF NO.	CODE NO.	PART NO.	PAGE	REF NO.	CODE NO.	PART NO.	PAGE	REF NO.
323-500-024	303475	13	24	323-620-045	303176	9	7				
323-502-013	303478	13	22	323-620-046	303178	9	10				
323-505-018	303181	11	3	323-620-047	303492	9	14				
323-508-021	303521	9	2	323-620-048	5430	9	44				
323-508-022	303227	13	1	323-620-049	303215	11	9				
323-508-023	303474	13	23	323-630-001	3044	11	2				
323-510-099	303224	9	47	323-630-027	5409	13	10				
323-510-100	303223	9	42	323-630-028	303295	13	7				
323-510-101	303476	13	25	323-630-035	5426	11	10				
323-525-015	201579	11	34	323-630-202	5137	9	45				
323-530-036	303230	13	5	323-630-220	3144	11	38				
323-530-037	303203	11	4	323-634-004	200555	9	15				
323-530-038	303213	11	8	323-636-021	303509	9	35				
323-530-039	303525	11	16	323-639-022	303086	13	20				
323-530-040	303222	11	17	323-639-037	303482	13	16				
323-530-041	303524	11	19	323-640-032	303179	9	11				
323-535-006	303245	11		323-640-033	303216	11	11				
323-535-007	303212	11	31	323-643-011	303278	13	6				
323-540-037	303186	9	20	323-653-021	303487	9	29				
323-540-038	303192	9	28	323-653-205	202047	9	23				
323-540-039	303205	11	5	323-663-034	303225	9	48				
323-546-005	303191	9	26	323-676-056	303193	9	32				
323-546-006	303496	11		323-676-057	303523	9	33				
323-546-007	303207	11	23	323-676-058	303202	9	38				
323-550-005	303195	9	34	323-680-014	303217	11	12				
323-560-059	303229	13	13	323-680-015	303218	11	14				
323-560-060	303479	13	26	323-683-022	303472	13	18				
323-580-085	303208	11	24	323-690-001	303486	9	25				
323-592-002	303477	13	21	323-690-001	303486	9	31				
323-600-008	5080	11	27	323-692-042	303473	9	1				
323-600-009	5081	11	28	323-720-002	303182	9	16				
323-600-014	4009-1	13	2	323-728-015	303522	9	3				
323-600-014	4009-1	13	8	323-728-016	303493	9	9				
323-600-019	1175-3	11	7	323-750-012	303221	9	40				
323-600-019	1175-3	11	20	323-760-001	303204	9	39				
323-600-020	1170-1	11	35	323-760-001	303204	11	41				
323-600-028	5048	9	8	323-764-005	303187	9	22				
323-600-048	1333	13	19	323-780-015	303185	9	19				
323-600-060	5118	11	25	323-780-016	303485	9	24				
323-600-061	5152	9	41	323-780-016	303485	9	30				
323-600-061	5152	11	1	323-800-074	303279	11	26				
323-600-067	2237	9	13	323-873-003	303074	13	11				
323-600-067	2237	11	13	323-873-011	303293	13	3				
323-600-068	1216	9	43	323-895-001	303481	9					
323-600-068	1216	13	17	323-900-065	303480	9					
323-600-074	2905	9	46	323-900-066	303371	13					
323-600-079	5184	11	18	323-900-067	303497	13					
323-600-129	5408	9	27	323-900-068	303298	13					
323-600-129	5408	13	9	324-600-207	5116	9	37				
323-600-229	2922	9	49	325-535-001	303209	11	29				
323-600-237	2213	11	15	325-630-207	28-1	11	32				
323-600-251	5022	13	12	325-630-210	89-1	11	33				
323-600-251	5022	13	14	325-671-005	303210	11	30				
323-600-263	5274	9	4								
323-600-265	5266	9	6								
323-600-297	5234	9	36								
323-600-341	5292	9	21								
323-600-355	5317	9	18								
323-600-366	5346	13	4								
323-600-374	4504	11	21								
323-600-375	303211	11	39								
323-604-020	201580	11	36								
323-608-001	303175	9	5								
323-615-026	205097	9	17								
323-615-027	202433	11	37								
323-615-041	303206	11	6								
323-615-201	202576	11	22								
323-615-233	204520	11	40								
323-618-002	201029	9	12								
323-620-031	300135A	13	15								

CROSS NUMBER INDEX

PART NO.	NEW PRODUCT CODE NO.	REF PAGE NO.	PART NO.	NEW PRODUCT CODE NO.	REF PAGE NO.	PART NO.	NEW PRODUCT CODE NO.	REF PAGE NO.
28-1	325-630-207	11 32	303206	323-615-041	11 6			
89-1	325-630-210	11 33	303207	323-546-007	11 23			
1170-1	323-600-020	11 35	303208	323-580-085	11 24			
1175-3	323-600-019	11 7	303209	325-535-001	11 29			
1175-3	323-600-019	11 20	303210	325-671-005	11 30			
1216	323-600-068	9 43	303211	323-600-375	11 39			
1216	323-600-068	13 17	303212	323-535-007	11 31			
1333	323-600-048	13 19	303213	323-530-038	11 8			
2213	323-600-237	11 15	303215	323-620-049	11 9			
2237	323-600-067	9 13	303216	323-640-033	11 11			
2237	323-600-067	11 13	303217	323-680-014	11 12			
2905	323-600-074	9 46	303218	323-680-015	11 14			
2922	323-600-229	9 49	303221	323-750-012	9 40			
3044	323-630-001	11 2	303222	323-530-040	11 17			
3144	323-630-220	11 38	303223	323-510-100	9 42			
4009-1	323-600-014	13 2	303224	323-510-099	9 47			
4009-1	323-600-014	13 8	303225	323-663-034	9 48			
4504	323-600-374	11 21	303227	323-508-022	13 1			
5022	323-600-251	13 12	303229	323-560-059	13 13			
5022	323-600-251	13 14	303230	323-530-036	13 5			
5048	323-600-028	9 8	303245	323-535-006	11			
5080	323-600-008	11 27	303278	323-643-011	13 6			
5081	323-600-009	11 28	303279	323-800-074	11 26			
5116	324-600-207	9 37	303293	323-873-011	13 3			
5118	323-600-060	11 25	303295	323-630-028	13 7			
5137	323-630-202	9 45	303298	323-900-068	13			
5152	323-600-061	9 41	303371	323-900-066	13			
5152	323-600-061	11 1	303472	323-683-022	13 18			
5184	323-600-079	11 18	303473	323-692-042	9 1			
5234	323-600-297	9 36	303474	323-508-023	13 23			
5266	323-600-265	9 6	303475	323-500-024	13 24			
5274	323-600-263	9 4	303476	323-510-101	13 25			
5292	323-600-341	9 21	303477	323-592-002	13 21			
5317	323-600-355	9 18	303478	323-502-013	13 22			
5346	323-600-366	13 4	303479	323-560-060	13 26			
5408	323-600-129	9 27	303480	323-900-065	9			
5408	323-600-129	13 9	303481	323-895-001	9			
5409	323-630-027	13 10	303482	323-639-037	13 16			
5426	323-630-035	11 10	303485	323-780-016	9 24			
5430	323-620-048	9 44	303485	323-780-016	9 30			
200555	323-634-004	9 15	303486	323-690-001	9 25			
201029	323-618-002	9 12	303486	323-690-001	9 31			
201579	323-525-015	11 34	303487	323-653-021	9 29			
201580	323-604-020	11 36	303492	323-620-047	9 14			
202047	323-653-205	9 23	303493	323-728-016	9 9			
202433	323-615-027	11 37	303496	323-546-006	11			
202576	323-615-201	11 22	303497	323-900-067	13			
204520	323-615-233	11 40	303509	323-636-021	9 35			
205097	323-615-026	9 17	303521	323-508-021	9 2			
300135A	323-620-031	13 15	303522	323-728-015	9 3			
303074	323-873-003	13 11	303523	323-676-057	9 33			
303086	323-639-022	13 20	303524	323-530-041	11 19			
303175	323-608-001	9 5	303525	323-530-039	11 16			
303176	323-620-045	9 7						
303178	323-620-046	9 10						
303179	323-640-032	9 11						
303181	323-505-018	11 3						
303182	323-720-002	9 16						
303185	323-780-015	9 19						
303186	323-540-037	9 20						
303187	323-764-005	9 22						
303191	323-546-005	9 26						
303192	323-540-038	9 28						
303193	323-676-056	9 32						
303195	323-550-005	9 34						
303202	323-676-058	9 38						
303203	323-530-037	11 4						
303204	323-760-001	9 39						
303204	323-760-001	11 41						
303205	323-540-039	11 5						

CROSS NUMBER INDEX

ALL INFORMATION CONTAINED HEREIN IS UNCLASSIFIED DATE 11/19/01 BY 60322 UCBAW/STP

FILE NUMBER	DATE	DESCRIPTION	INITIALS	REMARKS
100-100000-1000	11-15-68
100-100000-1001	11-15-68
100-100000-1002	11-15-68
100-100000-1003	11-15-68
100-100000-1004	11-15-68
100-100000-1005	11-15-68
100-100000-1006	11-15-68
100-100000-1007	11-15-68
100-100000-1008	11-15-68
100-100000-1009	11-15-68
100-100000-1010	11-15-68
100-100000-1011	11-15-68
100-100000-1012	11-15-68
100-100000-1013	11-15-68
100-100000-1014	11-15-68
100-100000-1015	11-15-68
100-100000-1016	11-15-68
100-100000-1017	11-15-68
100-100000-1018	11-15-68
100-100000-1019	11-15-68
100-100000-1020	11-15-68
100-100000-1021	11-15-68
100-100000-1022	11-15-68
100-100000-1023	11-15-68
100-100000-1024	11-15-68
100-100000-1025	11-15-68
100-100000-1026	11-15-68
100-100000-1027	11-15-68
100-100000-1028	11-15-68
100-100000-1029	11-15-68
100-100000-1030	11-15-68
100-100000-1031	11-15-68
100-100000-1032	11-15-68
100-100000-1033	11-15-68
100-100000-1034	11-15-68
100-100000-1035	11-15-68
100-100000-1036	11-15-68
100-100000-1037	11-15-68
100-100000-1038	11-15-68
100-100000-1039	11-15-68
100-100000-1040	11-15-68
100-100000-1041	11-15-68
100-100000-1042	11-15-68
100-100000-1043	11-15-68
100-100000-1044	11-15-68
100-100000-1045	11-15-68
100-100000-1046	11-15-68
100-100000-1047	11-15-68
100-100000-1048	11-15-68
100-100000-1049	11-15-68
100-100000-1050	11-15-68
100-100000-1051	11-15-68
100-100000-1052	11-15-68
100-100000-1053	11-15-68
100-100000-1054	11-15-68
100-100000-1055	11-15-68
100-100000-1056	11-15-68
100-100000-1057	11-15-68
100-100000-1058	11-15-68
100-100000-1059	11-15-68
100-100000-1060	11-15-68
100-100000-1061	11-15-68
100-100000-1062	11-15-68
100-100000-1063	11-15-68
100-100000-1064	11-15-68
100-100000-1065	11-15-68
100-100000-1066	11-15-68
100-100000-1067	11-15-68
100-100000-1068	11-15-68
100-100000-1069	11-15-68
100-100000-1070	11-15-68
100-100000-1071	11-15-68
100-100000-1072	11-15-68
100-100000-1073	11-15-68
100-100000-1074	11-15-68
100-100000-1075	11-15-68
100-100000-1076	11-15-68
100-100000-1077	11-15-68
100-100000-1078	11-15-68
100-100000-1079	11-15-68
100-100000-1080	11-15-68
100-100000-1081	11-15-68
100-100000-1082	11-15-68
100-100000-1083	11-15-68
100-100000-1084	11-15-68
100-100000-1085	11-15-68
100-100000-1086	11-15-68
100-100000-1087	11-15-68
100-100000-1088	11-15-68
100-100000-1089	11-15-68
100-100000-1090	11-15-68
100-100000-1091	11-15-68
100-100000-1092	11-15-68
100-100000-1093	11-15-68
100-100000-1094	11-15-68
100-100000-1095	11-15-68
100-100000-1096	11-15-68
100-100000-1097	11-15-68
100-100000-1098	11-15-68
100-100000-1099	11-15-68



