



PEGASUS

INDUSTRIAL
SEWING MACHINE

PARTS LIST

FOR MODEL

DCP-101

DCP-101W

DCP-103

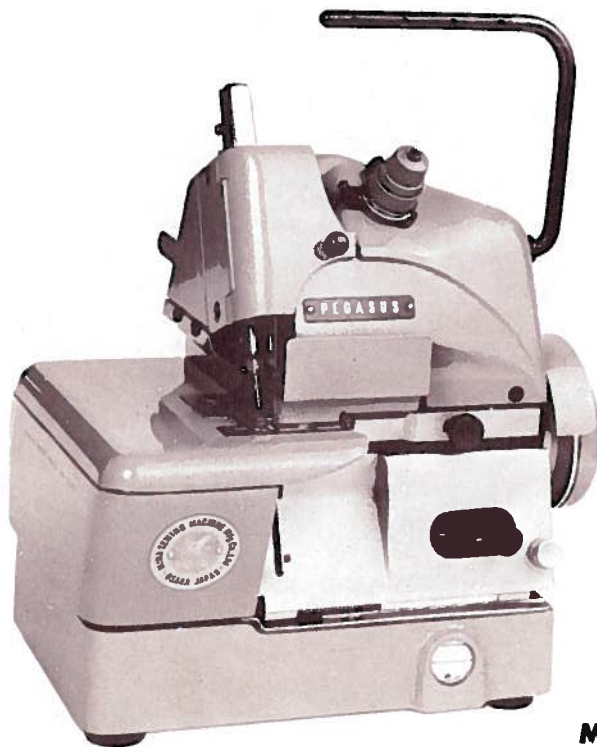
DCP-105

DCP-106

DCP-109

DCP-109W

HIGH SPEED OVERLOCK STITCH MACHINE



MODEL DCP-101

MIMA SEWING MACHINE CO., LTD.
PEGASUS SEWING MACHINE MFG. CO., LTD.

THE UNIVERSITY OF CHICAGO

PHYSICS DEPARTMENT

PHYSICS 439

LECTURE 1

STATISTICAL MECHANICS

1998

BY

JOHN H. COLEMAN

IN ORDERING PARTS

This book has been arranged to simplify ordering repair parts for, on the basis of model DCP-101, model DCP-101W, 103, 105, 106, 109 & 109W.

Various sections of the mechanisms are shown on each page. On the page opposite the illustrations will be found a listing of the parts with their reference numbers, parts numbers, names, the number of pieces required and the remarks.

At the back of this book, a numerical index of all parts is shown. This will facilitate locating the illustration and descriptions when only the part number is known.

Where parts for model DCP-101 and other DCP-100 series machines are not the same, the difference is shown in the remarks column and on the pages 20 to 23. When a part is used for all machines covered by page 2 to 19 of this list, no machine model is mentioned in the remarks column.

In ordering parts from this book, the part number MUST be quoted exactly as it is shown in the second column on the page opposite the illustration. Reference number should never be used in ordering parts.

部品表御利用に際して

本部品表はDCP-101型を基本型にDCP-100シリーズミシンの修理用部品を容易に御利用戴く様編集されています。

各頁には機構別に収録され、部品図解頁（左開き）の反対頁（右開き）には参照番号、部品番号名称、数量、備考欄の順で記載されています。

本部品表の最終頁（26、27頁）には部品番号索引を付し、部品番号のみでその図解、名称等が容易に引き出せます。

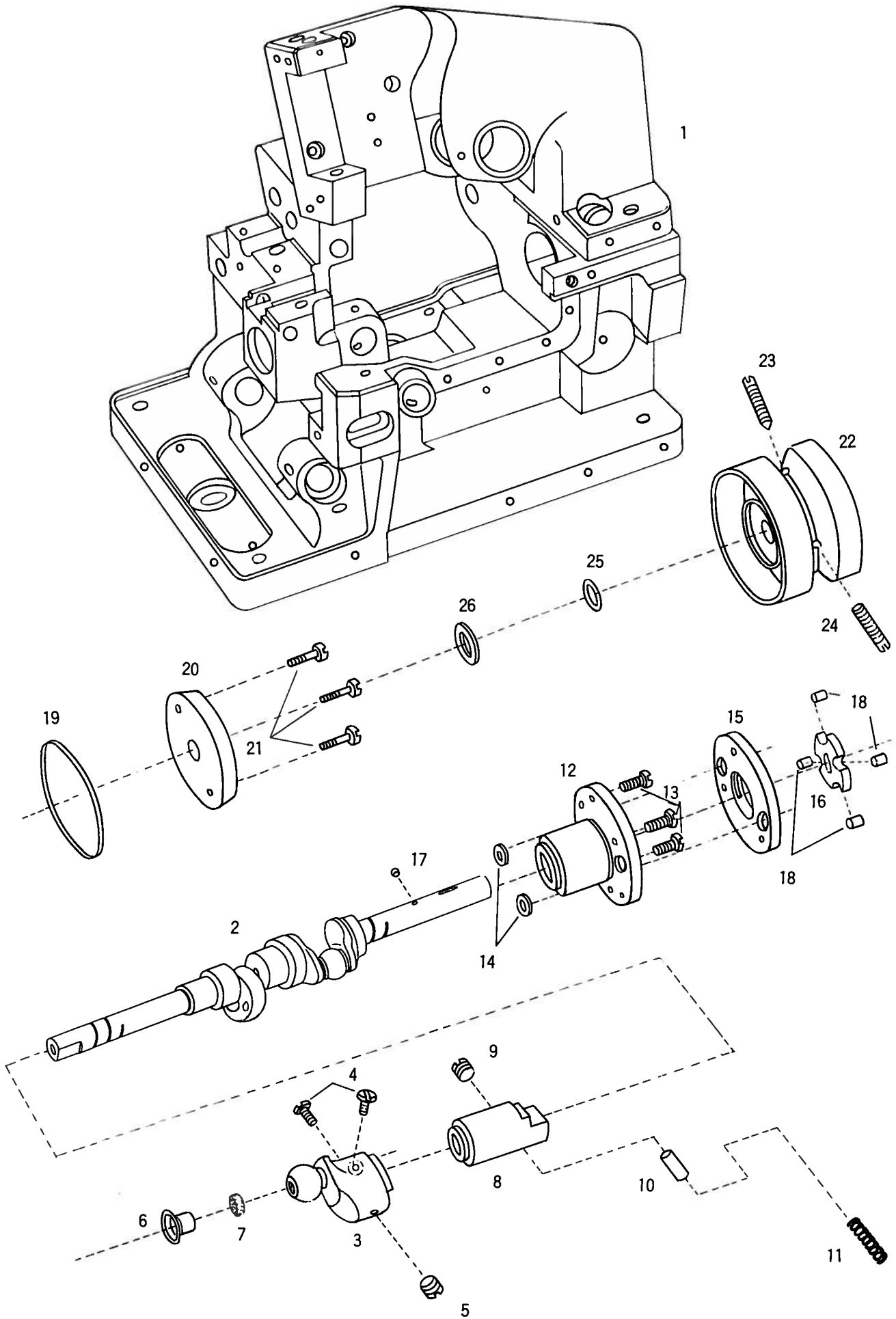
DCP-101型用と他のDCP-100シリーズ型用と異なる部品は備考欄に注記し、22頁から25頁には異なる機種の専用部品を網羅しています。2頁から21頁にわたり備考欄に機種名の記載なき部品はDCP-101シリーズの全機種に共通です。

部品御注文の際は、必ず部品番号のみを明示し参照番号は絶対に使用しないで下さい。

尚、本部品表は1970年10月現在製造中のDCP-100シリーズマシン用に作成されております。

CONTENTS

	目 次	PAGE 頁
MACHINE FRAME, CRANKSHAFT & OIL PUMPING MECHANISM	アームベッド・主軸・ポンプ機構	2 ~ 3
NEEDLE DRIVE MECHANISM	針 棒 機 構	4 ~ 5
LOOPER DRIVE MECHANISM	大・小ルーパー機構	6 ~ 7
FEED MECHANISM	送 り 機 構	8 ~ 9
UPPER & LOWER KNIFE MECHANISM	上・下メス機構	10 ~ 11
PRESSER FOOT & LIFTING MECHANISM	押 エ 機 構	12 ~ 13
LUBRICATING MECHANISM	給 油 機 構	14 ~ 15
CLOTH PLATE & MISCELLANEOUS COVERS (1)	カバー・外装関係(1)	16 ~ 17
MACHINE FRAME (FRONT) & MISCELLANEOUS COVERS (2)	カバー・外装関係(2)	18 ~ 19
PARTS FOR MODEL DCP-101W, 103 & 105 ONLY	DCP-101W, 103, 105 型専用部品	20 ~ 21
PARTS FOR MODEL DCP-106, 109 & 109W ONLY	DCP-106, 109, 109W 型専用部品	22 ~ 23
ACCESSORIES	付 属 品	24 ~ 25
INDEX	索 引	26 ~ 27

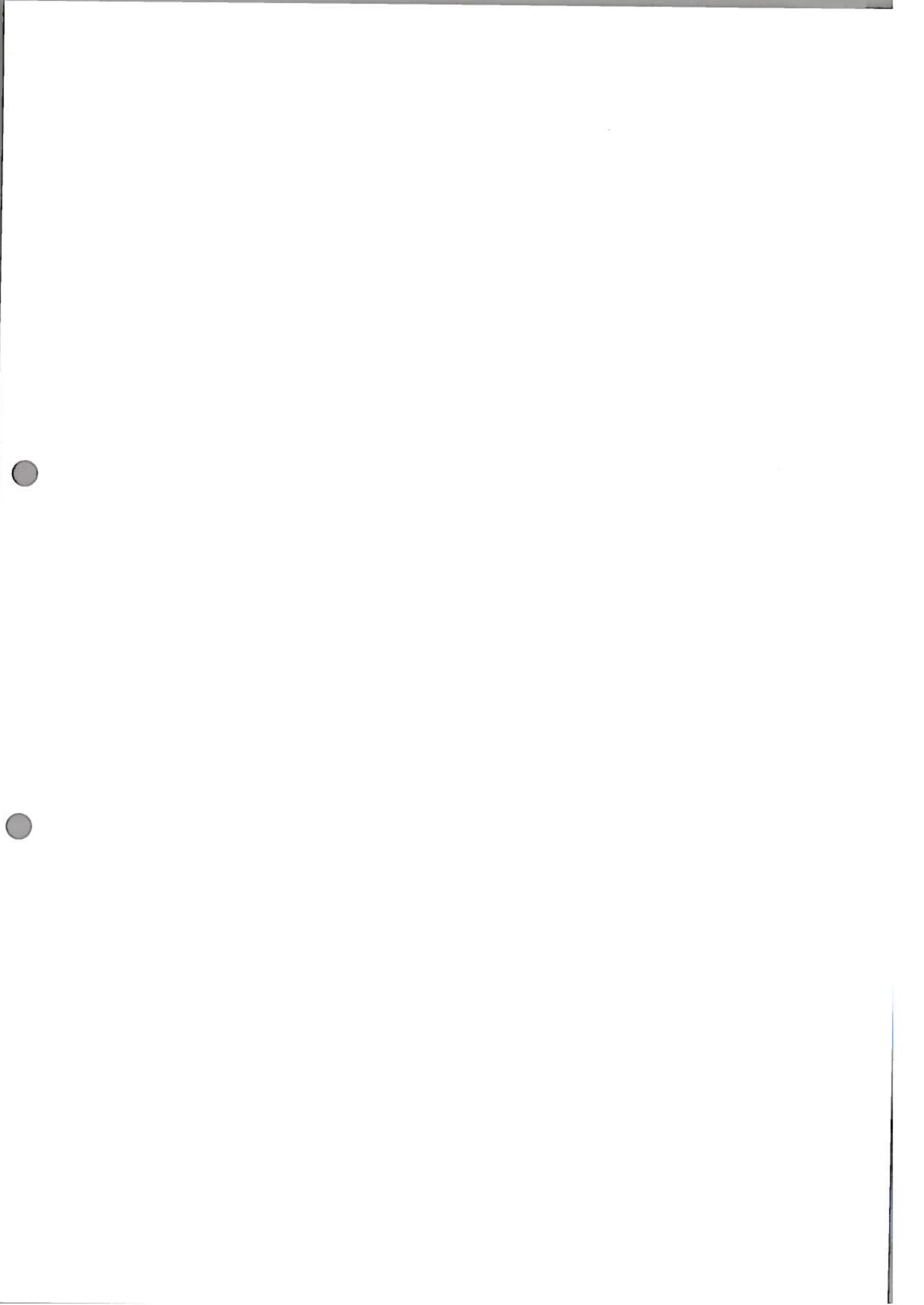


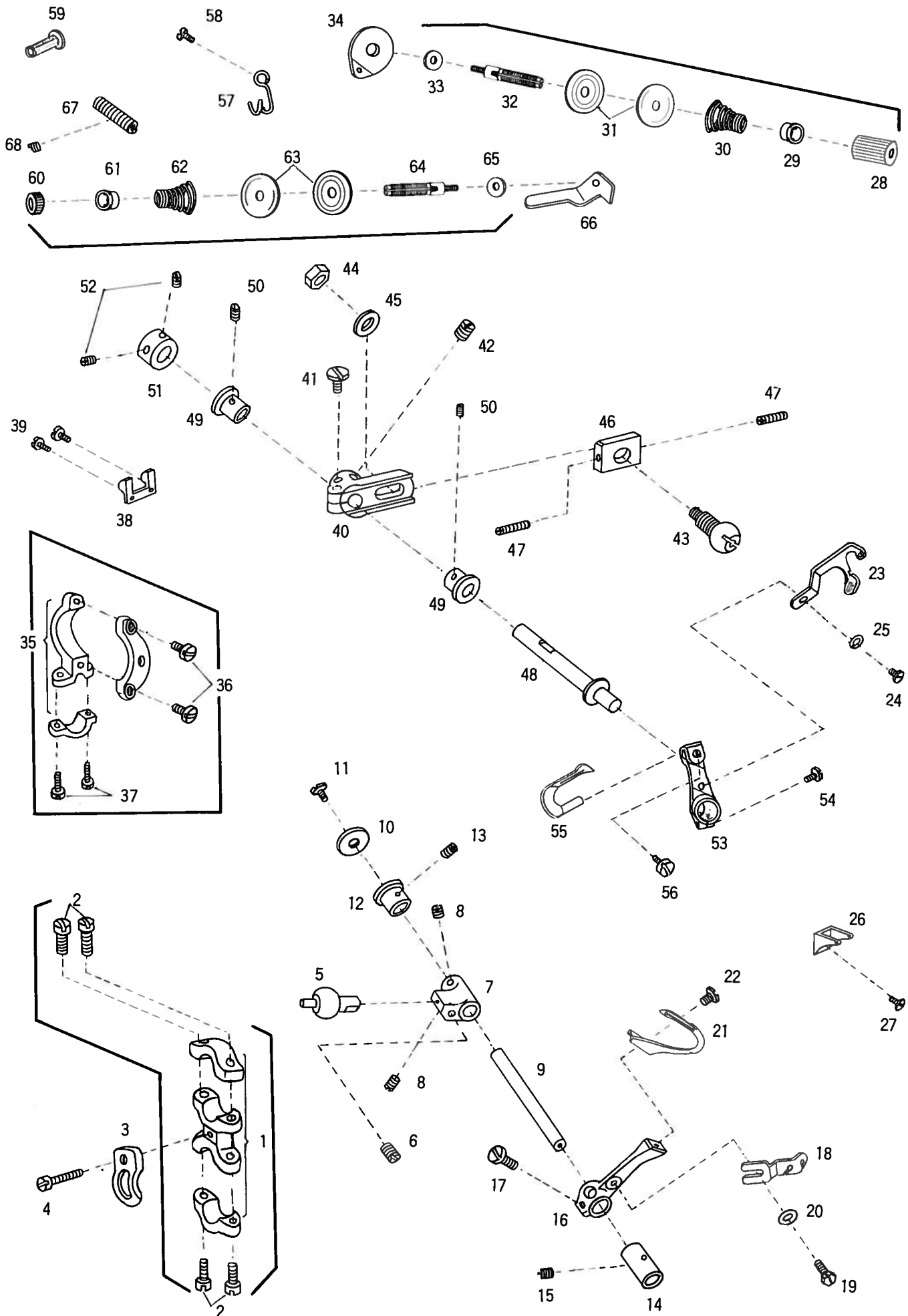
MACHINE FRAME, CRANKSHAFT & OIL PUMPING MECHANISM

アームベッド・主軸・ポンプ機構

Ref. No. 参照番号	Parts No. 部品番号	Name	名称	Qt. 数量	Remarks 備考
1	200510	Arm-bed, complete with 200003, 200511, 1936x2, & 137950x2	アームベッド(組)200003, 200511, 1936x2, 137950x2トノ組	1	
	200003	Arm	アーム	1	
	200511	Bed	ベッド	1	
	1936	Arm-bed screw	アーム締付ネジ	2	
	137950	" taper pin	アームベッドテーパピン	2	
2	200317A	Crankshaft, complete with 200321B & 200605	クランクシャフト(組)200321B, 200605トノ組	1	DCP-101W, 105 109 & 109W only用
	200605	" oil ring	* 油受リング	1	
	200222	" crank	エキセンクランク	1	
	5026	" " position screw	* 調節ネジ	2	
	2022-3	" " screw	* 止ネジ	1	
6	200607	" " oil cap	* 油栓	1	
7	200389	" " " wick	* 用フェルト	1	
8	200221	" bushing	小ブッシュ	1	
9	2022-3	" " screw	* 止ネジ	1	
10	200219	" " oil wick	* 吸油口用フェルト	1	
11	200220	" " " " spring	* * 押エバネ	1	
12	200291	" flanged bushing	大ブッシュ	1	
13	1175-3	" " " screw	* 止ネジ	3	
14	200020	Oil pumping 'O' ring	ポンプ吸吐口用"O"リング	2	
15	200018	Stator	ステーター	1	
16	200015	Rotor	ローター	1	
17	200016	" key ball (1/8")	* 廻り止メボール(1/8"鋼球)	1	
18	200017	" roller	羽根ローラー	4	
19	200021	" cover plate 'O' ring	ポンプ外周用"O"リング	1	
20	200292	" " plate	* 蓋	1	
21	5010	" " " screw	* * 止ネジ	3	
22	200202B	Pulley	Vベルト用プーリー	1	
23	5052	" position screw	* 止ネジ(先有)	1	
24	5051	" screw	* * (先無)	1	
25	200030	" 'O' ring	プーリー用"O"リング小	1	
26	200024	" thrust washer	* スラストワッシャー	1	



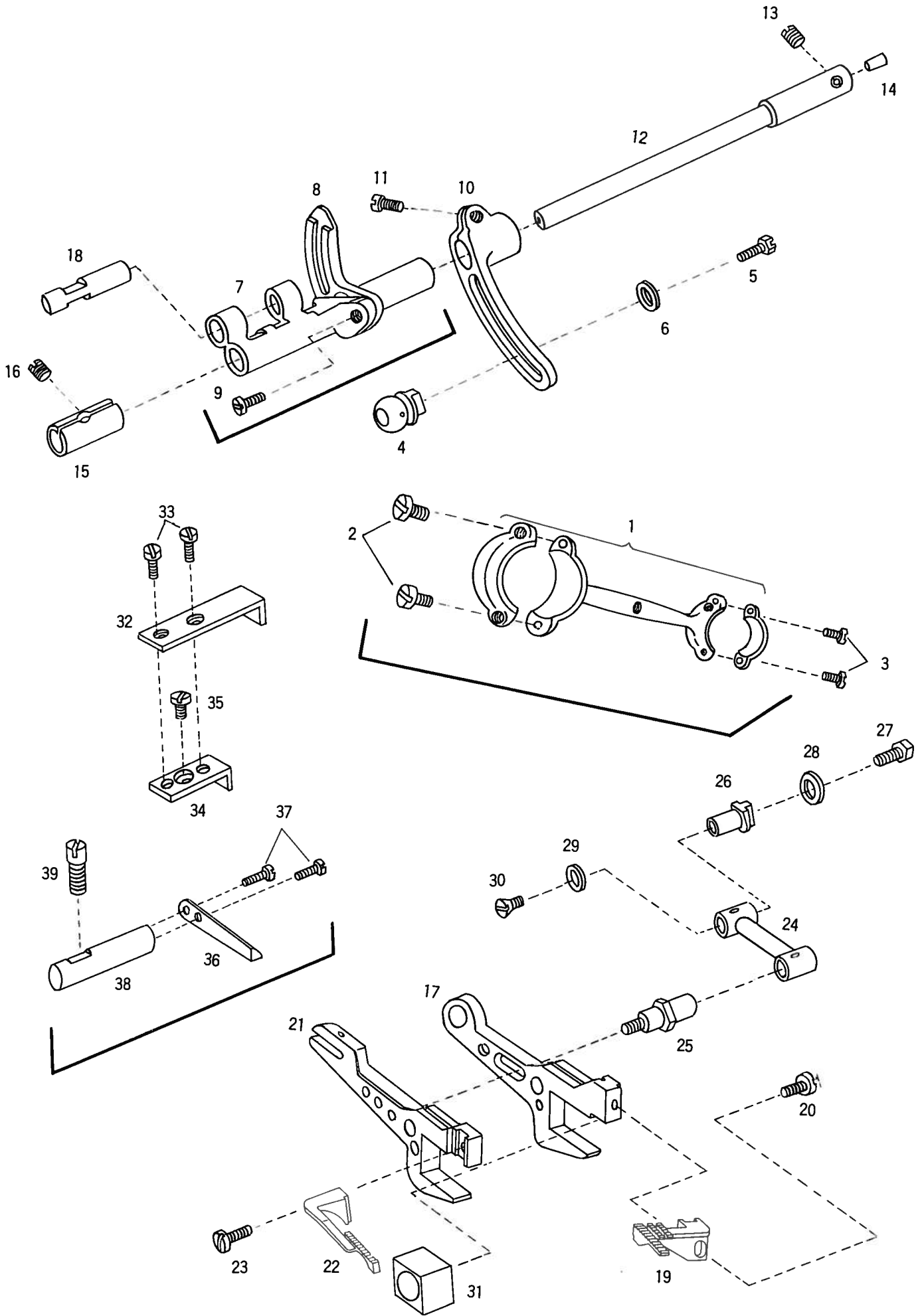




LOOPER DRIVE MECHANISM

大・小ルーパー機構

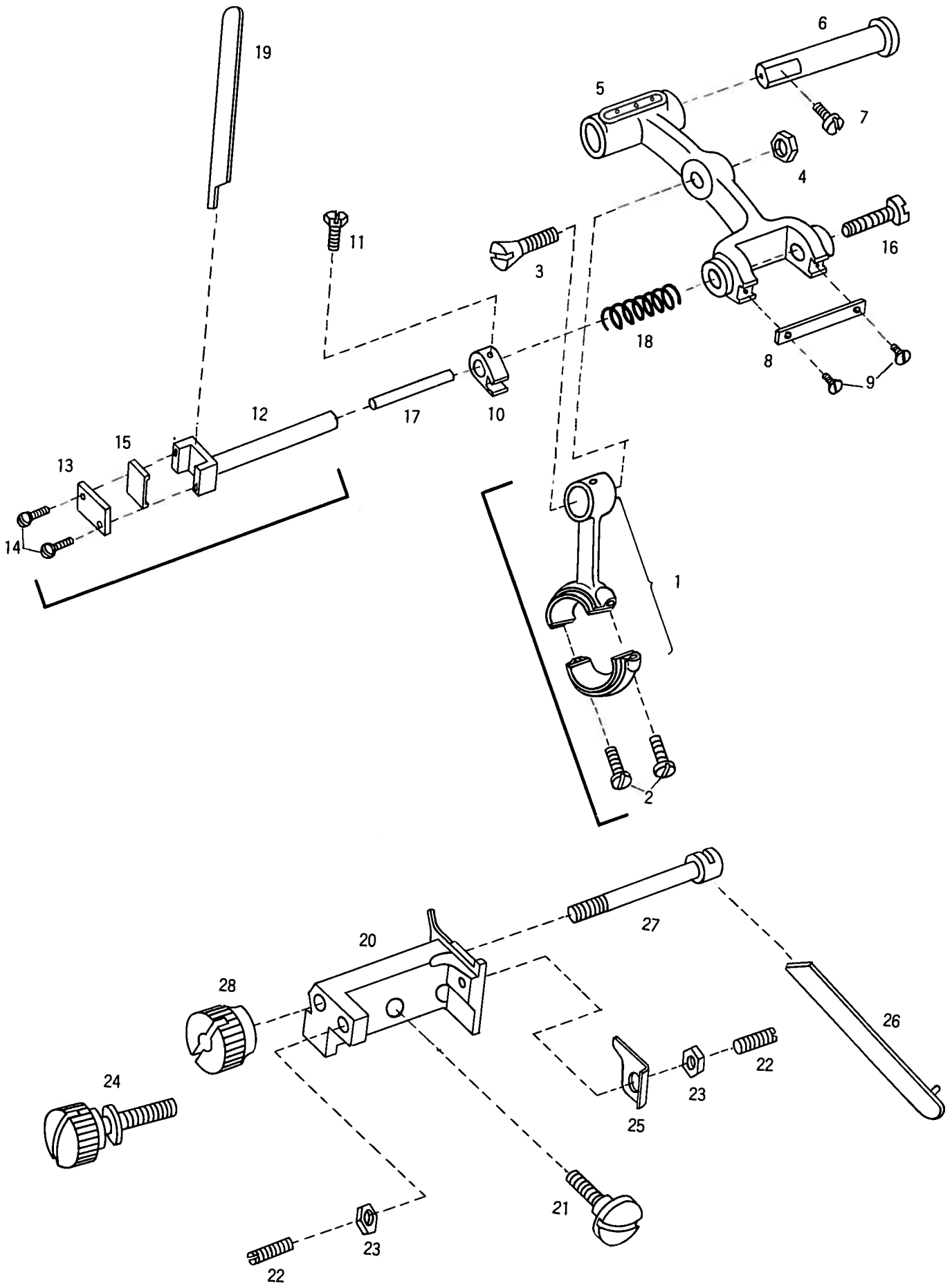
Ref. No. 参照番号	Parts No. 部品番号	Name	名称	Qt. 数量	Remarks 備考
	200617	Right looper drive connection, complete with 200618 & 2213-1x4	小ロッド(組)200618, 2213-1x4トノ組	1	
1	200618	" " " " connection	小ロッド	1	
2	2213-1	" " " " cap screw	〃 蓋止ネジ	4	
3	137130	" " " " guide	〃 振り止メ	1	
4	5010	" " " " screw	〃 〃 止ネジ	1	
5	137121	" " " " ball stud	〃 球	1	
6	2022-3	" " " " screw	〃 〃 止ネジ	1	
7	200053	" " lever crank	大ルーパークランク	1	
8	2022	" " " " screw	〃 〃 止ネジ	2	
9	200054	" " " " shaft	大ルーパー台軸	1	
10	200055	" " " " thrust washer	〃 スラストワッシャー	1	
11	5064	" " " " screw	〃 〃 止ネジ	1	
12	200057	" " " " flanged bushing	〃 ブッシュ(ツバ付)	1	
13	1457	" " " " bushing screw	〃 〃 止ネジ	1	
14	200058	" " " " bushing screw	〃 〃 (ツバ無)	1	
15	1457	" " " " screw	〃 〃 止ネジ	1	
16	200059	" " lever	大ルーパー台	1	
17	5002	" " " " screw	〃 〃 締付ネジ	1	
18	200062	Left looper thread take-up	〃 糸道	1	
19	2193	" " " " screw	〃 〃 止ネジ	1	
20	137142	" " " " washer	〃 〃 〃 座金	1	
21	137301	Right looper	大ルーパー	1	DCP-101, 101W, 103(3本糸) & 106 only用
22	1196	" " " " screw	〃 〃 止ネジ	1	
23	200063	" " " " thread take-up	〃 〃 糸サバキ	1	
24	1202	" " " " screw	〃 〃 止ネジ	1	
25	201252	" " " " " " spring washer	〃 〃 〃 バネ座金	1	
26	200226	" " " " guide	前糸道	1	
27	1202	" " " " screw	〃 〃 止ネジ	1	
28	200064	" " " " tension, complete with 200065, 101113, 137114, 101111x2 & 1817-2A	前糸調子(組)200065, 101113, 137114, 101111x2, 1817-2A トノ組	1	
29	200065	" " " " nut	〃 ナット	1	
30	101113	" " " " spring bushing	〃 〃 止パイプ	1	
31	137114	" " " " spring (light)	〃 バネ(弱)	1	
32	101111	" " " " disc	〃 皿	2	
33	1817-2A	" " " " post	〃 棒	1	
34	137142	" " " " washer	〃 〃 座金	1	
35	137106	" " " " plate	〃 台	1	
36	200513	Left looper drive connection, complete with 200501, 5002x2 & 5029x2	小ルーパー振りロッド(組)200501, 5002x2 5029x2トノ組	1	
37	200501	" " " " connection	小ルーパー振りロッド	1	
38	5002	" " " " screw (large)	〃 〃 蓋止ネジ(大)	2	
39	5029	" " " " screw (small)	〃 〃 (小)	2	
40	200070	" " " " guide	〃 〃 振り止メ	1	
41	5012	" " " " screw	〃 〃 止ネジ	2	
42	200373	" " lever crank	小ルーパークランク	1	
43	1156	" " " " clamp screw	〃 〃 抱締ネジ	1	
44	1458	" " " " screw	〃 〃 止ネジ	1	
45	200293A	" " " " ball stud	〃 球	1	
46	5137	" " " " nut	〃 〃 ナット	1	
47	137142	" " " " washer	〃 〃 〃 座金	1	
48	200294	" " drive connection guide collar	小ルーパー振りロッド振り止メカラー	1	
49	1892	" " " " screw	〃 〃 〃 止ネジ	2	
50	200073	" " lever shaft	小ルーパー台軸	1	
51	200057	" " " " bushing	〃 〃 ブッシュ	2	
52	1457	" " " " screw	〃 〃 〃 止ネジ	2	
53	200074	" " thrust collar	〃 スラストカラー	1	
54	2022	" " " " screw	〃 〃 〃 止ネジ	2	
55	200225	" " lever	小ルーパー台	1	
56	5002	" " " " screw	〃 〃 抱締ネジ	1	
57	137302	" looper	小ルーパー	1	
58	5053	" " screw	〃 〃 止ネジ	1	
59	193171	" " thread eyelet	後カバー糸道	1	
60	1326	" " " " screw	〃 〃 止ネジ	1	
61	200077	" " " " guide	大カバー裏糸道パイプ	1	
62	200078	" " " " tension, complete with 3056, 101113, 139115, 101111x2 & 1817-2A	裏糸調子(組)3056, 101113, 137115, 101111x2, 1817-2A トノ組	1	
63	3056	" " " " nut	〃 ナット	1	
64	101113	" " " " spring bushing	〃 〃 止パイプ	1	
65	137115	" " " " spring (medium)	〃 バネ(中)	1	
66	101111	" " " " disc	〃 皿	2	
67	1817-2A	" " " " post	〃 棒	1	
68	137142	" " " " washer	〃 〃 座金	1	
69	137016	" " " " plate	〃 〃 台	1	
70	137103	" " thread tube	糸道パイプ	1	
71	1457-1	" " " " screw	〃 〃 止ネジ	1	



FEED MECHANISM

送 り 機 構

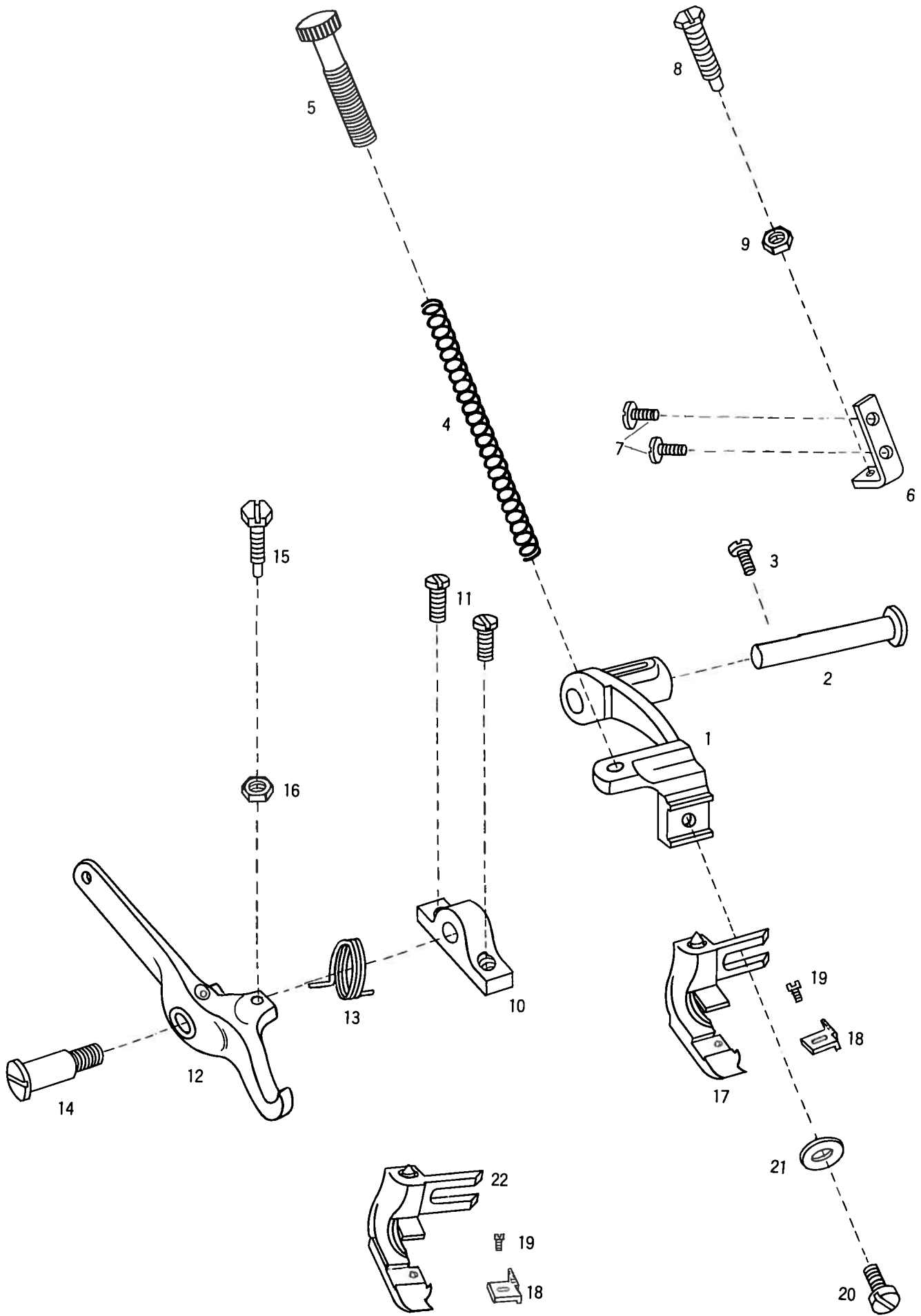
Ref. No. 参照番号	Parts No. 部品番号	Name	名 称	Qt. 数量	Remarks 備 考
	200514	Feed bar drive connection, complete with 200503, 5002x2 & 5003x2	送り前後ロッド(組)200503, 5002x2 5003x2トノ組	1	
1	200503	" " " connection	送り前後ロッド	1	
2	5002	" " " " cap screw (large)	〃 蓋止ネジ大	2	
3	5003	" " " " " (small)	〃 〃 小	2	
4	137419	" " " " ball stud	〃 球	1	
5	5001	" " " " " " screw	〃 〃 止ネジ	1	
6	137142	" " " " " " " washer	〃 〃 〃 座金	1	
	200310A	" rocker, complete with 200308, 200309 & 1170-3x2	送りロックシャフト(組)200308, 200309 1170-3x2トノ組	1	
7	200308	" rocker	送りロックシャフト	1	
8	200309	Differential feed regulator	差動送り調節器	1	
9	1170-3	" " " " screw	〃 止ネジ	2	
10	200322	Feed drive segment	送り調節器	1	
11	1156	" " " " set screw	〃 抱締ネジ	1	
12	200089	" rocker pivot shaft	送りロックシャフトピン	1	
13	2022-3	" " " " screw	〃 〃 止ネジ	1	
14	202903	" " " " oil wick	〃 〃 油栓	1	
15	137409	" " " " split bushing	割ブッシュ	1	
16	2022	" " " " " " " screw	〃 止ネジ	1	
17	200311	Feed bar	送り台	1	
18	200315A	" " hinge pin	〃 ピン	1	
19	200229A	" dog	送り歯	1	DCP-101, 105
20	1175-2	" " screw	〃 止ネジ	1	& 109 only用
21	200312	Differential feed bar	差動送り台	1	
22	200318A	" " dog	差動送り歯	1	DCP-101, 105
23	1175-2	" " " " screw	〃 止ネジ	1	& 109 only用
24	200314	" " drive adjusting connection	差動調節器	1	
25	200316	" " " " " " screw stud	〃 ピン	1	
26	200097	" " " " " stud	差動調節器	1	
27	2308	" " " " " " screw	〃 止ネジ	1	
28	200098	" " " " " " " washer	送り調節器止ネジ座金	1	
29	200099	" " " " " " thrust washer	〃 スラストワッシャー	1	
30	3001	" " " " " " " " screw	〃 〃 〃 止ネジ	1	
31	200502	Feed lift block	送り上下角玉	1	
32	200081	" bar guide (upper)	送り台案内金(上)	1	
33	1174	" " " " " screw	〃 〃 止ネジ	2	
34	200082	" " " " (middle)	〃 (中)	1	
35	5136	" " " " " screw	〃 〃 止ネジ	1	
	200085	" " " " (lower), complete with 200803, 1170-3x2 & 200084	〃 (下)(組)200083, 1170-3x2 200084トノ組	1	
36	200083	" " " " (lower)	送り台案内金(下)	1	
37	1170-3	" " " " " screw	〃 〃 止ネジ	2	
38	200084	" " " " " bracket	〃 〃 止台	1	
39	1419	" " " " " " screw	〃 〃 〃 止ネジ	1	



UPPER & LOWER KNIFE MECHANISM

上・下メス機構

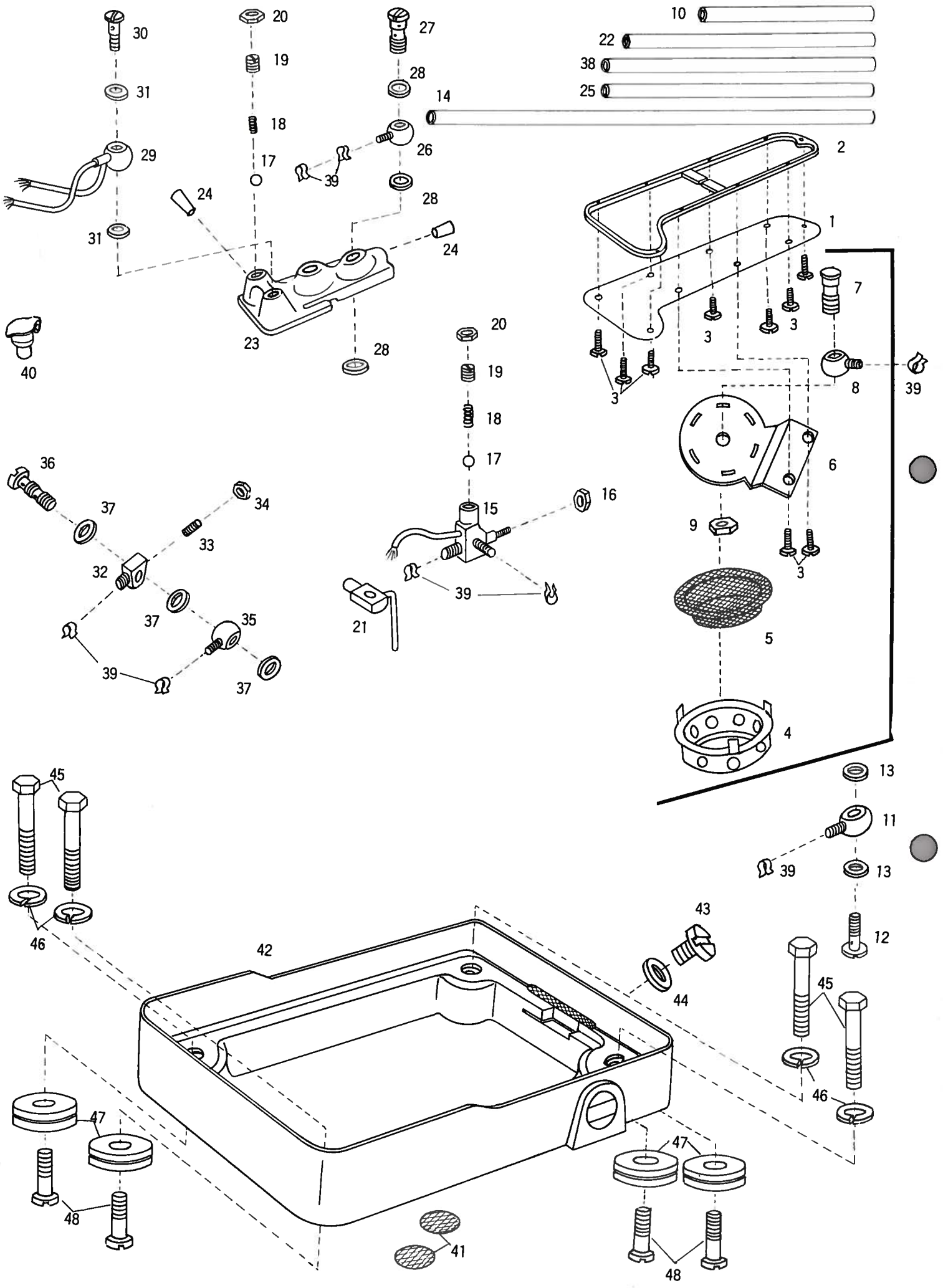
Ref. No. 参照番号	Parts No. 部品番号	Name	名称	Qt. 数量	Remarks 備考
	200103	Upper knife drive connection, complete with 200102 & 1174x2	上メスロッド(組)200102, 1174x2 トノ組	1	
1	200102	" " " connection	上メスロッド	1	
2	1174	" " " " cap screw	" 蓋止ネジ	2	
3	167005	" " " " stud	" テーパーネジ	1	
4	3018	" " " " " nut	" " ナット	1	
5	200105A	" " lever, complete with 137553 & 5259x2	上メス台(組)137553, 5259x2トノ組	1	
6	137552	" " " shaft	" ピン	1	
7	2133-1	" " " " screw	" " 止ネジ	1	
8	137553	" " guide bar	上メス案内板	1	
9	5259	" " " " screw	" " 止ネジ	2	
10	137554	" " guide	" 案内	1	
11	5027	" " " screw	" " 止ネジ	1	
	200106	" " carrier, complete with 138555, 138555-1 & 1399x2	" 抱キ(組)138555, 138555-1 1399x2トノ組	1	
12	138555	" " carrier	" 抱キ	1	
13	138555-1	" " " cap plate	" " 蓋	1	
14	5224	" " " " " screw	" " " 止ネジ	2	
15	138556	" " clamp	" 押シ	1	
16	1132	" " " screw	" " ネジ	1	
17	137560	" " " pin	" " ピン	1	
18	137558	" " " spring	" " バネ	1	
19	138559	" knife 2.27	上メス	1	
20	137561	Lower knife carrier	下メス台	1	DCI-101, 105, 106 & 109 only用
21	5065	" " " screw	" 止ネジ	1	
22	1435	" " " stop screw	" 左・右ストップネジ	2	
23	3044	" " " " " nut	" " " ナット	2	
24	5070	" " " adjusting screw	" 調節ネジ	1	
25	137561-1	Needle plate support	" カバー	1	
26	137562	Lower knife 2.17	下メス	1	
27	137563	" " clamp	" 止ピン	1	
28	5069	" " " nut	" " ナット	1	



PRESSER FOOT & LIFTING MECHANISM

押 工 機 構

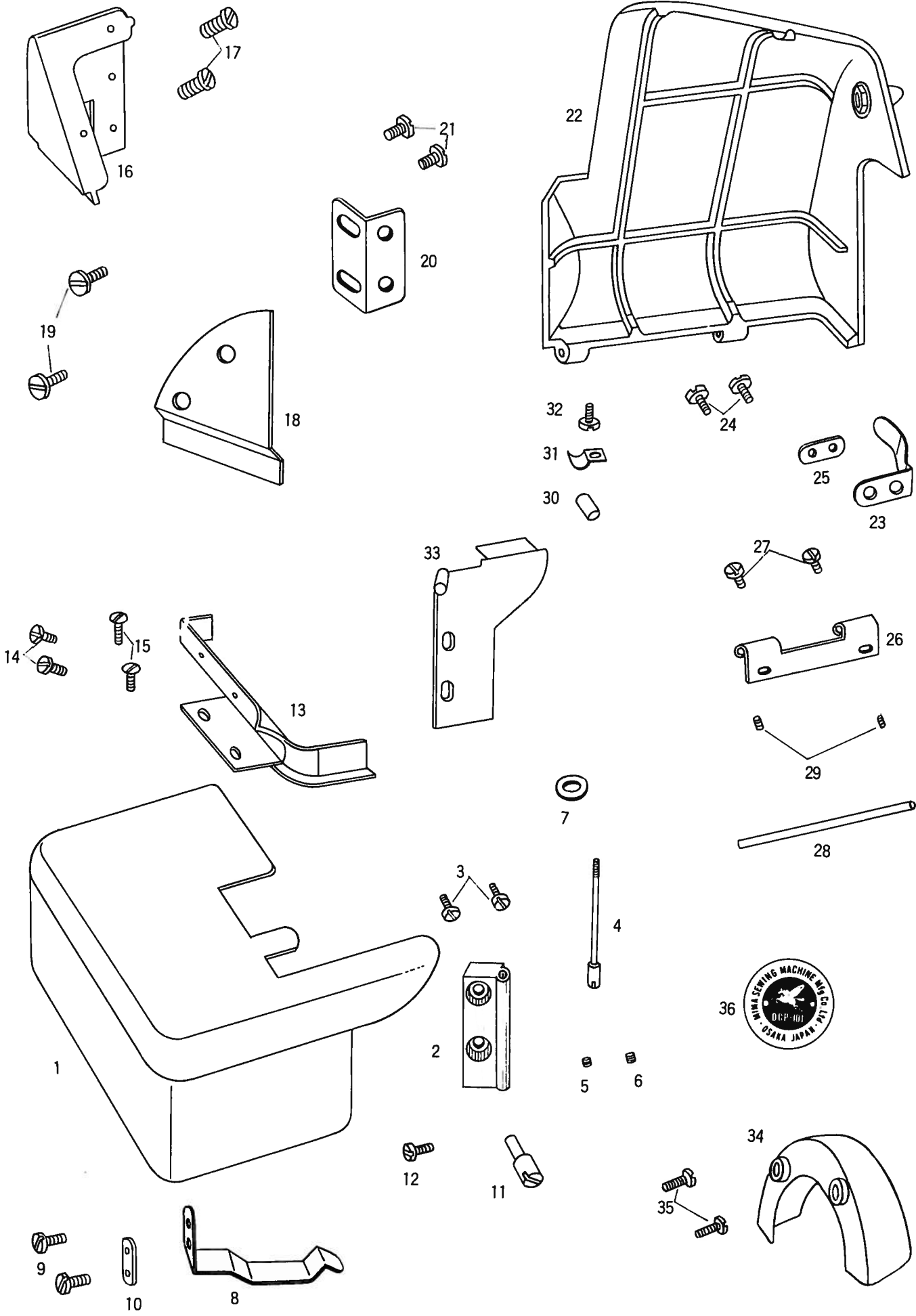
Ref. No. 参照番号	Parts No. 部品番号	Name	名 称	Qt. 数量	Remarks 備 考
1	200109	Presser foot carrier	押工台	1	
2	200319	" " " pivot stud	〃 ピン	1	
3	2213	" " " " " screw	〃 〃 止ネジ	1	
4	200110	" " pressure spring	〃 バネ	1	
5	2371	" " " adjusting thumb screw	〃 〃 調節ネジ	1	
6	200111	" " lift adjusting bracket	〃 揚程調節	1	
7	1175-3	" " " " " screw	〃 〃 止ネジ	2	
8	5017	" " " " " screw	〃 〃 ネジ	1	
9	3044	" " " " " nut	〃 〃 ナット	1	
10	137145A	" " lifting lever bracket	押工足揚台	1	
11	2213	" " " " " screw	〃 〃 止ネジ	2	
12	200117	" " " lever	〃 足揚	1	
13	137147	" " " " " spring	〃 〃 バネ	1	
14	2285	" " " " " pivot stud	〃 〃 取付ネジ	1	
15	5017	" " " " " stop screw	〃 〃 調節ネジ	1	
16	3044	" " " " " " nut	〃 〃 ナット	1	
17	200268	" foot (solid), complete with 200266, 137163 & 1231	固定押工(組)200266, 137163 1231トノ組	1	
	200267	" " body	大押工	1	
	200116	" " plate	小押工	1	
	137166	" " " hinge pin	〃 フックピン	1	
	137161	" " " spring	〃 バネ	1	
	137165	" " " " " adjusting pin	〃 〃 ピン	1	
	1459	" " " " " " screw	〃 〃 止ネジ	1	
18	137163	" " chaining-off finger	押工爪	1	
19	1231	" " " " " screw	〃 止ネジ	1	
20	2902	" " screw	押工止ネジ	1	
21	137142	" " " washer	〃 座金	1	
22	200113	" foot (hinged), complete with 200112, 137163, & 1231	自由押工(組)200112, 137163 1231トノ組	1	



LUBRICATING MECHANISM

給 油 機 構

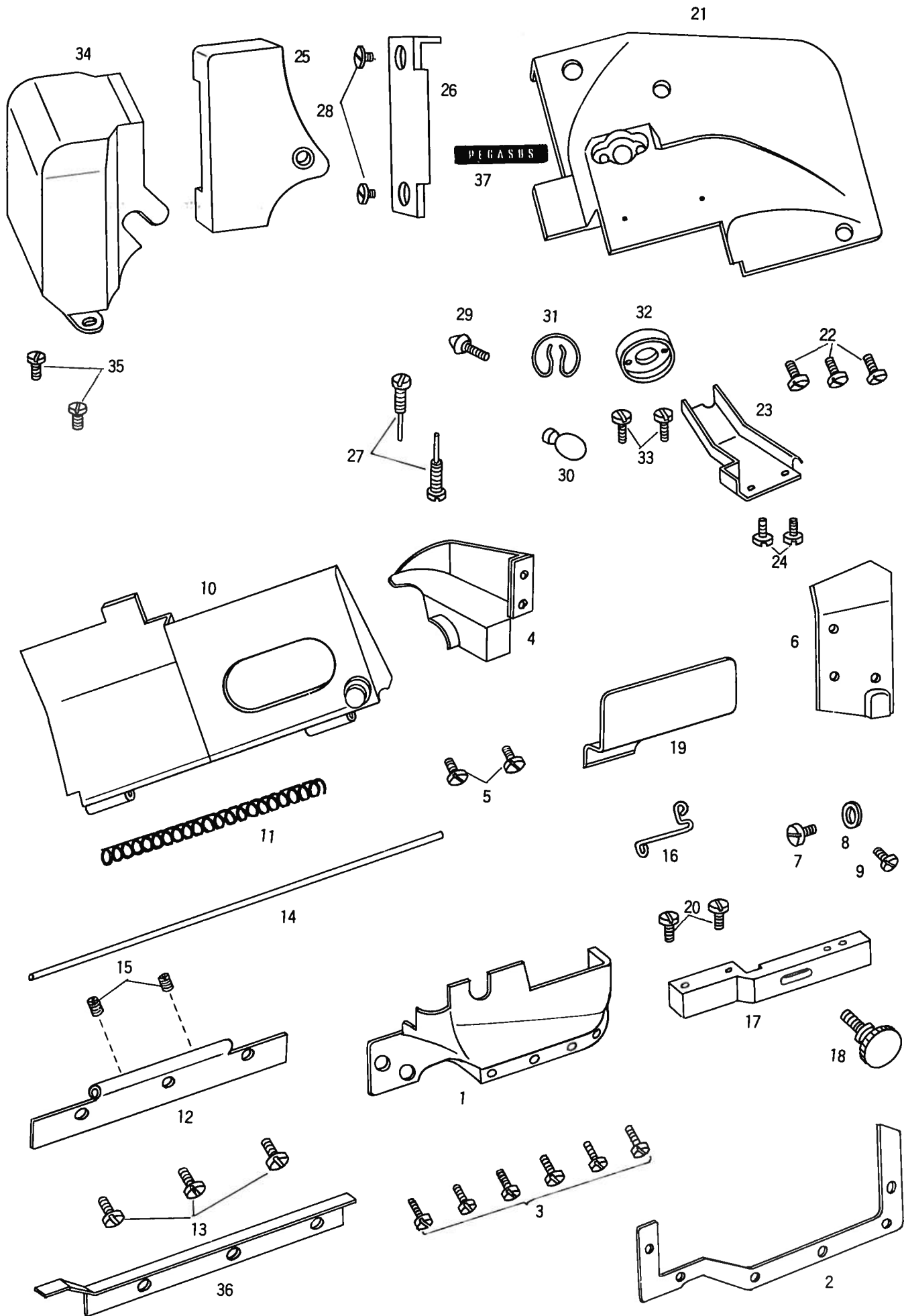
Ref. No. 参照番号	Parts No. 部品番号	Name	名 称	Qt. 数量	Remarks 備 考
1	200505	Machine bottom cover	底板	1	
2	200506	" " " gasket	＊ バッキン	1	
3	2902	" " " screw	＊ 止ネジ	9	
	200497	Oil screen filter frame, complete with	油漉枠(組)200498, 200499, 200500, 200131	1	
4	200498	" " " frame	200500, 200137, 200136 & 5020 200136, 5020トノ組	1	
5	200499	" " " filter	＊ 網	1	
6	200500	" " " plate	＊ ＊ 止金板	1	
7	200137	" distributing tube joint screw	油漉吸油口パイプ継手雄	1	
8	200136	" " " joint	＊ ＊ 雌	1	
9	5020	" " " " screw nut	＊ ＊ 締ナット	1	
10	202472	" " " tube	吸油口用ビニールパイプ	1	
11	200262	" " " joint	＊ 継手雌	1	
12	200131	" " " " screw	＊ ＊ 雄	1	
13	200138	" " " " " washer	＊ ＊ ＊ ワッシャー	2	
14	200139	" " " tube	上軸給油調節器給油用ビニールパイプ	1	
15	200520	" " " regulator, complete	＊ (組)	1	
16	5020	" " " clamp nut	＊ ＊ ナット	1	
17	200144	" " " & oil distributor ball	＊ 及ビ油配分器ボール	2	
18	200145	" " " " " " " " spring	＊ ＊ パネ	2	
19	2022-3	" " " " " " " " screw	＊ ＊ 調節ネジ	2	
20	5020	" " " " " " " " " nut	＊ ＊ ＊ 締ナット	2	
21	200515	Needle bar drive arm pivot shaft oil reservoir	上軸給油用油受(組)	1	
22	200140	Oil distributing tube	油配分器用ビニールパイプ	1	
23	200522	" distributor	油配分器	1	
24	202903	" " cork	＊ 油栓	2	
25	200139	" distributing tube	＊ 排油用ビニールパイプ	1	
26	200136	" " " joint	＊ ＊ 継手上雌	1	
27	200141	" " " " " screw	＊ ＊ 継手雄	1	
28	200138	" " " " " washer	＊ ＊ ＊ ワッシャー	3	
29	200530	" tube assembly	銅パイプホルダー(組)	1	
30	200152	" " " " screw	＊ ＊ 止ネジ	1	
31	200138	" " " " " washer	＊ ＊ ＊ ワッシャー	2	
32	200521	" draining regulator	排油調節器	1	
33	5051	" " " adjusting screw	＊ 調節ネジ	1	
34	3018	" " " " " " nut	＊ ＊ ナット	1	
35	200136	" distributing tube joint	＊ 継手上雌	1	
36	200141	" " " " " screw	＊ ＊ 上雄	1	
37	200138	" " " " " washer	＊ ＊ ＊ ワッシャー	3	
38	200131	" " " tube	＊ 用ビニールパイプ	1	
39	200155	" " " clamp	＊ ＊ 抱パネ	8	
40	200211	" filler cup	オイルカップ	1	
41	200133	" strainer	油漉金板丸	2	
42	200121	" reservoir (machine base)	オイルパン(組)200118B, 200119x2, 200120トノ組	1	
	200118B	" reservoir, complete with	200118B, 200119x2 & 200120	1	
	200119	" " oil screen filter	＊ 油漉金網	2	
	200120	" " " sight gauge	オイルゲージ	1	
43	5138B	" drain plug screw	オイルパン排油穴蓋ネジ	1	
44	202287A	" " " " " washer	＊ ＊ 座金	1	
45	5132	Arm-bed and oil reservoir screw	＊ 取付ボルト	4	
46	202045	" " " " " washer	＊ ＊ 座金	4	
47	202013	Cushion rubber	クッションゴム	4	
48	5134	" " " screw	＊ 止ネジ	4	



CLOTH PLATE & MISCELLANEOUS COVERS

カバー・外装関係(1)

Ref. No. 参照番号	Parts No. 部品番号	Name	名称	Qt. 数量	Remarks 備考
1	200156	Cloth plate, complete with	大カバー(組)200157, 200158, 1231x8 & 200234	1	
	200157	" plate	* 上	1	
	200158	" " extension	* 下	1	
	1231	" " screw	* 上止ネジ	8	
	200234	" " stop pin	* ストップピン	1	
2	200159A	" " hinge	* ヒンヂ	1	
3	5183	" " " screw	* * 止ネジ	2	
4	200160	" " " pin	* * ピン	1	
5	1892	" " " " screw (upper)	* * * 止ネジ(上)	1	
6	5025	" " " " " (lower)	* * * * (下)	1	
7	200183	" " " " " washer	* * * * ワッシャー	1	
8	200161	" " lock spring	* 止バネ	1	
9	1175-2	" " " " screw	* * 止ネジ	2	
10	200162	" " " " " washer	* * * 座金	1	
11	200163A	" " " " catch	* * 掛金	1	
12	2213	" " " " " screw	* * * 止ネジ	1	
13	200233	" " fabric guard	衣除ケ	1	
14	2921	" " " " (upper)	* 止ネジ(上)	2	
15	5022	" " " " (lower)	* * (下)	2	
16	200213	Presser foot lifting lever cover	後カバー上	1	
17	1170	" " " " " screw	* 止ネジ	2	
18	200214	" " " " " oil shield	* 油除ケ	1	
19	1216	" " " " " " " screw	* * 止ネジ	2	
20	200215	" " " " " clasp	* 止金	1	
21	1216	" " " " " " screw	* * 止ネジ	2	
22	200171	Frame cover (rear), complete with	後カバー下(組)200170, 3044トノ組	1	
	200170	" " " knob	* ツマミ	1	
	3044	" " " " nut	* * ナット	1	
23	200172	" " " lock spring	* 止バネ	1	
24	1175-2	" " " " " screw	* * 止ネジ	2	
25	200162	" " " " " " washer	* * * 座金	1	
26	200168	" " " hinge	* ヒンヂ	1	
27	1216	" " " " screw	* * 止ネジ	2	
28	200169	" " " " pin	* * ピン	1	
29	5023	" " " " " screw	* * * 止ネジ	2	
30	200173	" " " rubber catch	* 当ゴム	1	
31	200174	" " " " " clamp	* * 止金	1	
32	5064	" " " " " " screw	* * * 止ネジ	1	
33	200175	Auxiliary cover	後カバー補助板	1	
34	200176A	Pulley cover	プーリーカバー	1	
35	1175-3	" " screw	* 止ネジ	2	
36	200347	Model plate	型式板	1	DCI-101 only用



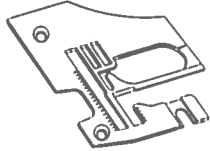
MACHINE FRAME (FRONT) AND MISCELLANEOUS COVERS

カバ-・外装関係(2)

Ref. No. 参照番号	Parts No. 部品番号	Name	名称	Qt. 数量	Remarks 備考
1	200177	Machine frame (front) oil shield	中カバー	1	
2	200212	" " " " " gasket	〃 パッキン	1	
3	1216	" " " " " screw	〃 止ネジ	6	
4	200241	Upper knife drive connection oil shield	〃 油除ケ	1	
5	2921	" " " " " " screw	〃 〃 止ネジ	2	
6	200238	Needle bar drive connection oil shield	大ロットカバー	1	DCP-101, 101W, 103, 105, & 106 only用
7	1175-2	" " " " " " screw(large)	〃 止ネジ(大)	1	
8	137142	" " " " " " " " washer	〃 〃 〃 座金	1	
9	1171	" " " " " " " (small)	〃 〃 (小)	1	
10	200181A	Front cover, complete with 200186 & 200748x2	蝶番カバー(組)200186, 200748x2トノ組	1	
	200186	" " knob	〃 ツマミ	1	
	200748	" " hinge (upper)	〃 ヒンヂ(上)	2	
11	200750	" " " spring	〃 〃 バネ	1	
12	200184	" " " (lower)	〃 〃 (下)	1	
13	1216	" " " " " screw	〃 〃 〃 止ネジ	3	
14	200749	" " " pin	〃 〃 ピン	1	
15	5025	" " " " " screw	〃 〃 〃 止ネジ	2	
16	200187A	" " lock spring	〃 バネ	1	
17	200189	" " extension holder	角台	1	
18	1281	" " " " " screw	〃 止ネジ	1	
19	200190A	" " extension	切屑除ケ	1	
20	1202	" " " " " screw	〃 止ネジ	2	
21	200243A	Frame cover(front)	前カバー(上)	1	
22	5091	" " " " " screw	〃 〃 止ネジ	3	
23	200237	Needle bar drive connection link oil shield	針棒リンク油受	1	
24	1216	" " " " " " " " screw	〃 止ネジ	2	
25	200193	" " cover	針棒糸道カバー	1	
26	200194	" " " hinge	〃 ヒンヂ	1	
27	200195	" " " " " screw stud	〃 〃 ネジピン	2	
28	2905	" " " " " screw	〃 〃 止ネジ	2	
29	200196	" " " catch	〃 掛金	1	
30	200197	" " " " " nut	〃 〃 ナット	1	
31	200198	" " " " " lock spring	〃 止バネ	1	
32	200199	" " " " " " guide	〃 〃 押金	1	
33	1196	" " " " " " " " screw	〃 〃 〃 止ネジ	2	
34	200200	Right looper drive connection cover	小ロットカバー	1	
35	1326	" " " " " " " " screw	〃 止ネジ	2	
36	200260	Arm-bed & machine base interstice cover	オイルパン隙間カバー	1	
37	200346	Name plate	銘板	1	



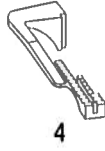
1



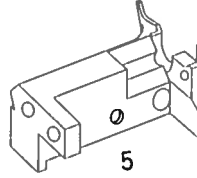
2



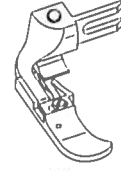
3



4



5



6

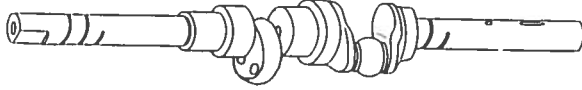


7

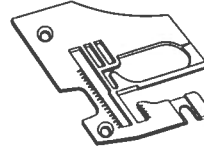
8



9



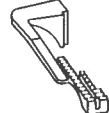
10



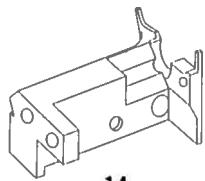
11



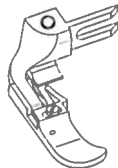
12



13



14



15

17



16



18



19



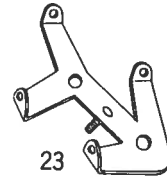
20



21



22

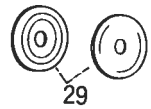


23

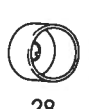
24



31



29



28



27



26



25



32



33

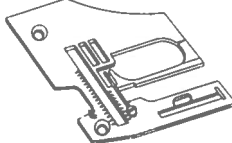


34

35



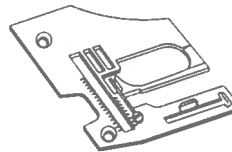
36



37



38



39

PARTS FOR MODEL DCP-101W ONLY

DCP-101W 専用部品

Ref. No. 参照番号	Parts No. 部品番号	Name	名称	Qt. 数量	Remarks 備考
1	200352	Model plate	型式板	1	
2	200245A	Needle plate	針板	1	Also for DCP-103共用
3	200259A	Feed dog	送り歯	1	Also for DCP-103 & 109W共用
4	200323A	Differential feed dog	差動送り歯	1	〃 〃 〃 〃
5	138561	Lower knife carrier	下メス台	1	〃 〃 〃 〃
6	200286	Presser foot (hinged), complete	自由押エ(組)	1	Also for DCP-103共用
7	200271	" " fabric guard	押エ羽根	1	Also for DCP-103 & 109W共用
8	5030	" " " " screw	〃 止ネジ	1	〃 〃 〃 〃

PARTS FOR MODEL DCP-103 ONLY

DCP-103 専用部品

9	200348	Model plate	型式板	1	
10	200338A	Crankshaft, complete	クランクシャフト(組)	1	
11	200245A	Needle plate	針板	1	Also for DCP-101W共用
12	200259A	Feed dog	送り歯	1	Also for DCP-101W & 109W共用
13	200323A	Differential feed dog	差動送り歯	1	〃 〃 〃 〃
14	138561	Lower knife carrier	下メス台	1	〃 〃 〃 〃
15	200286	Presser foot, complete (hinged)	自由押エ(組)	1	Also for DCP-101W共用
16	200271	" " fabric guard	押エ羽根	1	Also for DCP-101W & 109W共用
17	5030	" " " " screw	〃 止ネジ	1	
18	200250	Secondary needle thread tension plate	小調子台	1	For 2-thread machine only用
19	139301	Spreader	大ルーバー	1	〃 〃 〃 〃
20	200285	Presser foot (hinged), complete	自由押エ(組)	1	〃 〃 〃 〃

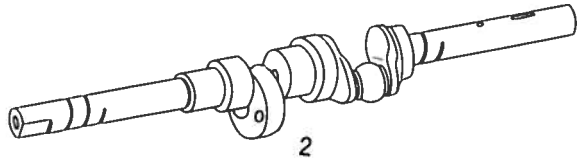
PARTS FOR MODEL DCP-105 ONLY

DCP-105 専用部品

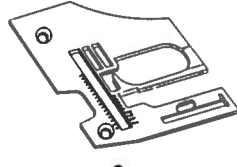
21	200349	Model plate	型式板	1	
22	200255	Needle thread guide	上糸道	1	Also for DCP-109 & 109W共用
23	200216	Primary needle thread tension plate, complete with 200253 & 200254	針糸調子台(組)200253, 200254 トノ組	1	〃 〃 〃 〃
24	3044	" " " " post nut	〃 止ネジナット	1	
	200051	" " " " tension, complete with 201035A, 202278, 201037, 201039, 101111x2 & 5143	針糸調子(組)201035A, 202278, 201037, 201039, 101111x2, 5143 トノ組	2	Also for DCP-109 & 109W 共用
25	201035A	" " " " nut	〃 ナット	2	〃 〃 〃 〃
26	202278	" " " " spring bushing	〃 〃 止パイプ	2	〃 〃 〃 〃
27	201037	" " " " spring (heavy)	〃 バネ(強)	2	〃 〃 〃 〃
28	201039	" " " " " cap	〃 〃 受皿	2	〃 〃 〃 〃
29	101111	" " " " disc	〃 皿	4	〃 〃 〃 〃
30	5143A	" " " " post	〃 棒	2	〃 〃 〃 〃
31	137142	" " " " " washer	〃 〃 座金	2	〃 〃 〃 〃
32	200287	Presser foot (solid), complete with 200266, 200266, 141163 & 1231	固定押エ(組)200266, 141163, 1231 トノ組	1	Also for DCP-109 共用
	141163	" " " " chaining-off finger	押エ爪	1	Also for DCP-109 & 109W 共用
	1231	" " " " " screw	〃 止ネジ	1	
33	200340	Right looper	大ルーバー	1	
34	200277	Needle bar (2.0 mm needle gauge), complete with 200367 & 200369	針棒(組)針巾2.0mm用 200367, 200369 トノ組	1	〃 〃 〃 〃
35	5292	" clamp screw	針止ネジ	2	
36	D C x1	Needle, size No.11	針#11	2	
37	200252	" plate (2.0mm needle gauge)	針板 (針巾2.0mm用)	1	Also for DCP-109共用
38	141122	" bar (1.7 mm needle gauge), complete with 200367 & 200369	針棒(組)(針巾1.7mm用) 200367, 200369 トノ組	1	
39	200251A	" plate (1.7mm needle gauge)	針板(針巾1.7mm用)	1	



1



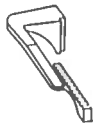
2



3



4



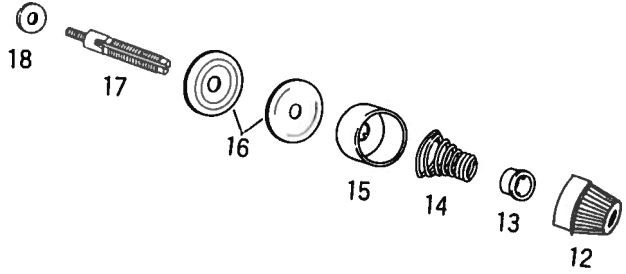
5



6



7



18

17

16

15

14

13

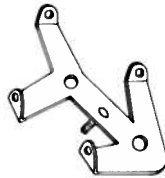
12



8



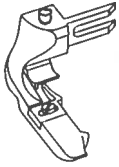
9



10



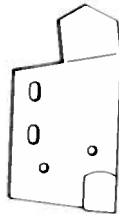
11



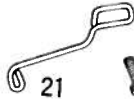
19



20



23



21



22



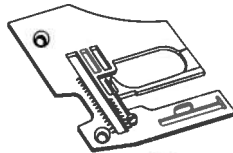
24



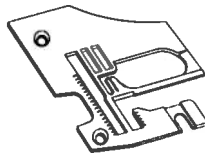
25



26



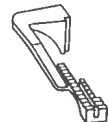
27



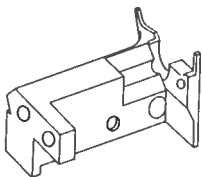
28



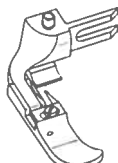
29



30



31



32



34



33

PARTS FOR MODEL DCP-106 ONLY

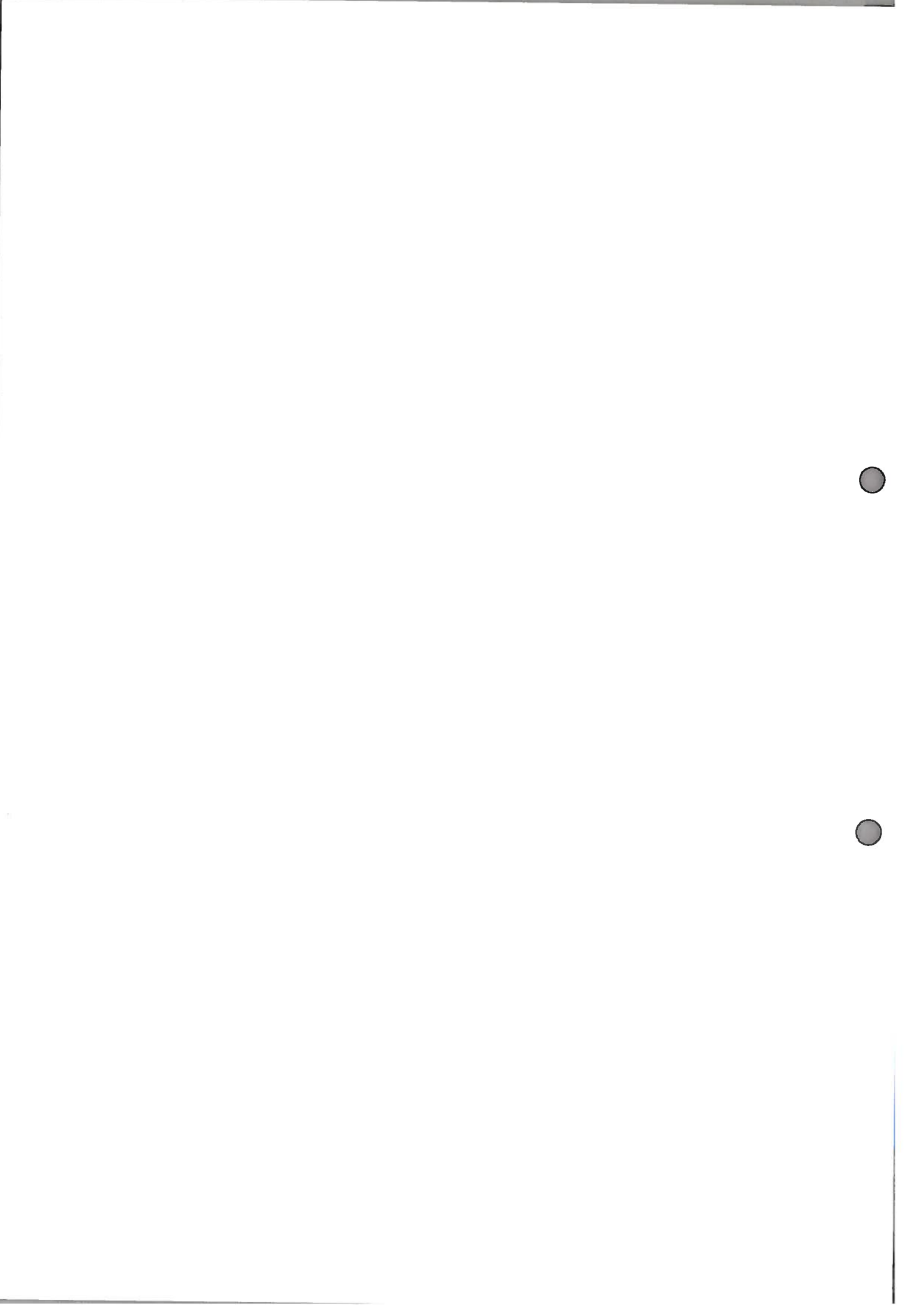
DCP-106 専用部品

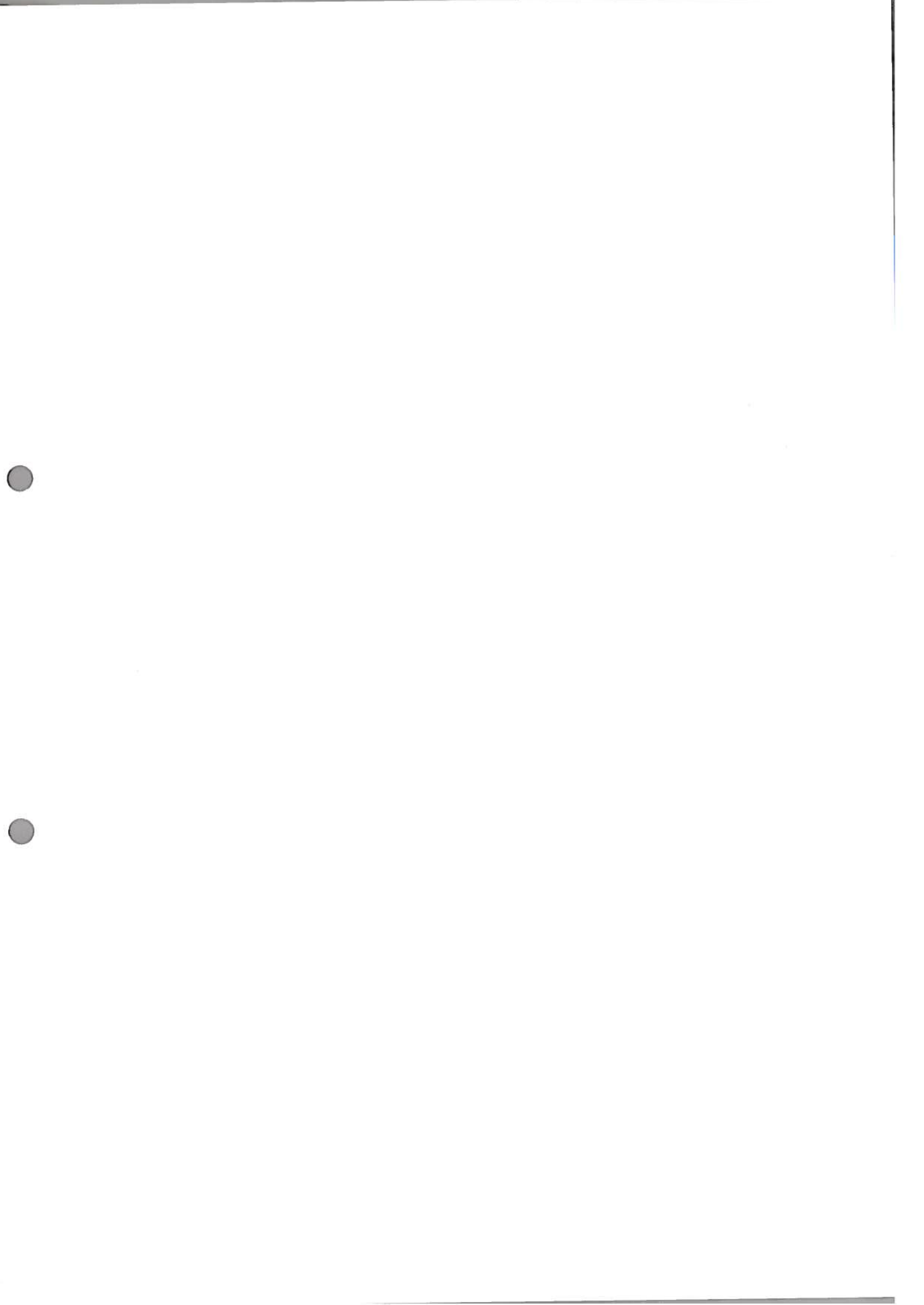
Ref. No. 参照番号	Parts No. 部品番号	Name	名称	Qt. 数量	Remarks 備考
1	200350	Model plate	型式板	1	
2	200339A	Crankshaft, complete	クランクシャフト(組)	1	
3	200269A	Needle plate	針板	1	
4	200259A	Feed dog	送り歯	1	
5	200325A	Differential feed dog	差動送り歯	1	
6	200288	Presser foot (solid), complete with 200266, 142163 & 1231	固定押エ(組)200266, 142163, 1231 トノ組	1	
	142163	" " chaining-off finger	押エ爪	1	
	1231	" " " " screw	止ネジ	1	
7	201086	Primary needle thread tension spring (medium)	針糸調子バネ(中)	1	

PARTS FOR MODEL DCP-109 & 109W ONLY

DCP-109, 109W専用部品

8	200351	Model plate	型式板	1	
9	200255	Needle thread guide	上糸道	1	Also for DCP-105共用
10	200216	Primary needle thread tension plate, complete with 200253 & 200254	針糸調子台(組)200253, 200254トノ組	1	＊ ＊ ＊
11	3044	" " " " " nut	止ネジナット	1	＊ ＊ ＊
	200051	" " " " tension, complete	針糸調子(組)	2	＊ ＊ ＊
12	201035A	" " " " nut	ナット	2	＊ ＊ ＊
13	202278	" " " " spring bushing	止パイプ	2	＊ ＊ ＊
14	201037	" " " " spring (heavy)	バネ(強)	2	＊ ＊ ＊
15	201039	" " " " " cap	受皿	2	＊ ＊ ＊
16	101111	" " " " disc	皿	4	＊ ＊ ＊
17	5143A	" " " " post	棒	2	＊ ＊ ＊
18	137142	" " " " " washer	座金	2	＊ ＊ ＊
19	200287	Presser foot (solid), complete with 200266, 141163 & 1231	固定押エ(組)200266, 141163, 1231 トノ組	1	＊ ＊ ＊
	141163	" " chaining-off finger	押エ爪	1	＊ ＊ ＊
	1231	" " " " screw	止ネジ	1	＊ ＊ ＊
20	200278	Right looper	大ルーバー	1	
21	200273	Auxiliary right looper thread guide	補助糸道	1	
22	1202	" " " " " screw	止ネジ	1	
23	200337	Needle bar drive connection oil shield	大ロッドカバー	1	
24	200277	" bar, complete with 200367 & 200369	針棒(組)200367, 200369トノ組	1	Also for DCP-105 共用
25	5292	" clamp screw	針止ネジ	2	
26	DC x1	Needle, size No.11	針#11	2	
27	200252A	" plate	針板	1	Also for DCP-105 共用
28	200336A	" plate	針板	1	DCP-109W only用
29	200259A	Feed dog	送り歯	1	DCP-101W, 103 & 109W only用
30	200323A	Differential feed dog	差動送り歯	1	＊ ＊ ＊ ＊ ＊
31	138561	Lower knife carrier	下メス台	1	＊ ＊ ＊ ＊ ＊
32	200289	Presser foot (hinged), complete with 200290, 141163 & 1231	自由押エ(組)200290, 141163, 1231 トノ組	1	DCP-109W only用
33	200271	" " fabric guard	押エ羽根	1	DCP-101W, 103 & 109W only用
34	5030	" " " " screw	止ネジ	1	





NUMERICAL INDEX OF PARTS

部 品 番 号 索 引

Parts No.	Page	Ref. No.	Parts No.	Page	Ref. No.	Parts No.	Page	Ref. No.	Parts No.	Page	Ref. No.
部品番号	頁	参照番号	部品番号	頁	参照番号	部品番号	頁	参照番号	部品番号	頁	参照番号
121	25	22	1158	5	11	5025	19	15	137409	9	15
126	25	21	1458	7	42	5026	3	4	137419	9	4
127	25	10	1459	13	(17)	5027	11	11	137552	11	6
128	25	11	1732	5	34	5029	7	37	137553	11	8
130A-5	25	17	1817-2A	5	44	5030	21	8	137554	11	10
130A-6	25	16	1817-2A	7	32	5030	21	17	137558	11	18
130A-7	25	15	1817-2A	7	64	5030	23	34	137560	11	17
130A-9	525	14	1892	7	47	5051	3	24	137561	11	20
131	25	13	1892	17	5	5051	15	33	137561-1	11	25
132	25	19	1936	3	(1)	5052	3	23	137562	11	26
133	25	20	2022	5	13	5053	7	56	137562	25	4
135	25	18	2022	7	8	5064	7	11	137563	11	27
179	25	12	2022	7	52	5064	17	32	137564	5	35
1132	11	16	2022	9	16	5065	11	21	137905	25	(1)
1156	7	41	2022-3	3	5	5069	11	28	137906	25	(1)
1156	9	11	2022-3	3	9	5070	11	24	137906	25	(2)
1170	17	17	2022-3	7	6	5091	19	22	137908	25	(1)
1170-1	5	36	2022-3	9	13	5132	15	46	137950	3	(1)
1170-3	5	19	2022-3	15	19	5134	15	49	138555	11	12
1170-3	9	9	2022-4	5	6	5136	9	35	138555-1	11	13
1170-3	9	37	2133-1	5	38	5137	7	44	138556	11	15
1174	9	33	2133-1	11	7	5138B	15	43	138559	11	19
1174	11	2	2193	7	19	5143A	21	30	138559	25	3
1174	19	9	2193	25	(1)	5143A	23	17	138561	21	5
1175-2	5	50	2193	25	(2)	5183	17	3	138561	21	14
1175-2	9	20	2213	13	11	5224	11	14	138561	23	31
1175-2	9	23	2213	13	13	5259	11	9	138905	25	(2)
1175-2	17	9	2213	17	12	5292	21	35	139301	21	19
1175-2	17	24	2213-1	5	2	5292	23	25	141122	21	38
1175-2	19	7	2213-1	7	2	9070-2	5	23	141163	21	(32)
1175-3	3	13	2285	13	14	101111	5	43	141163	23	(19)
1175-3	13	7	2308	9	27	101111	7	31	141163	23	(32)
1175-3	17	35	2371	13	5	101111	7	63	142163	23	(6)
1186	5	21	2430	25	(1)	101111	21	29	167005	11	3
1186	5	30	2902	13	20	101111	23	16	193174	7	57
1196	7	22	2902	15	3	101113	7	29	200003	3	(1)
1196	19	33	2905	19	28	101113	7	61	200015	3	16
1202	7	24	2921	17	14	137016	7	66	200016	3	17
1202	7	27	2921	19	5	137103	7	67	200017	3	18
1202	19	20	3001	9	30	137106	7	34	200018	3	15
1202	23	22	3018	11	4	137114	7	30	200020	3	14
1202	25	(1)	3018	15	34	137115	7	62	200021	3	19
1202	25	(2)	3044	5	46	137121	7	5	200024	3	26
1216	17	19	3044	11	23	137122	5	25	200030	3	25
1216	17	21	3044	13	9	137123	5	27	200033	5	1
1216	17	27	3044	13	16	137130	5	3	200034	5	
1216	19	3	3044	17	(22)	137130	7	3	200037	5	9
1216	19	13	3044	21	24	137142	5	45	200038	5	10
1216	19	24	3044	23	11	137142	7	20	200040	5	20
1222	5	17	3056	7	60	137142	7	33	200041	5	22
1231	13	(17)	3119	5	31	137142	7	45	200042	5	26
1231	13	19	5001	9	5	137142	7	65	200044A	5	33
1231	13	(22)	5002	7	17	137142	9	6	200045	5	49
1231	17	(1)	5002	7	36	137142	13	21	200050	5	
1231	21	(32)	5002	7	54	137142	19	08	200051	21	
1231	23	(6)	5002	9	2	137142	21	31	200051	23	
1231	23	19	5003	9	3	137142	23	18	200053	7	7
1231	23	32	5010	3	21	137142	25	(1)	200054	7	9
1234	5	8	5010	5	4	137142	25	(2)	200055	7	10
1281	19	18	5010	7	4	137142	25	9	200057	7	12
1326	7	58	5012	7	39	137145A	13	10	200057	7	49
1326	19	35	5017	13	8	137147	13	13	200058	7	14
1399	11	(11)	5017	13	15	137163	13	(17)	200059	7	16
1419	9	39	5019	25	8	137163	13	18	200062	7	18
1435	11	22	5020	15	9	137163	13	(22)	200063	7	23
1457	5	28	5020	15	16	137164	13	(17)	200064	7	
1457	7	13	5020	15	20	137165	13	(17)	200065	7	28
1457	7	15	5022	17	15	137166	13	(17)	200070	7	38
1457	7	50	5023	17	29	137301	7	21	200073	7	48
1457-1	7	68	5025	17	6	137302	7	55	200074	7	51

Parts No.	Page	Ref. No.	Parts No.	Page	Ref. No.	Parts No.	Page	Ref. No.	Parts No.	Page	Ref. No.
部品番号	頁	参照番号	部品番号	頁	参照番号	部品番号	頁	参照番号	部品番号	頁	参照番号
200077	7	59	200190A	19	19	200287	21	32	200618	7	1
200078	7		200193	19	25	200287	23	19	200652	5	12
200081	9	32	200194	19	26	200288	23	6	200653	5	14
200082	9	34	200195	19	27	200289	23	32	200654	5	15
200083	9	36	200196	19	29	200290	23	32	200655	5	18
200084	9	38	200197	19	30	200291	3	12	200696	5	29
200085	9		200198	19	31	200292	3	20	200748	19	10
200089	9	12	200199	19	32	200293A	7	43	200749	19	14
200097	9	26	200200	19	34	200294	7	46	200750	19	11
200098	9	28									
200099	9	29	200202B	3	22	200308	9	7	201035A	5	39
200102	11	1	200203-1	5	37	200309	9	8	201035A	21	25
200103	11		200204	5	47	200310A	9		201035A	23	12
200105A	11	5	200205	5	24	200311	9	17	201037	5	41
200106	11		200211	15	40	200312	9	21	201037	21	27
200109	13	1	200212	19	2	200314	9	24	201037	23	14
200110	13	4	200213	17	16	200315A	9	18	201039	5	42
200111	13	6	200214	17	18	200316	9	25	201039	21	28
200112	13	22	200215	17	20	200317A	3	2	201039	23	15
200113	13	22	200216	21	23	200318A	9	22	201086	23	7
200116	13	17	200216	23	10	200319	13	2	201252	7	25
200117	13	12	200219	3	10	200321B	3	2	202013	15	48
200118B	15		200220	3	11	200322	9	10	202014A	25	7
200119	15		200221	3	8	200323A	21	4	202030A	15	25
200120	15		200222	3	3	200323A	21	13	202045	15	47
200121	15	42	200225	7	53	200323A	23	30	202177	5	16
200133	15	41	200226	7	26	200325A	23	5	202278	23	13
200134	15	38	200229A	9	19	200336A	23	28	202278	5	40
200136	15	8	200233	17	13	200331	23	23	202278	21	26
			200234	17	1	200338A	21	10	202286	5	48
200136	15	26	200237	19	23	200339A	23	2	202287A	15	44
200136	15	35	200238	19	6	200340	21	33	202472	15	10
200137	15	7	200241	19	4	200346	19	37	202903	9	14
200137	15	12	200243A	19	21	200347	17	36	202903	15	24
200138	15	13	200245A	21	2	200348	21	9	D C x 1# 9	5	32
200138	15	28	200245A	21	11	200349	21	21	D C x 1# 9 21	36	
200138	15	31	200250	21	18	200350	23	1	D C x 1# 9 25	5	
200138	15	37	200251A	21	39	200351	23	8	D C x 1# 11	5	32
200139	15	14	200252A	21	37	200352	21	1	D C x 1# 11 23	26	
200140	15	22	200252A	23	27	200367	21	34	D C x 1# 11 25	6	
200141	15	27	200253	21	23	200367	21	38			
200141	15	36	200253	23	10	200367	23	24			
200144	15	17	200254	21	23	200369	21	34			
200145	15	18	200254	23	10	200369	21	38			
200152	15	30	200255	21	22	200369	23	24			
200155	15	39	200255	23	9	200373	7	40			
200156	17	1	200259A	21	3	200389	3	7			
200157	17	1	200259A	21	12	200470	25	1			
200158	17	1	200259A	23	4	200471	25	2			
200159A	17	2	200259A	23	29	200497	15				
200160	17	4	200260	19	36	200498	15	4			
200161	17	8	200262	15	11	200499	15	5			
200162	17	10	200265	5	5	200500	15	6			
200162	17	25	200266	13	17	200501	7	35			
200163A	17	11	200266	21	32	200502	9	31			
200168	17	26	200266	23	6	200503	9	1			
200169	17	28	200266	23	19	200505	15	1			
200170	17	22	200267	13	17	200506	15	2			
200171	17	22	200268	13	17	200510	3	1			
200172	17	23	200269A	23	3	200511	3	1			
200173	17	30	200271	21	7	200513	7				
200174	17	31	200271	21	16	200514	9				
200175	17	33	200271	23	33	200515	15	21			
200176A	17	34	200272	25	2	200520	15	15			
200177	19	1	200273	23	21	200522	15	23			
200181A	19	10	200277	21	34	200524	15	32			
200183	17	7	200277	23	24	200530	15	29			
200184	19	12	200278	23	20	200534	5	7			
200186	19	10	200285	21	20	200605	3	2			
200187A	19	16	200286	21	6	200607	3	6			
200189	19	17	200286	21	15	200617	7				



1970年11月印