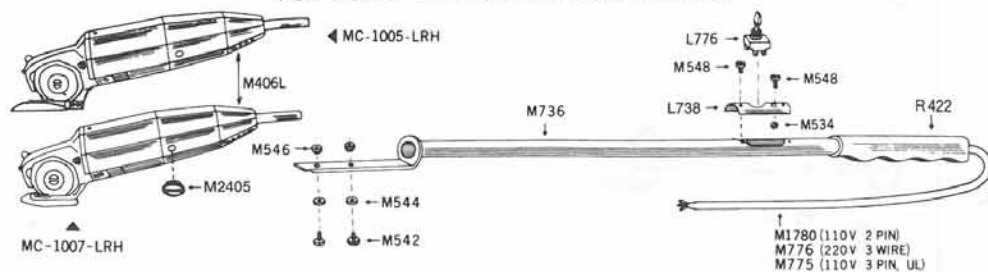


# LONG REACH HANDLE (LRH) MODEL SPECIAL PARTS LISTS

FOR MODEL MC-1005-LRH & MC-1007-LRH

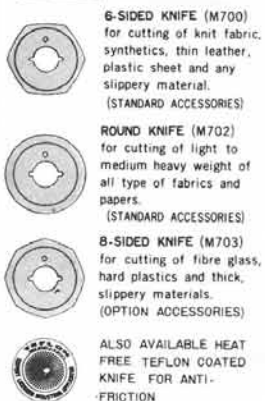


M534.....Nut  
M542.....Fixing Screw  
M544.....Washer  
M546.....Nut  
M548.....Screw

M736.....Long Reach Handle  
L738.....Cover  
M1780.....Cord (110V) 2 pin  
M776.....Cord (220V) 3 wire  
M775.....Cord (110V) 3 pin(UL)

L776.....Switch  
M406L.....Frame(LRH)  
M2405.....Cap for  
Brush replace  
R422.....GRIP

## KNIVES



**6-SIDED KNIFE (M700)**  
for cutting of knit fabric, synthetics, thin leather, plastic sheet and any slippery material.  
(STANDARD ACCESSORIES)

**ROUND KNIFE (M702)**  
for cutting of light to medium heavy weight of all type of fabrics and papers.  
(STANDARD ACCESSORIES)

**8-SIDED KNIFE (M703)**  
for cutting of fibre glass, hard plastics and thick, slippery materials.  
(OPTION ACCESSORIES)

ALSO AVAILABLE HEAT FREE TEFLON COATED KNIFE FOR ANTI-FRICTION

## SYNCHRON SYSTEM BASE

(FOR MC-1005, MC-1005-LRH & HC-1005A)



COMPLETE BASE (M460A)  
— recommendable for general cutting of fabric

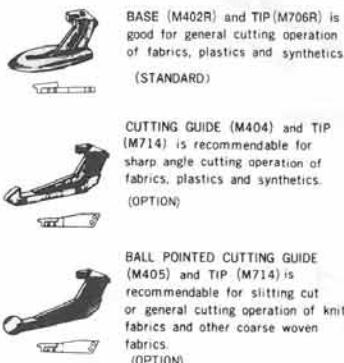
UNSCREW (M548) and by removal of  
BASE PLATE (M426A)

CUTTING FOOT (M424) with COUNTER BLADE assemblies (M550, 728 & 729A)

— Recommendable to apply for cutting of  
① Plastic or synthetics and sharp angle of fabrics  
② Also slitting of knit fabrics and coarse fabrics

## MICRON SYSTEM FEET

(FOR MC-1007, MC-1007-LRH & HC-1007A)



BASE (M402R) and TIP (M706R) is good for general cutting operation of fabrics, plastics and synthetics.  
(STANDARD)

CUTTING GUIDE (M404) and TIP (M714) is recommendable for sharp angle cutting operation of fabrics, plastics and synthetics.  
(OPTION)

BALL POINTED CUTTING GUIDE (M405) and TIP (M714) is recommendable for slitting cut or general cutting operation of knit fabrics and other coarse woven fabrics.  
(OPTION)

## MOTOR SPECIFICATIONS

VOLTAGE	CURRENT	HERTZ	AMPERE
100~110V	A. C.	50/60	0.5/0.6
220~240V	A. C.	50/60	0.25/0.3

Remarks: When ordering, indicate VOLTAGE & HERTZ of your country.

## MAINTENANCE

- To maintain perfect cutting performance, replace the knife when the knife is worn down to about 42mm (1-5/8"). When the cutter is used with a worn knife, the cutting edge will make contact further back on the carbide counter cutting blade—this causes a loss of the scissor action almost all cutting action is lost.
- Operator should use care in operating the cutter without touching the air ventilation holes while using the cutter. Since it will cause the cutter to get excessively hot and may burn out the motor. The ventilation hole should be kept clean of lint or dirt at all times so that air can make the motor cool while in operation.

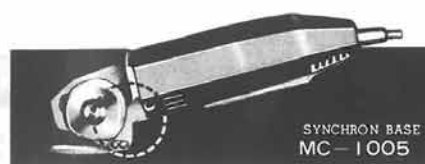
Parts catalog #09.09 1000MDOC

AGENT :

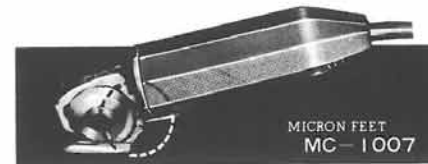
# Suprena® mini CUTTER

SUPRENA  
CUTTING MACHINES

INSTRUCTION MANUALS & PARTS LISTS



SYNCHRON BASE  
MC-1005



MICRON FEET  
MC-1007



SYNCHRON BASE EASYGRIP  
HC-1005A



MICRON FEET EASYGRIP  
HC-1007A

The electric **MINI CUTTER** provides a most powerful and amazingly fastest cutting performance, having many distinguished features; namely, ① Recessed sharp for total visibility, ② Double insulated motor, ③ One-touch sharpener, ④ Carbide stationary counter cutting blade, ⑤ Built-in lubricator, ⑥ Light weight, ⑦ Different type of knives and ⑧ SYNCHRON system (Model MC-1005 & HC-1005A) and MICRON system (Model MC-1007 & HC-1007A) cutting base.

The following are the operating instructions for your CUTTER (all numbers given below refers to parts list on next pages)

### START TO OPERATE:

Connect male plug to the electric power supply outlet of same voltage as shown on name plate. To operate CUTTER, press switch cover (M408Z or M409Z) and to release the switch cover, it will stop operate. The motor is double insulated (requires no grounding), therefore, it is equipped only with a 2-wire electric cord (M764). However upon request, will supply a 3-wire electric cord (M774, M775), to meet your specific electric regulations.

### CUTTING:

Maximum cutting height is 8mm (5/16") depending on type of materials. Lays should not be higher than its height.

### SHARPENING KNIFE:

Lightly press the sharpener push button (M528) just enough for sharpening stone (M688Z) to grind the rotating knife. (Don't press too hard because it will burr the knife.) You should keep knife always sharp for clean and accurate cutting.

### LUBRICATION:

- Felt oiler (M680) behind knife — Requires oil only when cutting plastics or the materials which is apt to adhere to knife.
- Gears (M450 & M452A) — In case CUTTER uses daily, grease gears each week with grease (R672) through bushing located in back of gear housing (M400Z)
- Motor ball bearings (L615) — Grease every 12 months in case CUTTER is in regular use. Remove old grease with cleaning fluid.

### CHANGE KNIFE:

Insert 3mm Pin into hole in knife. Unscrew knife lock screw (M504) with coin. Tip over CUTTER and push out the knife with finger. Replace the worn knife and also the counter cutting blade (M729A or M706R), if necessary. Lock knife with knife lock screw and reset the oscillating oiler. To obtain clean cutting, requires counter cutting blade set at angle of 10° against to the knife — to brush only the edge of the knife. When knife is worn down to about (42mm) (1-5/8"), it must be replaced.

### CHANGE SHARPENING STONE:

Remove the knife, then loose stepped screw (M508) to take out sharpening mechanism. Remove sharpening stone (M688Z) from stepped shaft (M602) by unscrewing flat head screw (M510) and put in new sharpening stone. Remove compression spring (M620) by unscrewing push button (M528) on stepped shaft. Replace sharpening mechanism into gear housing (M400Z), insert stepped screw through gear housing and into stepped shaft. Then replace compression spring and push button. To clean sharpening stone, simply use cleaning fluid and a brush to keep it clean.

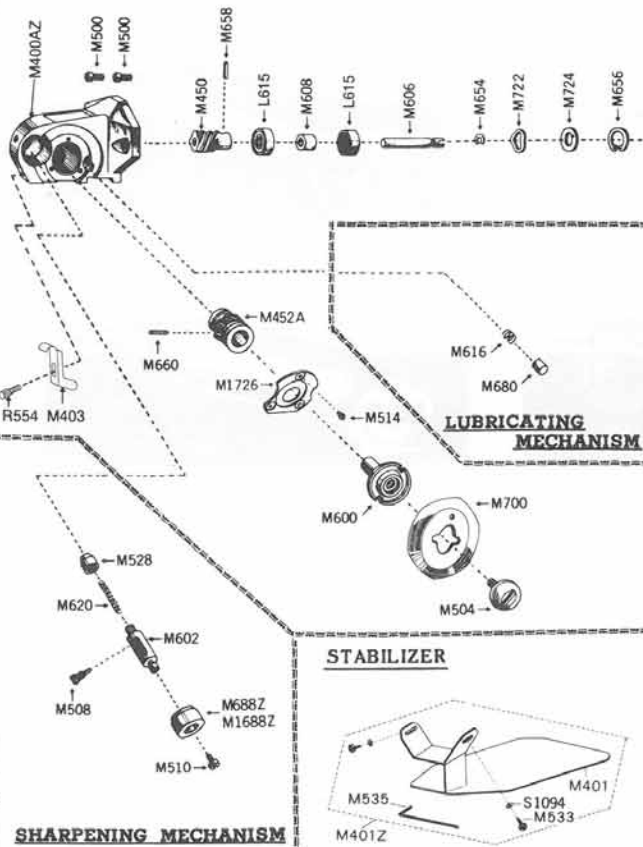
### CHANGE CARBON BRUSHES:

Check carbon brushes (M758Z) every 200 hours of use. Using Screw driver remove the three screws (M502A) from the frame (M406 or M407). Slide off the frame. Then remove the brass screw from the exposed motor and replace the old carbon brushes with new ones.

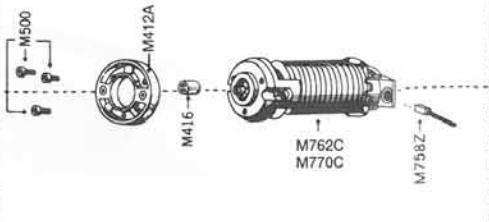
### CUTTING BASE

- For SYNCHRON SYSTEM CUTTING BASE Unscrew (M548) and remove the BASE PLATE (M426A), Then the CUTTING FOOT (M424) with COUNTER BLADE (M550, 728, & 729A) will handle the different type of materials.
- For MICRON SYSTEM CUTTING FEET Remove the base (M402R) by removing flat head screw (M501) that locks the base in place. Pull the base downward and off the pin.

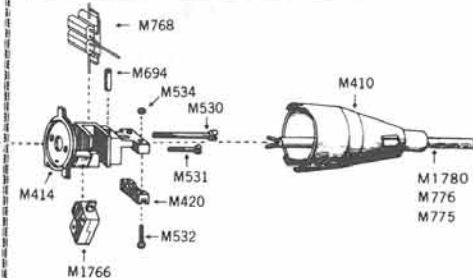
**DRIVING MECHANISM**



**MOTOR PARTS**

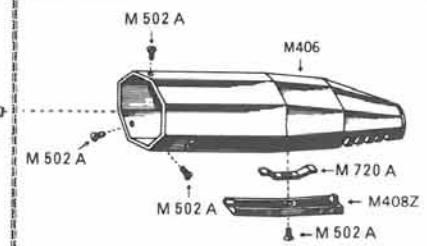


**HOLDER & ITS ACCESSORIES**

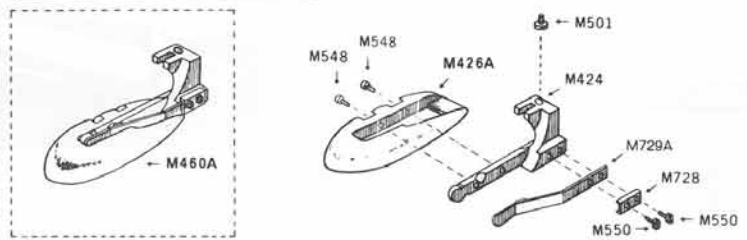


**FRAME & SWITCH**

FOR MODEL MC-1005/1005-LRH & MC-1007/1007-LRH



**SYNCHRON SYSTEM BASE (FOR MC-1005, MC-1005-LRH & HC-1005A)**

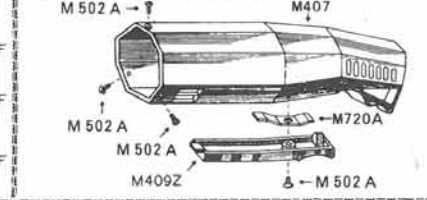


**KNIVES**

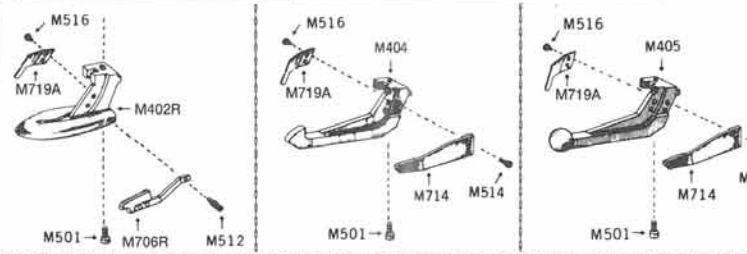


**FRAME & SWITCH**

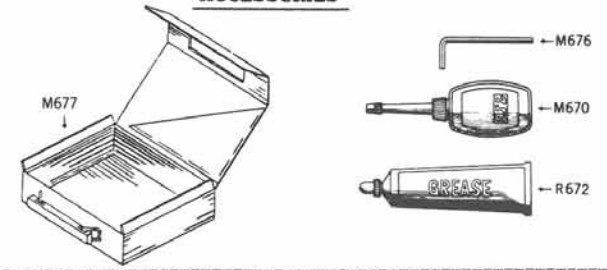
FOR MODEL HC-1005A & HC-1007A



**MICRON SYSTEM FEET (FOR MC-1007, MC-1007-LRH & HC-1007A)**



**ACCESSORIES**



**DRIVING MECHANISM**

- M400AZ ..... Gear Housing
- M450 ..... Worm
- M452A ..... Worm Wheel
- M500 ..... Allen Screw
- M504 ..... Knife Lock Screw
- M514 ..... Fillister Head Screw
- M600 ..... Stepped Shaft
- M606 ..... Shaft
- M608 ..... Spacer
- L615 ..... Ball Bearing
- M654 ..... E Ring
- M656 ..... Snap Ring
- M658 ..... Spring Pin
- M660 ..... Spring Pin
- M700 ..... 6-Sided Knife
- M722 ..... Undulated Washer
- M724 ..... Washer

- M1726 ..... Cover Plate
- M403 ..... Finger Guard
- R554 ..... Knob Screw

**SHARPENING MECHANISM**

- M508 ..... Stepped Screw
- M510 ..... Flat Head Screw
- M528 ..... Push Button
- M602 ..... Stepped Shaft
- M620 ..... Spring
- M688Z ..... Sharpening Stone-Medium (Standard)
- M1688Z ..... Sharpening Stone-Fine (Option)

**LUBRICATING MECHANISM**

- M616 ..... Spring
- M680 ..... Oil Pad

**MOTOR PARTS**

- M412A ..... Insulator

- M416 ..... Coupling
- M500 ..... Allen Screw
- M758Z ..... Carbon Brush Complete
- M762C ..... Motor (110V) Complete
- M758Z-Carbon Brush Complete
- M770C ..... Motor (220V) Complete
- M758Z-Carbon Brush Complete

**SYNCHRON SYSTEM BASE**

(FOR MC-1005, MC-1005-LRH & HC-1005A)

- M460A ..... Complete Base
- M424 ..... Cutting Foot
- M426A ..... Base Plate
- M548 ..... Flat Head Screw
- M550 ..... Flat Head Screw
- M728 ..... Plate
- M729A ..... Counter Blade
- M501 ..... Flat Head Screw

**MICRON SYSTEM FEET**

(FOR MC-1007, MC-1007-LRH & HC-1007A)

- M402R ..... Base
- M404 ..... Cutting Guide
- M405 ..... Ball Pointed Cutting Guide
- M501 ..... Flat Head Screw
- M512 ..... Screw for Base
- M514 ..... Fillister Head Screw
- M516 ..... Truss Head Screw
- M706R ..... Cutting Tip (base)
- M714 ..... Cutting Tip (Guide)
- M719A ..... Spring Plate

**HOLDER & ITS ACCESSORIES**

- M410 ..... Cord Cover
- M414 ..... Holder
- M420 ..... Crip
- M530 ..... Flat Head Screw

- M531 ..... Round Head Screw
- M532 ..... Round Head Screw
- M534 ..... Nut
- M694 ..... Terminal
- M1780 ..... Cord (110V) 2 pin
- M776 ..... Cord (220V) 3 wire
- M775 ..... Cord (110V) 3 pin (UL)
- M1766 ..... Micro Switch
- M768 ..... Condenser

**FRAME & SWITCH**

- M406 ..... Frame (For MC-1005 and 1007)
- M407 ..... Frame (For HC-1005A and 1007A)
- M408Z ..... Switch Cover (For MC-1005 and 1007)
- M409Z ..... Switch Cover (For HC-1005A and 1007A)

- M502A ..... Socket Screw
- M720A ..... Spring Plate

**ACCESSORIES**

- M670 ..... Oiler
- R672 ..... Tube of Grease
- M676 ..... Large Allen Key
- M677 ..... Vinyl Pouch

**KNIVES (Standard)**

- M700 ..... 6-Sided Knife (Mounted with Cutter)
- M702 ..... Round Knife (Included as Accessories)
- M703 ..... 8-Sided Knife (Option as Extra Accessories)

**KNIVES (Heat Free Teflon)**

- M700HF ..... 6-Sided Knife (Option)
- M702HF ..... Round Knife (Option)
- M703HF ..... 8-Sided Knife (Option)

**STABILIZER (Option)**

For MC-1005/1007 & HC-1005A/1007A MC-1005-LRH/1007-LRH

- M401Z ..... Stabilizer Complete
- M401 ..... Stabilizer
- M533 ..... Allen Screw
- S1094 ..... Washer
- M535 ..... Allen Key